

Anti-Rab3C Antibody
Catalog # ABO11588**Specification**

Anti-Rab3C Antibody - Product Information

Application	WB
Primary Accession	Q96E17
Host	Rabbit
Reactivity	Human, Mouse, Rat
Clonality	Polyclonal
Format	Lyophilized

Description

Rabbit IgG polyclonal antibody for Ras-related protein Rab-3C(RAB3C) detection. Tested with WB in Human;Mouse;Rat.

Reconstitution

Add 0.2ml of distilled water will yield a concentration of 500ug/ml.

Anti-Rab3C Antibody - Additional Information

Gene ID 115827

Other Names

Ras-related protein Rab-3C, RAB3C

Calculated MW

25952 MW KDa

Application Details

Western blot, 0.1-0.5 µg/ml, Human, Rat, Mouse

Subcellular Localization

Cell membrane ; Lipid-anchor ; Cytoplasmic side .

Tissue Specificity

Expressed in brain, placenta and lung. .

Protein Name

Ras-related protein Rab-3C

Contents

Each vial contains 5mg BSA, 0.9mg NaCl, 0.2mg Na₂HPO₄, 0.05mg Thimerosal, 0.05mg NaN₃.

Immunogen

A synthetic peptide corresponding to a sequence at the C-terminus of human Rab3C(204-217aa AITAAKQNTRLKET), different from the related mouse and rat sequences by one amino acid.

Purification

Immunogen affinity purified.

Cross Reactivity

No cross reactivity with other proteins

Storage

At -20°C for one year. After r°Constitution, at 4°C for one month. It°Can also be aliquotted and stored frozen at -20°C for a longer time.Avoid repeated freezing and thawing.

Anti-Rab3C Antibody - Protein Information

Name RAB3C

Function

Protein transport. Probably involved in vesicular traffic (By similarity).

Cellular Location

Cell membrane; Lipid-anchor; Cytoplasmic side

Tissue Location

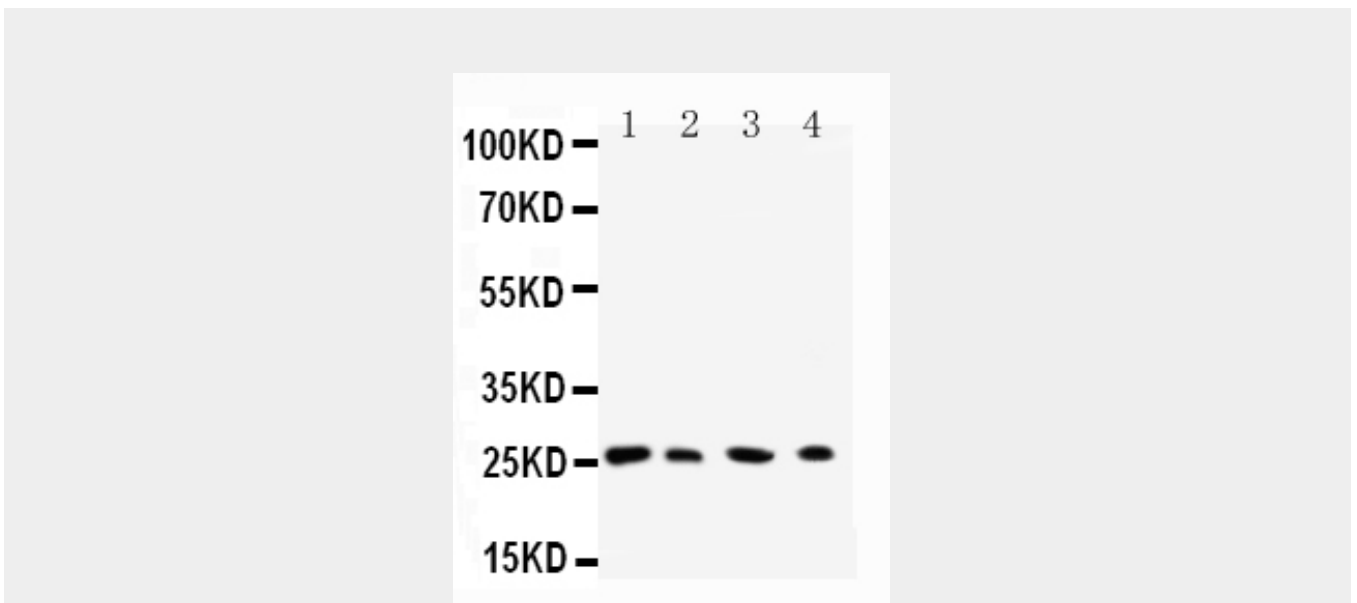
Expressed in brain, placenta and lung.

Anti-Rab3C Antibody - Protocols

Provided below are standard protocols that you may find useful for product applications.

- [Western Blot](#)
- [Blocking Peptides](#)
- [Dot Blot](#)
- [Immunohistochemistry](#)
- [Immunofluorescence](#)
- [Immunoprecipitation](#)
- [Flow Cytometry](#)
- [Cell Culture](#)

Anti-Rab3C Antibody - Images



Anti-Rab3C antibody, ABO11588, All Western blotting
All lanes: Anti-RAB3C(ABO11588) at 0.5ug/ml
Lane 1: Rat Brain Tissue Lysate at 40ug
Lane 2: HELA Whole Cell Lysate at 40ug
Lane 3: 293T Whole Cell Lysate at 40ug
Lane 4: COLO320 Whole Cell Lysate at 40ug
Predicted bind size: 26KD
Observed bind size: 26KD

Anti-Rab3C Antibody - Background

Ras-related protein Rab-3C is a protein that in humans is encoded by the RAB3C gene. It is mapped to 5q11.2. RAB3C is found in brain, adrenal gland and pituitary. This gene is one of the small GTPases implicated in the regulation of vesicular trafficking between membrane compartments. RAB3C gene contains 6 exons and spans more than 310 kb. The function of this gene is transporting protein, and probably involved in vesicular traffic. RAB3C can interact with RIMS2, RPH3A and RPH3AL.