

Anti-MMP24 Antibody
Catalog # ABO11522

Specification

Anti-MMP24 Antibody - Product Information

Application	WB
Primary Accession	Q9Y5R2
Host	Rabbit
Reactivity	Human, Mouse, Rat
Clonality	Polyclonal
Format	Lyophilized

Description

Rabbit IgG polyclonal antibody for Matrix metalloproteinase-24(MMP24) detection. Tested with WB in Human;Mouse;Rat.

Reconstitution

Add 0.2ml of distilled water will yield a concentration of 500ug/ml.

Anti-MMP24 Antibody - Additional Information

Gene ID 10893

Other Names

Matrix metalloproteinase-24, MMP-24, 3.4.24.-, Membrane-type matrix metalloproteinase 5, MT-MMP 5, MTMMP5, Membrane-type-5 matrix metalloproteinase, MT5-MMP, MT5MMP, Processed matrix metalloproteinase-24, MMP24, MT5MMP

Calculated MW

73231 MW KDa

Application Details

Western blot, 0.1-0.5 µg/ml, Human, Mouse, Rat

Subcellular Localization

Matrix metalloproteinase-24: Cell membrane ; Single-pass type I membrane protein . Golgi apparatus, trans-Golgi network membrane ; Single-pass type I membrane protein . Recycled back to the plasma membrane through the trans-Golgi network via interaction with APBA3. .

Tissue Specificity

Predominantly expressed in brain, kidney, pancreas and lung. Overexpressed in a series of brain tumors, including astrocytomas and glioblastomas. .

Protein Name

Matrix metalloproteinase-24

Contents

Each vial contains 5mg BSA, 0.9mg NaCl, 0.2mg Na₂HPO₄, 0.05mg Thimerosal, 0.05mg NaN₃.

Immunogen

A synthetic peptide corresponding to a sequence at the N-terminus of human MMP24(208-225aa YHEIKSDRKEADIMIFFA), identical to the related mouse and rat sequences.

Purification

Immunogen affinity purified.

Cross Reactivity

No cross reactivity with other proteins

Storage

At -20°C for one year. After r°Constitution, at 4°C for one month. It°Can also be aliquotted and stored frozen at -20°C for a longer time.Avoid repeated freezing and thawing.

Sequence Similarities

Belongs to the peptidase M10A family.

Anti-MMP24 Antibody - Protein Information

Name MMP24

Synonyms MT5MMP

Function

Metalloprotease that mediates cleavage of N-cadherin (CDH2) and acts as a regulator of neuro-immune interactions and neural stem cell quiescence. Involved in cell-cell interactions between nociceptive neurites and mast cells, possibly by mediating cleavage of CDH2, thereby acting as a mediator of peripheral thermal nociception and inflammatory hyperalgesia. Key regulator of neural stem cells quiescence by mediating cleavage of CDH2, affecting CDH2-mediated anchorage of neural stem cells to ependymocytes in the adult subependymal zone, leading to modulate their quiescence. May play a role in axonal growth. Able to activate progelatinase A. May also be a proteoglycanase involved in degradation of proteoglycans, such as dermatan sulfate and chondroitin sulfate proteoglycans. Cleaves partially fibronectin, but not collagen type I, nor laminin (By similarity).

Cellular Location

[Matrix metalloproteinase-24]: Cell membrane; Single-pass type I membrane protein. Golgi apparatus, trans-Golgi network membrane; Single-pass type I membrane protein. Note=Recycled back to the plasma membrane through the trans-Golgi network via interaction with APBA3

Tissue Location

Predominantly expressed in brain, kidney, pancreas and lung. Overexpressed in a series of brain tumors, including astrocytomas and glioblastomas.

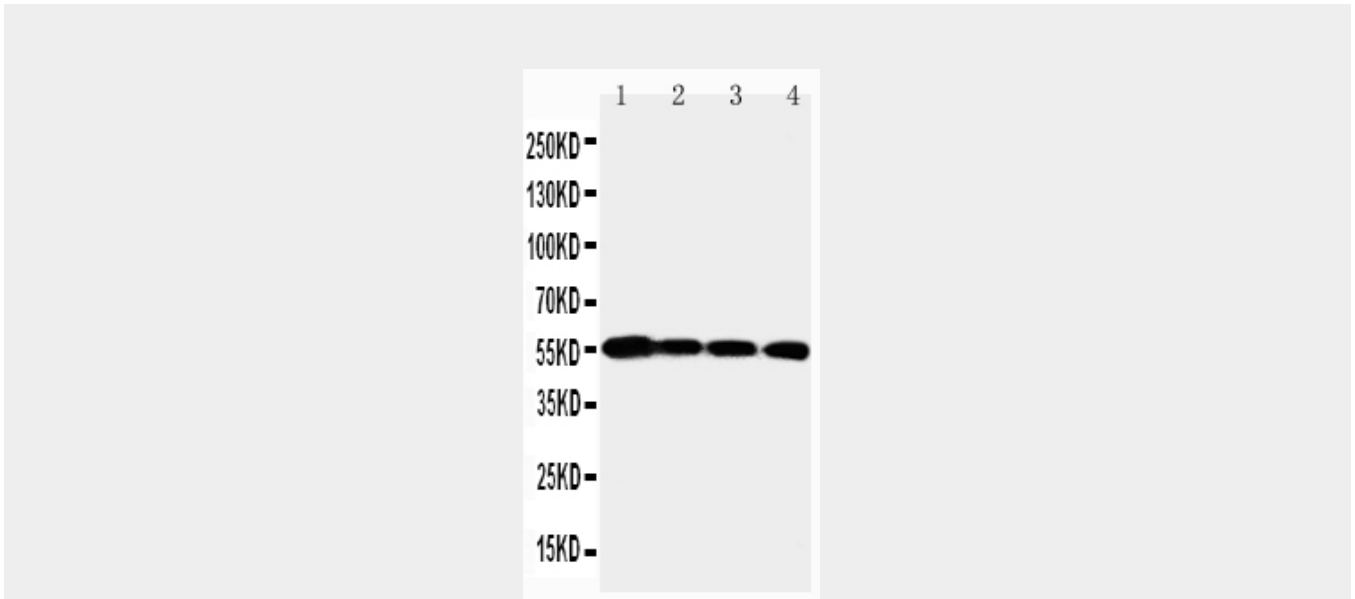
Anti-MMP24 Antibody - Protocols

Provided below are standard protocols that you may find useful for product applications.

- [Western Blot](#)
- [Blocking Peptides](#)
- [Dot Blot](#)
- [Immunohistochemistry](#)
- [Immunofluorescence](#)

- [Immunoprecipitation](#)
- [Flow Cytometry](#)
- [Cell Culture](#)

Anti-MMP24 Antibody - Images



Anti-MMP24 antibody, ABO11522, Western blotting
Lane 1: PANC Cell Lysate
Lane 2: HELA Cell Lysate
Lane 3: SMMC Cell Lysate
Lane 4: A549 Cell Lysate

Anti-MMP24 Antibody - Background

Matrix metalloproteinase-24, also known as MT5MMP or MMP25, is an enzyme that in humans is encoded by the MMP24 gene. Proteins of the matrix metalloproteinase(MMP) family are involved in the breakdown of extracellular matrix in normal physiological processes, such as embryonic development, reproduction, and tissue remodeling, as well as in disease processes, such as arthritis and metastasis. Most MMP's are secreted as inactive proproteins which are activated when cleaved by extracellular proteinases. However, the protein encoded by this gene is a member of the membrane-type MMP(MT-MMP) subfamily; each member of this subfamily contains a potential transmembrane domain suggesting that these proteins are expressed at the cell surface rather than secreted. This protein activates MMP2 by cleavage. The gene has previously been referred to as MMP25 but has been renamed MMP24. This gene may be a proteoglycanase involved in degradation of proteoglycans, such as dermatan sulfate and chondroitin sulfate proteoglycans.