

Anti-KLF4 Antibody
Catalog # ABO11521**Specification**

Anti-KLF4 Antibody - Product Information

Application	WB
Primary Accession	O43474
Host	Rabbit
Reactivity	Human, Mouse, Rat
Clonality	Polyclonal
Format	Lyophilized

Description

Rabbit IgG polyclonal antibody for Krueppel-like factor 4(KLF4) detection. Tested with WB in Human;Mouse;Rat.

Reconstitution

Add 0.2ml of distilled water will yield a concentration of 500ug/ml.

Anti-KLF4 Antibody - Additional Information

Gene ID 9314

Other Names

Krueppel-like factor 4, Epithelial zinc finger protein EZF, Gut-enriched krueppel-like factor, KLF4, EZF, GKLf

Calculated MW

54671 MW KDa

Application Details

Western blot, 0.1-0.5 µg/ml, Human, Mouse, Rat

Subcellular Localization

Nucleus.

Protein Name

Krueppel-like factor 4

Contents

Each vial contains 5mg BSA, 0.9mg NaCl, 0.2mg Na₂HPO₄, 0.05mg Thimerosal, 0.05mg NaN₃.

Immunogen

A synthetic peptide corresponding to a sequence at the N-terminus of human KLF4(93-108aa RRETEEFNDLLDLDLFI), identical to the related mouse and rat sequences.

Purification

Immunogen affinity purified.

Cross Reactivity

No cross reactivity with other proteins

Storage

At -20°C for one year. After r°Constitution, at 4°C for one month. It°Can also be aliquotted and stored frozen at -20°C for a longer time.Avoid repeated freezing and thawing.

Sequence Similarities

Belongs to the krueppel C2H2-type zinc-finger protein family.

Anti-KLF4 Antibody - Protein Information

Name KLF4 ([HGNC:6348](#))

Synonyms EZF, GKLF

Function

Transcription factor; can act both as activator and as repressor. Binds the 5'-CACCC-3' core sequence. Binds to the promoter region of its own gene and can activate its own transcription. Regulates the expression of key transcription factors during embryonic development. Plays an important role in maintaining embryonic stem cells, and in preventing their differentiation. Required for establishing the barrier function of the skin and for postnatal maturation and maintenance of the ocular surface. Involved in the differentiation of epithelial cells and may also function in skeletal and kidney development. Contributes to the down-regulation of p53/TP53 transcription.

Cellular Location

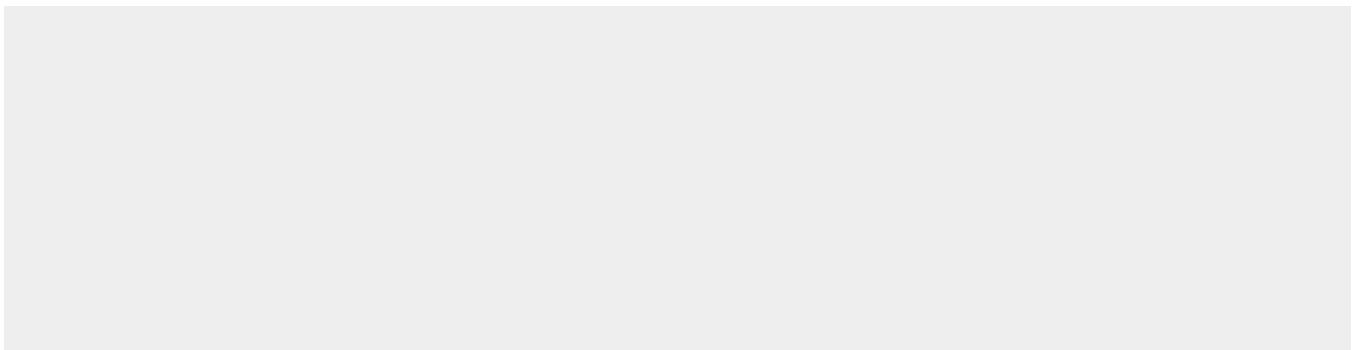
Nucleus {ECO:0000250|UniProtKB:Q60793}. Cytoplasm {ECO:0000250|UniProtKB:Q60793}

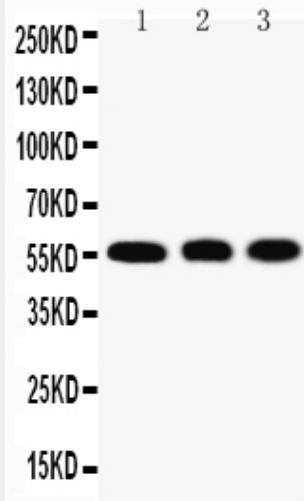
Anti-KLF4 Antibody - Protocols

Provided below are standard protocols that you may find useful for product applications.

- [Western Blot](#)
- [Blocking Peptides](#)
- [Dot Blot](#)
- [Immunohistochemistry](#)
- [Immunofluorescence](#)
- [Immunoprecipitation](#)
- [Flow Cytometry](#)
- [Cell Culture](#)

Anti-KLF4 Antibody - Images





Anti-KLF4 antibody, ABO11521, Western blotting
Lane 1: HELA Cell Lysate
Lane 2: A549 Cell Lysate
Lane 3: U2OS Cell Lysate

Anti-KLF4 Antibody - Background

Kruppel-like factor 4, also known as EZF or GKLF, is a protein that in humans is encoded by the KLF4 gene. This gene is mapped to 9q31.2. KLF4 gene encodes a member of the Kruppel family of transcription factors. This gene plays an important role in maintaining embryonic stem cells, and in preventing their differentiation. It is required for establishing the barrier function of the skin and for postnatal maturation and maintenance of the ocular surface. This gene involved in the differentiation of epithelial cells and may also function in skeletal and kidney development.