

Anti-Cyclophilin B Antibody
Catalog # ABO11462**Specification****Anti-Cyclophilin B Antibody - Product Information**

Application	WB, IHC
Primary Accession	P23284
Host	Rabbit
Reactivity	Human, Mouse, Rat
Clonality	Polyclonal
Format	Lyophilized

Description

Rabbit IgG polyclonal antibody for Peptidyl-prolyl cis-trans isomerase B(PPIB) detection. Tested with WB, IHC-P in Human;Mouse;Rat.

Reconstitution

Add 0.2ml of distilled water will yield a concentration of 500ug/ml.

Anti-Cyclophilin B Antibody - Additional Information

Gene ID 5479

Other Names

Peptidyl-prolyl cis-trans isomerase B, PPIase B, 5.2.1.8, CYP-S1, Cyclophilin B, Rotamase B, S-cyclophilin, SCYLP, PPIB, CYPB

Calculated MW

23743 MW KDa

Application Details

Immunohistochemistry(Paraffin-embedded Section), 0.5-1 µg/ml, Human, Mouse, Rat, By Heat
Western blot, 0.1-0.5 µg/ml, Human, Rat, Mouse

Subcellular Localization

Endoplasmic reticulum lumen. Melanosome. Identified by mass spectrometry in melanosome fractions from stage I to stage IV.

Protein Name

Peptidyl-prolyl cis-trans isomerase B

Contents

Each vial contains 5mg BSA, 0.9mg NaCl, 0.2mg Na₂HPO₄, 0.05mg Thimerosal, 0.05mg NaN₃.

Immunogen

A synthetic peptide corresponding to a sequence at the C-terminus of human Cyclophilin B(176-196aa MEVVRKVESTKTDSRDKPLKD), different from the related mouse sequence by one amino acid, and from the related rat sequence by two amino acids.

Purification

Immunogen affinity purified.

Cross Reactivity

No cross reactivity with other proteins

Storage

At -20°C for one year. After reconstitution, at 4°C for one month. It can also be aliquotted and stored frozen at -20°C for a longer time. Avoid repeated freezing and thawing.

Sequence Similarities

Belongs to the cyclophilin-type PPIase family. PPIase B subfamily.

Anti-Cyclophilin B Antibody - Protein Information

Name PPIB

Synonyms CYPB

Function

PPIase that catalyzes the cis-trans isomerization of proline imidic peptide bonds in oligopeptides and may therefore assist protein folding.

Cellular Location

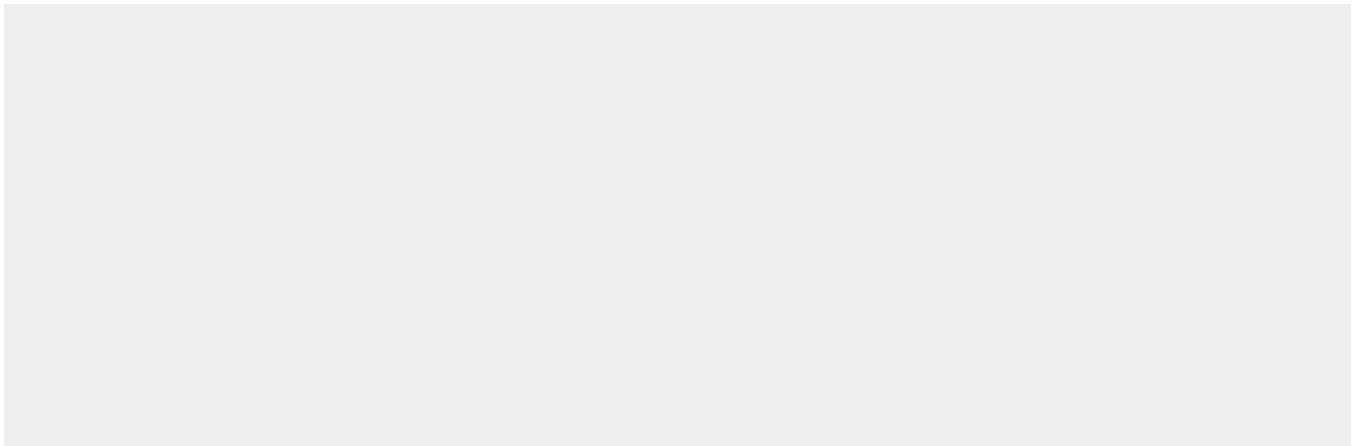
Virion. Note=(Microbial infection)

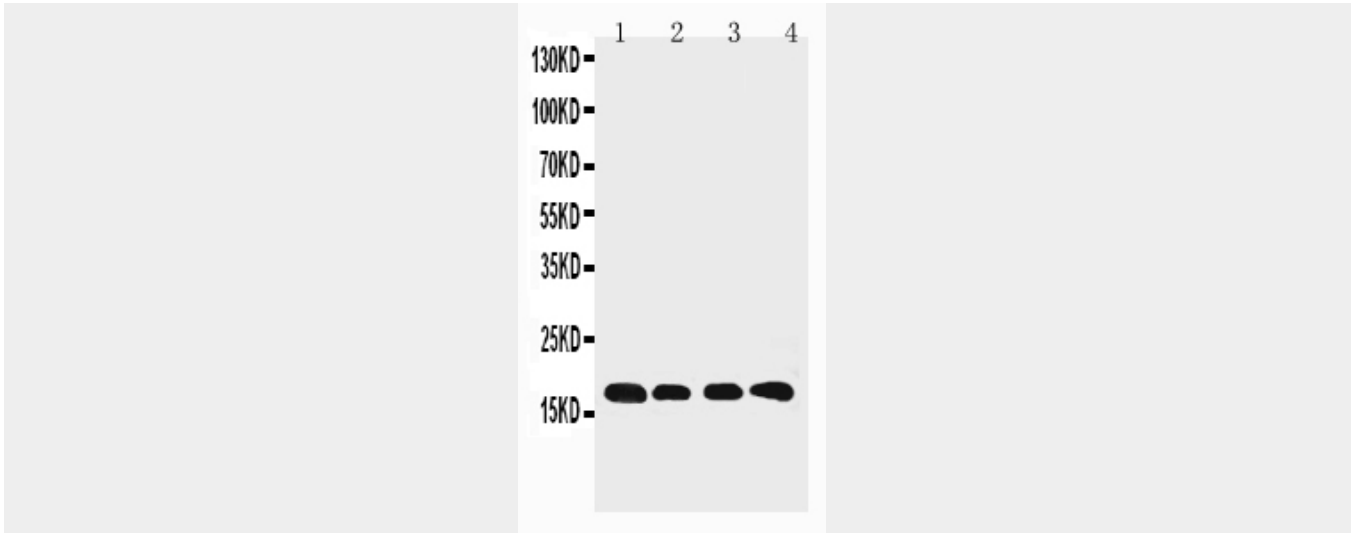
Anti-Cyclophilin B Antibody - Protocols

Provided below are standard protocols that you may find useful for product applications.

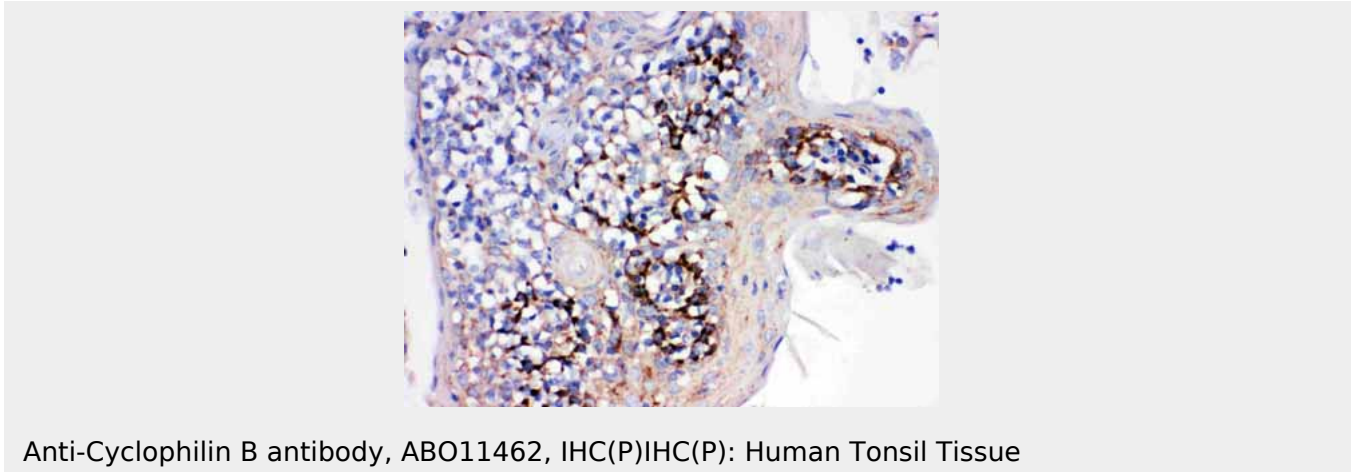
- [Western Blot](#)
- [Blocking Peptides](#)
- [Dot Blot](#)
- [Immunohistochemistry](#)
- [Immunofluorescence](#)
- [Immunoprecipitation](#)
- [Flow Cytometry](#)
- [Cell Culture](#)

Anti-Cyclophilin B Antibody - Images





Anti-Cyclophilin B antibody, ABO11462, Western blotting
Lane 1: Rat Ovary Tissue Lysate
Lane 2: HELA Cell Lysate
Lane 3: 293T Cell Lysate
Lane 4: A431 Cell Lysate



Anti-Cyclophilin B antibody, ABO11462, IHC(P)
IHC(P): Human Tonsil Tissue

Anti-Cyclophilin B Antibody - Background

Peptidyl-prolyl cis-trans isomerase B, also known as CYPB, is an enzyme that in humans is encoded by the PPIB gene. This gene is mapped to 15q22.31. The protein encoded by this gene is a cyclosporine-binding protein and is mainly located within the endoplasmic reticulum. It is associated with the secretory pathway and released in biological fluids. This protein can bind to cells derived from T- and B-lymphocytes, and may regulate cyclosporine A-mediated immunosuppression. Variants have been identified in this protein that give rise to recessive forms of osteogenesis imperfecta.