

Anti-MMP-12 Antibody
Catalog # ABO11456**Specification**

Anti-MMP-12 Antibody - Product Information

Application	WB
Primary Accession	P39900
Host	Rabbit
Reactivity	Human
Clonality	Polyclonal
Format	Lyophilized

Description

Rabbit IgG polyclonal antibody for Macrophage metalloelastase(MMP12) detection. Tested with WB in Human.

Reconstitution

Add 0.2ml of distilled water will yield a concentration of 500ug/ml.

Anti-MMP-12 Antibody - Additional Information

Gene ID 4321

Other Names

Macrophage metalloelastase, MME, 3.4.24.65, Macrophage elastase, ME, hME, Matrix metalloproteinase-12, MMP-12, MMP12, HME

Calculated MW

54002 MW KDa

Application Details

Western blot, 0.1-0.5 µg/ml, Human

Subcellular Localization

Secreted, extracellular space, extracellular matrix .

Tissue Specificity

Found in alveolar macrophages but not in peripheral blood monocytes.

Protein Name

Macrophage metalloelastase

Contents

Each vial contains 5mg BSA, 0.9mg NaCl, 0.2mg Na₂HPO₄, 0.05mg Thimerosal, 0.05mg NaN₃.

Immunogen

A synthetic peptide corresponding to a sequence at the C-terminus of human MMP12(428-444aa KIDAVFYSKNKYYYYFFQ).

Purification

Immunogen affinity purified.

Cross Reactivity

No cross reactivity with other proteins

Storage

At -20°C for one year. After reconstitution, at 4°C for one month. It can also be aliquotted and stored frozen at -20°C for a longer time. Avoid repeated freezing and thawing.

Sequence Similarities

Belongs to the peptidase M10A family.

Anti-MMP-12 Antibody - Protein Information

Name MMP12

Synonyms HME

Function

May be involved in tissue injury and remodeling. Has significant elastolytic activity. Can accept large and small amino acids at the P1' site, but has a preference for leucine. Aromatic or hydrophobic residues are preferred at the P1 site, with small hydrophobic residues (preferably alanine) occupying P3.

Cellular Location

Secreted, extracellular space, extracellular matrix

Tissue Location

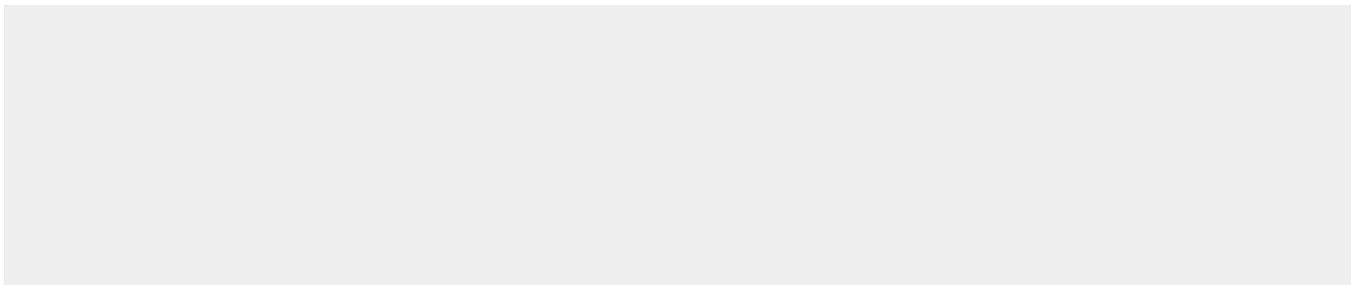
Found in alveolar macrophages but not in peripheral blood monocytes

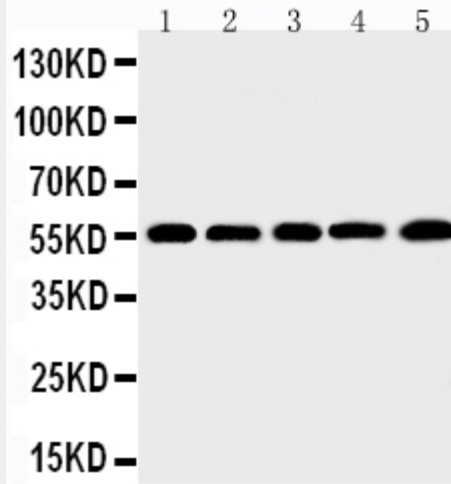
Anti-MMP-12 Antibody - Protocols

Provided below are standard protocols that you may find useful for product applications.

- [Western Blot](#)
- [Blocking Peptides](#)
- [Dot Blot](#)
- [Immunohistochemistry](#)
- [Immunofluorescence](#)
- [Immunoprecipitation](#)
- [Flow Cytometry](#)
- [Cell Culture](#)

Anti-MMP-12 Antibody - Images





Anti-MMP12 antibody, ABO11456, Western blotting
Lane 1: SMMC Cell Lysate
Lane 2: HEPA Cell Lysate
Lane 3: HELA Cell Lysate
Lane 4: K562 Cell Lysate
Lane 5: MCF-7 Cell Lysate

Anti-MMP-12 Antibody - Background

Matrix metalloproteinase-12(MMP12), also known as MME or ME, is an enzyme that in humans is encoded by the MMP12 gene. The gene is part of a cluster of MMP genes which localize to chromosome 11q22.2. It is thought that the protein encoded by this gene is cleaved at both ends to yield the active enzyme, but this processing has not been fully described. The enzyme degrades soluble and insoluble elastin. It may play a role in aneurysm formation and studies in mice suggest a role in the development of emphysema. This gene may be involved in tissue injury and remodeling.