

**Anti-Cdc37 Antibody**  
Catalog # ABO11449

**Specification**

---

**Anti-Cdc37 Antibody - Product Information**

Application	<b>WB</b>
Primary Accession	<a href="#">Q16543</a>
Host	<b>Rabbit</b>
Reactivity	<b>Human</b>
Clonality	<b>Polyclonal</b>
Format	<b>Lyophilized</b>

**Description**

Rabbit IgG polyclonal antibody for Hsp90 co-chaperone Cdc37(CDC37) detection. Tested with WB in Human.

**Reconstitution**

Add 0.2ml of distilled water will yield a concentration of 500ug/ml.

**Anti-Cdc37 Antibody - Additional Information**

**Gene ID** 11140

**Other Names**

Hsp90 co-chaperone Cdc37, Hsp90 chaperone protein kinase-targeting subunit, p50Cdc37, Hsp90 co-chaperone Cdc37, N-terminally processed, CDC37, CDC37A

**Calculated MW**

44468 MW KDa

**Application Details**

Western blot, 0.1-0.5 µg/ml, Human<br>

**Subcellular Localization**

Cytoplasm .

**Protein Name**

Hsp90 co-chaperone Cdc37

**Contents**

Each vial contains 5mg BSA, 0.9mg NaCl, 0.2mg Na<sub>2</sub>HPO<sub>4</sub>, 0.05mg Thimerosal, 0.05mg NaN<sub>3</sub>.

**Immunogen**

A synthetic peptide corresponding to a sequence at the C-terminus of human Cdc37(361-376aa DPLLEAVPKTGDEKDV), different from the related mouse sequence by two amino acids, and from the related rat sequence by three amino acids.

**Purification**

Immunogen affinity purified.

### Cross Reactivity

No cross reactivity with other proteins

### Storage

At -20°C for one year. After reconstitution, at 4°C for one month. It can also be aliquotted and stored frozen at -20°C for a longer time. Avoid repeated freezing and thawing.

### Sequence Similarities

Belongs to the CDC37 family.

## Anti-Cdc37 Antibody - Protein Information

**Name** CDC37

**Synonyms** CDC37A

### Function

Co-chaperone that binds to numerous kinases and promotes their interaction with the Hsp90 complex, resulting in stabilization and promotion of their activity (PubMed:<a href="http://www.uniprot.org/citations/8666233" target="\_blank">8666233</a>). Inhibits HSP90AA1 ATPase activity (PubMed:<a href="http://www.uniprot.org/citations/23569206" target="\_blank">23569206</a>).

### Cellular Location

Cytoplasm.

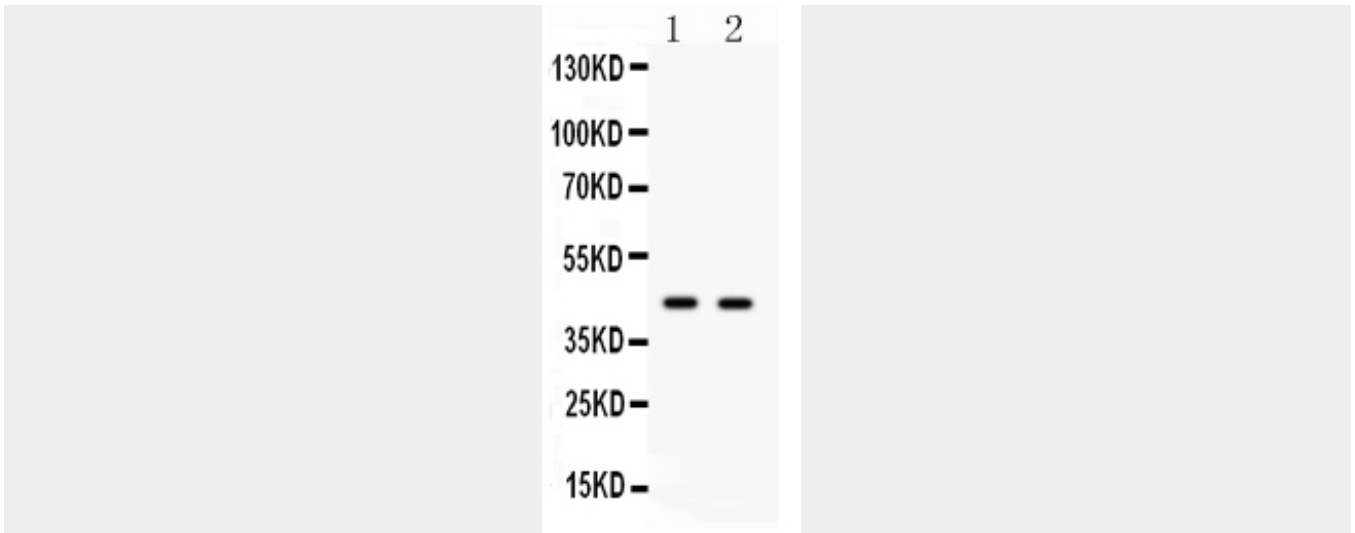
## Anti-Cdc37 Antibody - Protocols

Provided below are standard protocols that you may find useful for product applications.

- [Western Blot](#)
- [Blocking Peptides](#)
- [Dot Blot](#)
- [Immunohistochemistry](#)
- [Immunofluorescence](#)
- [Immunoprecipitation](#)
- [Flow Cytometry](#)
- [Cell Culture](#)

## Anti-Cdc37 Antibody - Images





Anti- Cdc37 antibody, ABO11449, Western blotting All lanes: Anti Cdc37(ABO11449) at 0.5ug/ml Lane 1: JURKAT Whole Cell Lysate at 40ug Lane 2: 293T Whole Cell Lysate at 40ug Predicted bind size: 44KD Observed bind size: 44KD

#### **Anti-Cdc37 Antibody - Background**

Hsp90 co-chaperone Cdc37, also called P50CDC37 is a protein that in humans is encoded by the CDC37 gene. The protein encoded by this gene is highly similar to Cdc 37, a cell division cycle control protein of *Sacchomyces cerevisiae*. This gene is mapped to 19p13.2. This protein is a molecular chaperone with specific function in cell signal transduction. It has been shown to form complex with Hsp90 and a variety of protein kinases including CDK4, CDK6, SRC, RAF-1, MOK, as well as eIF2 alpha kinases. It is thought to play a critical role in directing Hsp90 to its target kinases.