

**Anti-CDC5L Antibody**  
Catalog # ABO11429**Specification**

---

**Anti-CDC5L Antibody - Product Information**

Application	<b>WB</b>
Primary Accession	<a href="#">Q99459</a>
Host	<b>Rabbit</b>
Reactivity	<b>Human, Rat</b>
Clonality	<b>Polyclonal</b>
Format	<b>Lyophilized</b>

**Description**

Rabbit IgG polyclonal antibody for Cell division cycle 5-like protein(CDC5L) detection. Tested with WB in Human;Rat.

**Reconstitution**

Add 0.2ml of distilled water will yield a concentration of 500ug/ml.

**Anti-CDC5L Antibody - Additional Information**

**Gene ID** 988

**Other Names**

Cell division cycle 5-like protein, Cdc5-like protein, Pombe cdc5-related protein, CDC5L, KIAA0432, PCDC5RP

**Calculated MW**

92251 MW KDa

**Application Details**

Western blot, 0.1-0.5 µg/ml, Human, Rat<br>

**Subcellular Localization**

Nucleus . Nucleus speckle . Cytoplasm . May shuttle between cytoplasm and nucleus. .

**Tissue Specificity**

Ubiquitously expressed in both fetal and adult tissues. .

**Protein Name**

Cell division cycle 5-like protein

**Contents**

Each vial contains 5mg BSA, 0.9mg NaCl, 0.2mg Na<sub>2</sub>HPO<sub>4</sub>, 0.05mg Thimerosal, 0.05mg NaN<sub>3</sub>.

**Immunogen**

A synthetic peptide corresponding to a sequence at the C-terminus of human CDC5L(782-802aa KELQHRYADLLLEKETLKSFK), different from the related rat and mouse sequences by four amino acids.

**Purification**

Immunogen affinity purified.

**Cross Reactivity**

No cross reactivity with other proteins

**Storage**

**At -20°C for one year. After reconstitution, at 4°C for one month. It can also be aliquotted and stored frozen at -20°C for a longer time. Avoid repeated freezing and thawing.**

**Sequence Similarities**

Belongs to the CEF1 family.

**Anti-CDC5L Antibody - Protein Information**

**Name** CDC5L

**Synonyms** KIAA0432, PCDC5RP

**Function**

DNA-binding protein involved in cell cycle control. May act as a transcription activator. Plays a role in pre-mRNA splicing as core component of precatalytic, catalytic and postcatalytic spliceosomal complexes (PubMed: [11991638](http://www.uniprot.org/citations/11991638) target="\_blank">11991638</a>, PubMed: [20176811](http://www.uniprot.org/citations/20176811) target="\_blank">20176811</a>, PubMed: [28076346](http://www.uniprot.org/citations/28076346) target="\_blank">28076346</a>, PubMed: [28502770](http://www.uniprot.org/citations/28502770) target="\_blank">28502770</a>, PubMed: [29301961](http://www.uniprot.org/citations/29301961) target="\_blank">29301961</a>, PubMed: [29360106](http://www.uniprot.org/citations/29360106) target="\_blank">29360106</a>, PubMed: [29361316](http://www.uniprot.org/citations/29361316) target="\_blank">29361316</a>, PubMed: [30705154](http://www.uniprot.org/citations/30705154) target="\_blank">30705154</a>, PubMed: [30728453](http://www.uniprot.org/citations/30728453) target="\_blank">30728453</a>). Component of the PRP19-CDC5L complex that forms an integral part of the spliceosome and is required for activating pre-mRNA splicing. The PRP19-CDC5L complex may also play a role in the response to DNA damage (DDR) (PubMed: [20176811](http://www.uniprot.org/citations/20176811) target="\_blank">20176811</a>). As a component of the minor spliceosome, involved in the splicing of U12- type introns in pre-mRNAs (Probable).

**Cellular Location**

Nucleus. Nucleus speckle. Cytoplasm Note=May shuttle between cytoplasm and nucleus

**Tissue Location**

Ubiquitously expressed in both fetal and adult tissues.

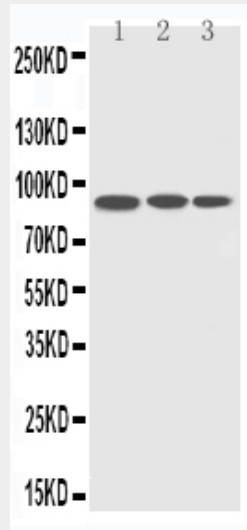
**Anti-CDC5L Antibody - Protocols**

Provided below are standard protocols that you may find useful for product applications.

- [Western Blot](#)
- [Blocking Peptides](#)
- [Dot Blot](#)
- [Immunohistochemistry](#)

- [Immunofluorescence](#)
- [Immunoprecipitation](#)
- [Flow Cytometry](#)
- [Cell Culture](#)

### Anti-CDC5L Antibody - Images



Anti-CDC5L antibody, ABO11429, Western blotting  
Lane 1: HELA Cell Lysate  
Lane 2: RAJI Cell Lysate  
Lane 3: A549 Cell Lysate

### Anti-CDC5L Antibody - Background

Cell division cycle 5-like protein, also called PCDC5RP or CDC5-like, is a protein that in humans is encoded by the CDC5L gene. The CDC5L gene was mapped to chromosome 6p21 by fluorescence in situ hybridization. This DNA-binding protein involved in cell cycle control. It may act as a transcription activator. The Component of the PRP19-CDC5L complex forms an integral part of the spliceosome and is required for activating pre-mRNA splicing. The role of CDC5(Polo-like kinase) in regulating Rho1 is likely to be relevant to cytokinesis and asymmetric cell division in other organisms.