

Anti-CCR9 Antibody
Catalog # ABO11428

Specification

Anti-CCR9 Antibody - Product Information

Application	WB
Primary Accession	P51686
Host	Rabbit
Reactivity	Human
Clonality	Polyclonal
Format	Lyophilized

Description

Rabbit IgG polyclonal antibody for C-C chemokine receptor type 9(CCR9) detection. Tested with WB in Human.

Reconstitution

Add 0.2ml of distilled water will yield a concentration of 500ug/ml.

Anti-CCR9 Antibody - Additional Information

Gene ID 10803

Other Names

C-C chemokine receptor type 9, C-C CKR-9, CC-CKR-9, CCR-9, G-protein coupled receptor 28, GPR-9-6, CDw199, CCR9, GPR28

Calculated MW

42016 MW KDa

Application Details

Western blot, 0.1-0.5 µg/ml, Human

Subcellular Localization

Cell membrane; Multi-pass membrane protein.

Tissue Specificity

Highly expressed in the thymus and low in lymph nodes and spleen. .

Protein Name

C-C chemokine receptor type 9

Contents

Each vial contains 5mg BSA, 0.9mg NaCl, 0.2mg Na₂HPO₄, 0.05mg Thimerosal, 0.05mg NaN₃.

Immunogen

A synthetic peptide corresponding to a sequence at the N-terminus of human CCR9(1-17aa MPTDFTSPIPMADDY).

Purification

Immunogen affinity purified.

Cross Reactivity

No cross reactivity with other proteins

Storage

At -20°C for one year. After reconstitution, at 4°C for one month. It can also be aliquotted and stored frozen at -20°C for a longer time. Avoid repeated freezing and thawing.

Sequence Similarities

Belongs to the G-protein coupled receptor 1 family.

Anti-CCR9 Antibody - Protein Information

Name CCR9

Synonyms GPR28

Function

Receptor for chemokine SCYA25/TECK. Subsequently transduces a signal by increasing the intracellular calcium ions level.

Cellular Location

Cell membrane; Multi-pass membrane protein

Tissue Location

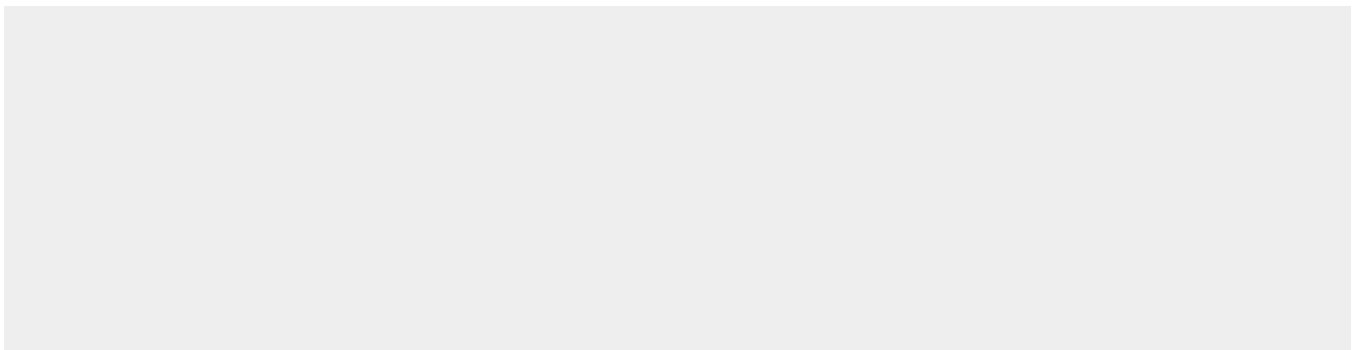
Highly expressed in the thymus and low in lymph nodes and spleen.

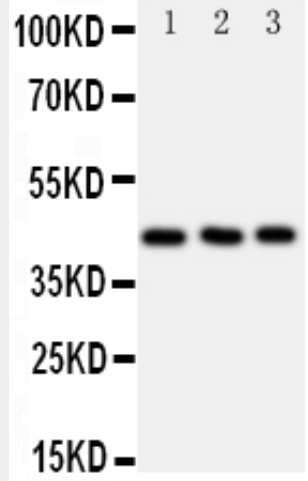
Anti-CCR9 Antibody - Protocols

Provided below are standard protocols that you may find useful for product applications.

- [Western Blot](#)
- [Blocking Peptides](#)
- [Dot Blot](#)
- [Immunohistochemistry](#)
- [Immunofluorescence](#)
- [Immunoprecipitation](#)
- [Flow Cytometry](#)
- [Cell Culture](#)

Anti-CCR9 Antibody - Images





Anti-CCR9 antibody, ABO11428, Western blotting All lanes: Anti CCR9 (ABO11428) at 0.5ug/ml Lane 1: JURKAT Whole Cell Lysate at 40ug Lane 2: HELA Whole Cell Lysate at 40ug Lane 3: SMMC Whole Cell Lysate at 40ug Predicted bind size: 42KD Observed bind size: 42KD

Anti-CCR9 Antibody - Background

C-C chemokine receptor type 9, also called GPR-9-6 or CDw199, is a protein that in humans is encoded by the CCR9 gene. The protein encoded by this gene is a member of the beta chemokine receptor family. By radiation hybrid analysis and organization of BAC contigs by FISH on combed genomic DNA, the CCR9 gene within the CCR cluster was localized at 3p21.3. It is the receptor for chemokine SCYA25/TECK. This gene subsequently transduces a signal by increasing the intracellular calcium ions level. It is an alternative coreceptor with CD4 for HIV-1 infection. This gene may play a role in the thymocytes recruitment and development that may permit functional specialization of immune responses in different segment of the gastrointestinal tract.