

Anti-Wnt3a Antibody
Catalog # ABO11426**Specification**

Anti-Wnt3a Antibody - Product Information

Application	WB
Primary Accession	P56704
Host	Rabbit
Reactivity	Human, Mouse
Clonality	Polyclonal
Format	Lyophilized

Description

Rabbit IgG polyclonal antibody for Protein Wnt-3a(WNT3A) detection. Tested with WB in Human;Mouse.

Reconstitution

Add 0.2ml of distilled water will yield a concentration of 500ug/ml.

Anti-Wnt3a Antibody - Additional Information

Gene ID 89780

Other Names

Protein Wnt-3a, WNT3A

Calculated MW

39365 MW KDa

Application Details

Western blot, 0.1-0.5 µg/ml, Human, Mouse

Subcellular Localization

Secreted, extracellular space, extracellular matrix.

Tissue Specificity

Moderately expressed in placenta and at low levels in adult lung, spleen, and prostate.

Protein Name

Protein Wnt-3a

Contents

Each vial contains 5mg BSA, 0.9mg NaCl, 0.2mg Na₂HPO₄, 0.05mg Thimerosal, 0.05mg NaN₃.

Immunogen

A synthetic peptide corresponding to a sequence at the C-terminus of human Wnt3a(252-267aa WVETLRPRYTYFKVPT), identical to the related mouse sequence.

Purification

Immunogen affinity purified.

Cross Reactivity

No cross reactivity with other proteins

Storage

At -20°C for one year. After r°Constitution, at 4°C for one month. It°Can also be aliquotted and stored frozen at -20°C for a longer time.Avoid repeated freezing and thawing.

Sequence Similarities

Belongs to the Wnt family.

Anti-Wnt3a Antibody - Protein Information**Name** WNT3A**Function**

Ligand for members of the frizzled family of seven transmembrane receptors (Probable). Functions in the canonical Wnt signaling pathway that results in activation of transcription factors of the TCF/LEF family (PubMed:20093360, PubMed:21244856, PubMed:24841207, PubMed:26902720). Required for normal embryonic mesoderm development and formation of caudal somites. Required for normal morphogenesis of the developing neural tube (By similarity). Mediates self-renewal of the stem cells at the bottom on intestinal crypts (in vitro) (PubMed:26902720).

Cellular Location

Secreted, extracellular space, extracellular matrix {ECO:0000250|UniProtKB:P27467}. Secreted

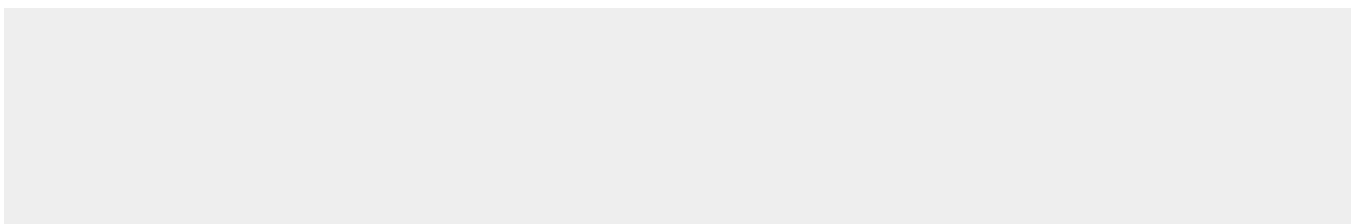
Tissue Location

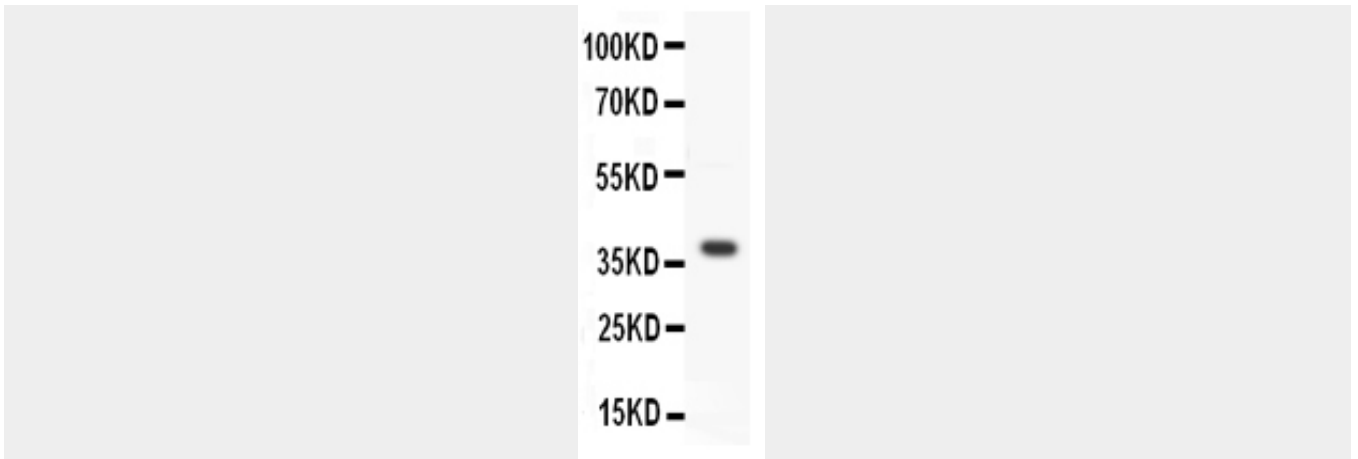
Moderately expressed in placenta and at low levels in adult lung, spleen, and prostate.

Anti-Wnt3a Antibody - Protocols

Provided below are standard protocols that you may find useful for product applications.

- [Western Blot](#)
- [Blocking Peptides](#)
- [Dot Blot](#)
- [Immunohistochemistry](#)
- [Immunofluorescence](#)
- [Immunoprecipitation](#)
- [Flow Cytometry](#)
- [Cell Culture](#)

Anti-Wnt3a Antibody - Images



Anti-WNT3A antibody, ABO11426, Western blotting All lanes: Anti WNT3A (ABO11426) at 0.5ug/ml WB: SMMC Whole Cell Lysate at 40ug Predicted bind size: 39KD Observed bind size: 39KD

Anti-Wnt3a Antibody - Background

Wingless-type MMIV integration site family, member 3A is a protein that in humans is encoded by the WNT3A gene. This gene is a member of the WNT gene family. The gene was assigned to human chromosome 1q42.13. These proteins have been implicated in oncogenesis and in several developmental processes, including regulation of cell fate and patterning during embryogenesis. It encodes a protein showing 96% amino acid identity to mouse Wnt3A protein, and 84% to human WNT3 protein, another WNT gene product.