

Anti-Caspase-12 Antibody
Catalog # ABO11409**Specification**

Anti-Caspase-12 Antibody - Product Information

Application	WB, IHC
Primary Accession	Q6UXS9
Host	Rabbit
Reactivity	Human
Clonality	Polyclonal
Format	Lyophilized

Description

Rabbit IgG polyclonal antibody for Inactive caspase-12(CASP12) detection. Tested with WB, IHC-P in Human.

Reconstitution

Add 0.2ml of distilled water will yield a concentration of 500ug/ml.

Anti-Caspase-12 Antibody - Additional Information

Gene ID 100506742

Other Names

Inactive caspase-12, CASP-12, CASP12

Calculated MW

38865 MW KDa

Application Details

Immunohistochemistry(Paraffin-embedded Section), 0.5-1 µg/ml, Human, By Heat
Western blot, 0.1-0.5 µg/ml, Human

Tissue Specificity

Detected in heart, kidney, liver, lung, pancreas, small intestine, spleen, stomach, thymus and testis. .

Protein Name

Inactive caspase-12

Contents

Each vial contains 5mg BSA, 0.9mg NaCl, 0.2mg Na₂HPO₄, 0.05mg Thimerosal, 0.05mg NaN₃.

Immunogen

A synthetic peptide corresponding to a sequence at the N-terminus of human Caspase-12(71-84aa KIFREHLWNSKKQL).

Purification

Immunogen affinity purified.

Cross Reactivity

No cross reactivity with other proteins

Storage

At -20°C for one year. After reconstitution, at 4°C for one month. It can also be aliquotted and stored frozen at -20°C for a longer time. Avoid repeated freezing and thawing.

Sequence Similarities

Belongs to the peptidase C14A family.

Anti-Caspase-12 Antibody - Protein Information

Name CASP12

Function

May function as a negative regulator of inflammatory responses and innate immunity. May reduce cytokine release in response to bacterial lipopolysaccharide during infection. Reduces activation of NF-kappa-B in response to TNF (PubMed: [15129283](http://www.uniprot.org/citations/15129283)). May lack protease activity (Probable).

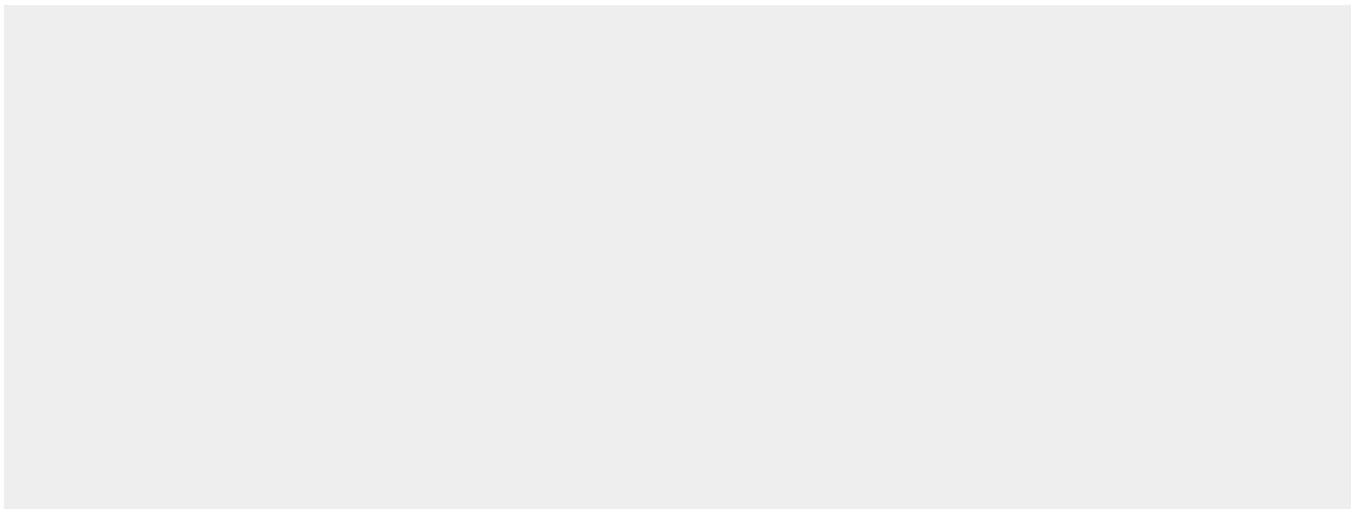
Tissue Location

Widely expressed, with highest levels in lung.

Anti-Caspase-12 Antibody - Protocols

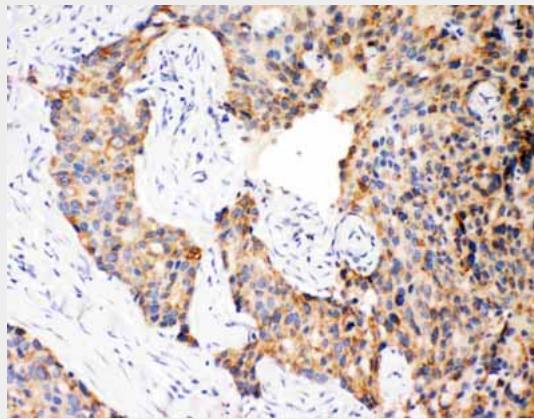
Provided below are standard protocols that you may find useful for product applications.

- [Western Blot](#)
- [Blocking Peptides](#)
- [Dot Blot](#)
- [Immunohistochemistry](#)
- [Immunofluorescence](#)
- [Immunoprecipitation](#)
- [Flow Cytometry](#)
- [Cell Culture](#)

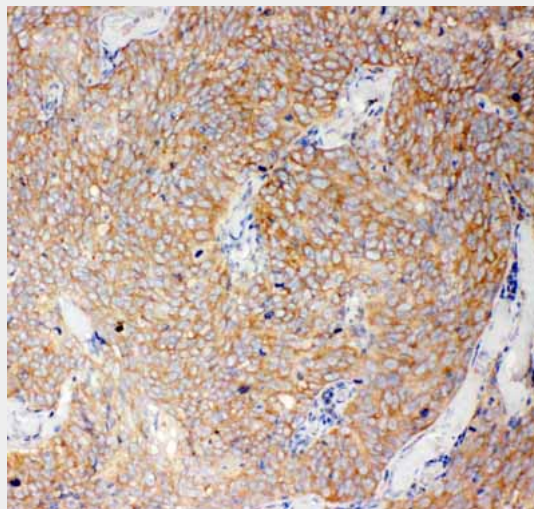
Anti-Caspase-12 Antibody - Images



Anti-Caspase-12 antibody, ABO11409, Western blotting All lanes: Anti Caspase-12 (ABO11409) at 0.5ug/ml
Lane 1: PANC Whole Cell Lysate at 40ug
Lane 2: SMMC Whole Cell Lysate at 40ug
Lane 3: A549 Whole Cell Lysate at 40ug
Lane 4: HELA Whole Cell Lysate at 40ug
Predicted bind size: 39KD
Observed bind size: 39KD



Anti-Caspase-12 antibody, ABO11409, IHC(P) IHC(P): Human Mammary Cancer Tissue



Anti-Caspase-12 antibody, ABO11409, IHC(P) IHC(P): Human Lung Cancer Tissue

Anti-Caspase-12 Antibody - Background

Caspase 12 is an enzyme known as a cysteine protease. It belongs to a family of enzymes called caspases that cleave their substrates at C-terminal aspartic acid residues. The CASP12 gene was mapped to chromosome 11q22.3. Csp12L attenuates the inflammatory and innate immune response to endotoxins and in doing so may constitute a risk factor for developing sepsis. The estrogen-mediated inhibition of CSP12L expression is a built-in mechanism that has evolved to protect females from infection by favoring a more robust inflammatory response to pathogens, perhaps notably in childbirth.