

Anti-Bcl2A1 Antibody
Catalog # ABO11408**Specification**

Anti-Bcl2A1 Antibody - Product Information

Application	WB
Primary Accession	Q16548
Host	Rabbit
Reactivity	Human
Clonality	Polyclonal
Format	Lyophilized

Description

Rabbit IgG polyclonal antibody for Bcl-2-related protein A1(BCL2A1) detection. Tested with WB in Human.

Reconstitution

Add 0.2ml of distilled water will yield a concentration of 500ug/ml.

Anti-Bcl2A1 Antibody - Additional Information

Gene ID 597

Other Names

Bcl-2-related protein A1, Bcl-2-like protein 5, Bcl2-L-5, Hemopoietic-specific early response protein, Protein BFL-1, Protein GRS, BCL2A1, BCL2L5, BFL1, GRS, HBPA1

Calculated MW

20132 MW KDa

Application Details

Western blot, 0.1-0.5 µg/ml, Human

Subcellular Localization

Cytoplasm.

Tissue Specificity

Seems to be restricted to the hematopoietic compartment. Expressed in peripheral blood, spleen, and bone marrow, at moderate levels in lung, small intestine and testis, at a minimal levels in other tissues. Also found in vascular smooth muscle cells and hematopoietic malignancies.

Protein Name

Bcl-2-related protein A1

Contents

Each vial contains 5mg BSA, 0.9mg NaCl, 0.2mg Na₂HPO₄, 0.05mg Thimerosal, 0.05mg NaN₃.

Immunogen

A synthetic peptide corresponding to a sequence at the N-terminus of human Bcl2A1(1-16aa MTDCEFGYIYRLAQDY).

Purification

Immunogen affinity purified.

Cross Reactivity

No cross reactivity with other proteins

Storage

At -20°C for one year. After r°Constitution, at 4°C for one month. It°Can also be aliquotted and stored frozen at -20°C for a longer time.Avoid repeated freezing and thawing.

Anti-Bcl2A1 Antibody - Protein Information

Name BCL2A1

Synonyms BCL2L5, BFL1, GRS, HBPA1

Function

Retards apoptosis induced by IL-3 deprivation. May function in the response of hemopoietic cells to external signals and in maintaining endothelial survival during infection (By similarity). Can inhibit apoptosis induced by serum starvation in the mammary epithelial cell line HC11 (By similarity).

Cellular Location

Cytoplasm.

Tissue Location

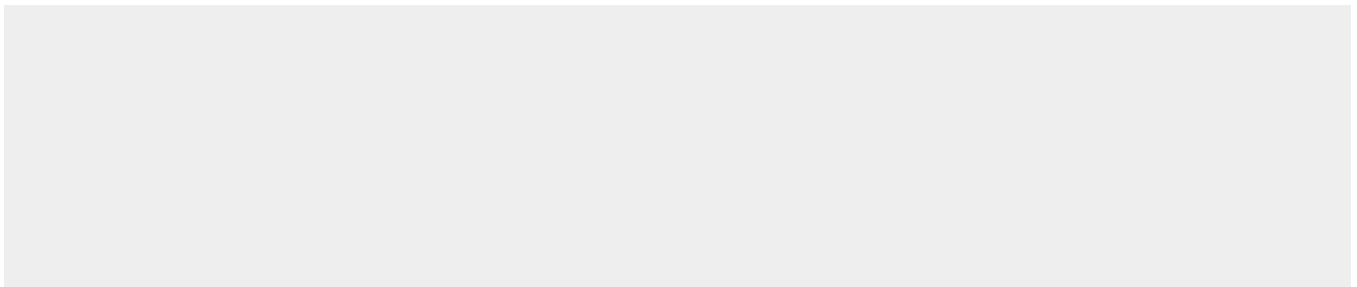
Seems to be restricted to the hematopoietic compartment. Expressed in peripheral blood, spleen, and bone marrow, at moderate levels in lung, small intestine and testis, at a minimal levels in other tissues. Also found in vascular smooth muscle cells and hematopoietic malignancies

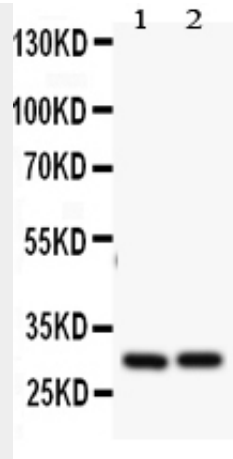
Anti-Bcl2A1 Antibody - Protocols

Provided below are standard protocols that you may find useful for product applications.

- [Western Blot](#)
- [Blocking Peptides](#)
- [Dot Blot](#)
- [Immunohistochemistry](#)
- [Immunofluorescence](#)
- [Immunoprecipitation](#)
- [Flow Cytometry](#)
- [Cell Culture](#)

Anti-Bcl2A1 Antibody - Images





Anti- Bcl2A1 antibody, ABO11408, Western blotting All lanes: Anti Bcl2A1(ABO11408) at 0.5ug/ml Lane 1: HELA Whole Cell Lysate at 40ug Lane 2: JURKAT Whole Cell Lysate at 40ug Predicted bind size: 30KD Observed bind size: 30KD

Anti-Bcl2A1 Antibody - Background

Bcl-2-related protein A1(BCL2A1), is the human homolog of the murine A1, and maps to chromosome 15q24.3. The BCL2A1 gene has also been referred to as BCL2L5, BFL1, and GRS. Bfl-1 protein suppresses apoptosis induced by the p53 tumor suppressor protein in a manner similar to other Bcl-2 family members such as Bcl-2, Bcl-xL and EBV-BHRF1. In addition, the bfl-1 gene cooperates efficiently with the Ela oncogene in transformation of primary rodent epithelial cells. The human bfl-1 gene may play an important role in carcinogenesis.