

Anti-BAG2 Antibody
Catalog # ABO11405**Specification****Anti-BAG2 Antibody - Product Information**

Application	WB
Primary Accession	O95816
Host	Rabbit
Reactivity	Human, Mouse, Rat
Clonality	Polyclonal
Format	Lyophilized

Description

Rabbit IgG polyclonal antibody for BAG family molecular chaperone regulator 2(BAG2) detection. Tested with WB in Human;Mouse;Rat.

Reconstitution

Add 0.2ml of distilled water will yield a concentration of 500ug/ml.

Anti-BAG2 Antibody - Additional Information

Gene ID 9532

Other Names

BAG family molecular chaperone regulator 2, BAG-2, Bcl-2-associated athanogene 2, BAG2

Calculated MW

23772 MW KDa

Application Details

Western blot, 0.1-0.5 µg/ml, Human, Rat, Mouse

Protein Name

BAG family molecular chaperone regulator 2

Contents

Each vial contains 5mg BSA, 0.9mg NaCl, 0.2mg Na₂HPO₄, 0.05mg Thimerosal, 0.05mg NaN₃.

Immunogen

A synthetic peptide corresponding to a sequence at the N-terminus of human BAG2(1-14aa MAQAKINAKANEGR), different from the related mouse and rat sequences by two amino acids.

Purification

Immunogen affinity purified.

Cross Reactivity

No cross reactivity with other proteins

Storage

At -20°C for one year. After r°Constitution, at 4°C for one month. It°Can also be

aliquotted and stored frozen at -20°C for a longer time. Avoid repeated freezing and thawing.

Anti-BAG2 Antibody - Protein Information

Name BAG2

Function

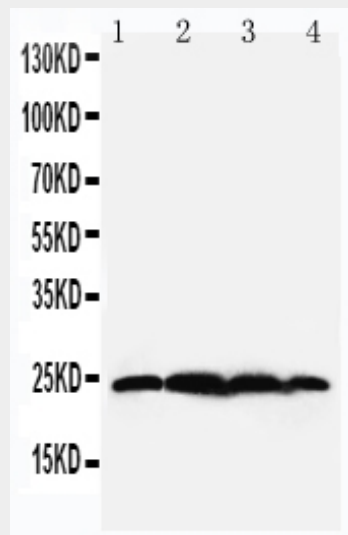
Co-chaperone for HSP70 and HSC70 chaperone proteins. Acts as a nucleotide-exchange factor (NEF) promoting the release of ADP from the HSP70 and HSC70 proteins thereby triggering client/substrate protein release (PubMed: [24318877](http://www.uniprot.org/citations/24318877) target="_blank">24318877, PubMed: [9873016](http://www.uniprot.org/citations/9873016) target="_blank">9873016).

Anti-BAG2 Antibody - Protocols

Provided below are standard protocols that you may find useful for product applications.

- [Western Blot](#)
- [Blocking Peptides](#)
- [Dot Blot](#)
- [Immunohistochemistry](#)
- [Immunofluorescence](#)
- [Immunoprecipitation](#)
- [Flow Cytometry](#)
- [Cell Culture](#)

Anti-BAG2 Antibody - Images



Anti-BAG2 antibody, ABO11405, Western blotting
Lane 1: Rat Testis Tissue Lysate
Lane 2: HELA Cell Lysate
Lane 3: A549 Cell Lysate
Lane 4: A431 Cell Lysate

Anti-BAG2 Antibody - Background

BAG family molecular chaperone regulator 2 is a protein that in humans is encoded by the BAG2

gene. The predicted BAG2 protein contains 211 amino acids. The BAG domains of BAG1, BAG2, and BAG3 interact specifically with the Hsc70 ATPase domain in vitro and in mammalian cells. All 3 proteins bind with high affinity to the ATPase domain of Hsc70 and inhibit its chaperone activity in a Hip-repressible manner. The functional antagonisms displayed between BAG family proteins and Hip suggest that a proper balance of these 2 types of protein is required for achieving optimal cycles of substrate binding and release required for inducing conformational changes in proteins, with Hip promoting peptide substrate binding by Hsc70/Hsp70 and BAG family proteins promoting dissociation.