

**Anti-WISP1/CCN4 Antibody**  
Catalog # ABO11396**Specification****Anti-WISP1/CCN4 Antibody - Product Information**

Application	IHC, WB, ICC
Primary Accession	<a href="#">O95388</a>
Host	Rabbit
Reactivity	Human, Mouse, Rat
Clonality	Polyclonal
Format	Lyophilized

**Description**

Rabbit IgG polyclonal antibody for WNT1-inducible-signaling pathway protein 1(WISP1) detection. Tested with WB, IHC-P, IHC-F, ICC in Human;Mouse;Rat.

**Reconstitution**

Add 0.2ml of distilled water will yield a concentration of 500ug/ml.

**Anti-WISP1/CCN4 Antibody - Additional Information**

**Gene ID** 8840

**Other Names**

WNT1-inducible-signaling pathway protein 1, WISP-1, CCN family member 4, Wnt-1-induced secreted protein, WISP1, CCN4

**Calculated MW**

40331 MW KDa

**Application Details**

Immunocytochemistry , 0.5-1 µg/ml, Human, Mouse, Rat<br>Immunohistochemistry(Frozen Section), 0.5-1 µg/ml, Rat, Human, Mouse<br>Immunohistochemistry(Paraffin-embedded Section), 0.5-1 µg/ml, Human, Rat, Mouse, By Heat<br>Western blot, 0.1-0.5 µg/ml, Human, Mouse, Rat<br>

**Subcellular Localization**

Secreted.

**Tissue Specificity**

Expressed in heart, kidney, lung, pancreas, placenta, ovary, small intestine and spleen. Isoform 2 is expressed predominantly in scirrhou gastric carcinoma and, weakly in placenta. Overexpression is associated with several cancers including breast cancer and colon tumors. Isoform 2 is overexpressed in scirrhou gastric carcinoma.

**Protein Name**

WNT1-inducible-signaling pathway protein 1

**Contents**

Each vial contains 5mg BSA, 0.9mg NaCl, 0.2mg Na<sub>2</sub>HPO<sub>4</sub>, 0.05mg Thimerosal, 0.05mg NaN<sub>3</sub>.

### Immunogen

A synthetic peptide corresponding to a sequence at the C-terminus of human WISP1(354-367aa ADLESYPDFSEIAN), different from the related mouse and rat sequences by one amino acid.

### Purification

Immunogen affinity purified.

### Cross Reactivity

No cross reactivity with other proteins

### Storage

**At -20°C for one year. After reconstitution, at 4°C for one month. It can also be aliquotted and stored frozen at -20°C for a longer time. Avoid repeated freezing and thawing.**

### Sequence Similarities

Belongs to the CCN family.

## Anti-WISP1/CCN4 Antibody - Protein Information

**Name** CCN4 ([HGNC:12769](#))

**Synonyms** WISP1

### Function

Downstream regulator in the Wnt/Frizzled-signaling pathway. Associated with cell survival. Attenuates p53-mediated apoptosis in response to DNA damage through activation of AKT kinase. Up-regulates the anti-apoptotic Bcl-X(L) protein. Adheres to skin and melanoma fibroblasts. In vitro binding to skin fibroblasts occurs through the proteoglycans, decorin and biglycan.

### Cellular Location

Secreted.

### Tissue Location

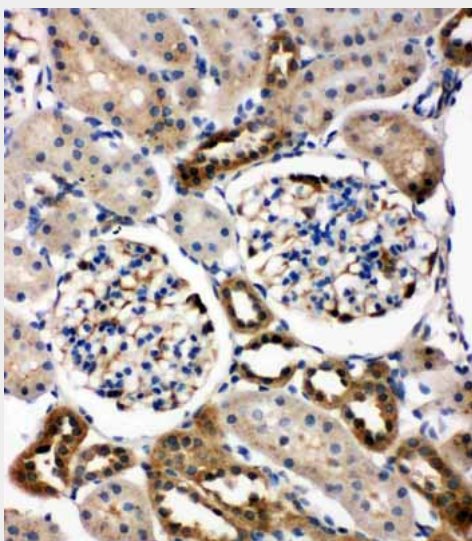
Expressed in heart, kidney, lung, pancreas, placenta, ovary, small intestine and spleen. Isoform 2 is expressed predominantly in scirrhous gastric carcinoma and, weakly in placenta Overexpression is associated with several cancers including breast cancer and colon tumors. Isoform 2 is overexpressed in scirrhous gastric carcinoma

## Anti-WISP1/CCN4 Antibody - Protocols

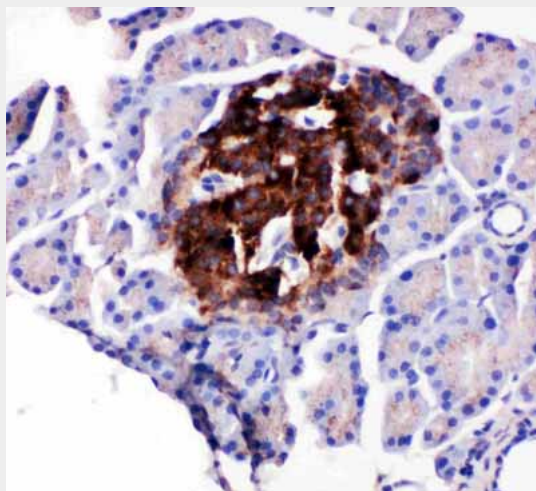
Provided below are standard protocols that you may find useful for product applications.

- [Western Blot](#)
- [Blocking Peptides](#)
- [Dot Blot](#)
- [Immunohistochemistry](#)
- [Immunofluorescence](#)
- [Immunoprecipitation](#)
- [Flow Cytometry](#)
- [Cell Culture](#)

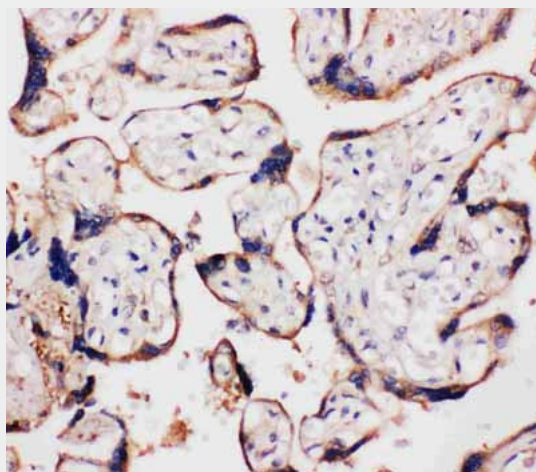
## Anti-WISP1/CCN4 Antibody - Images



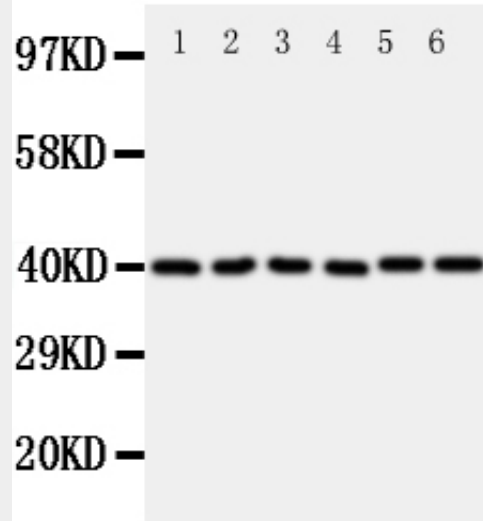
Anti-WISP1 antibody, ABO11396, IHC(P)IHC(P): Rat Kidney Tissue



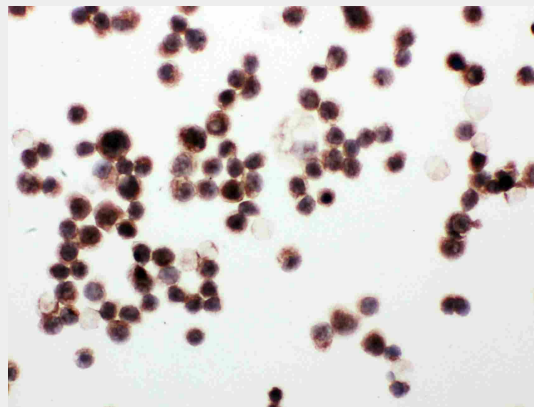
Anti-WISP1 antibody, ABO11396, IHC(P)IHC(P): Rat Pancreas Tissue



Anti-WISP1 antibody, ABO11396, IHC(P)IHC(P): Human Placenta Tissue



Anti-WISP1 antibody, ABO11396, Western blotting All lanes: Anti WISP1 (ABO11396) at 0.5ug/ml  
 Lane 1: Rat Heart Tissue Lysate at 50ug  
 Lane 2: Rat Kidney Tissue Lysate at 50ug  
 Lane 3: Rat Lung Tissue Lysate at 50ug  
 Lane 4: A549 Whole Cell Lysate at 40ug  
 Lane 5: A431 Whole Cell Lysate at 40ug  
 Lane 6: COLO320 Whole Cell Lysate at 40ug  
 Predicted bind size: 40KD  
 Observed bind size: 40KD



Anti-WISP1 antibody, ABO11396, ICC/ICC: MCF-7 Cell

### Anti-WISP1/CCN4 Antibody - Background

WISP1(WNT1-Inducible Signaling Pathway Protein 1), also known as CCN4, is a matricellular protein that in humans is encoded by the WISP1 gene. WISP1 is induced by WNT1 and belongs to the CCN family, which includes connective tissue growth factor, cysteine-rich-61, and nephroblastoma overexpressed(Tanaka et al., 2001). By use of radiation hybrid mapping panels, Pennica et al.(1998) mapped the WISP1 to chromosome 8q24.1-q24.3, roughly 4 Mb distal to MYC. Pennica et al.(1998) found that 2 distinct systems demonstrated that WISP induction was associated with expression of WNT1. WISP1 genomic DNA was amplified in colon cancer cell lines and in human colon tumors, and its RNA was overexpressed in 84% of tumors examined compared with patient-matched normal mucosa.