

Anti-Protein Convertase 2 Antibody
Catalog # ABO11392**Specification****Anti-Protein Convertase 2 Antibody - Product Information**

Application	IHC, WB
Primary Accession	P16519
Host	Rabbit
Reactivity	Human, Mouse, Rat
Clonality	Polyclonal
Format	Lyophilized

Description

Rabbit IgG polyclonal antibody for Neuroendocrine convertase 2(PCSK2) detection. Tested with WB, IHC-P in Human;Mouse;Rat.

Reconstitution

Add 0.2ml of distilled water will yield a concentration of 500ug/ml.

Anti-Protein Convertase 2 Antibody - Additional Information

Gene ID 5126

Other Names

Neuroendocrine convertase 2, NEC 2, 3.4.21.94, KEX2-like endoprotease 2, Prohormone convertase 2, Proprotein convertase 2, PC2, PCSK2, NEC2

Calculated MW

70565 MW KDa

Application Details

Immunohistochemistry(Paraffin-embedded Section), 0.5-1 µg/ml, Human, Rat, Mouse, By Heat
Western blot, 0.1-0.5 µg/ml, Human, Mouse, Rat

Subcellular Localization

Cytoplasmic vesicle, secretory vesicle. Localized in the secretion granules.

Protein Name

Neuroendocrine convertase 2

Contents

Each vial contains 5mg BSA, 0.9mg NaCl, 0.2mg Na₂HPO₄, 0.05mg Thimerosal, 0.05mg Na₃N.

Immunogen

A synthetic peptide corresponding to a sequence at the N-terminus of human Proprotein Convertase 2(110-125aa GYRDINEIDINMNDPL), identical to the related mouse and rat sequences.

Purification

Immunogen affinity purified.

Cross Reactivity

No cross reactivity with other proteins

Storage

At -20°C for one year. After reconstitution, at 4°C for one month. It can also be aliquotted and stored frozen at -20°C for a longer time. Avoid repeated freezing and thawing.

Sequence Similarities

Belongs to the peptidase S8 family. Furin subfamily.

Anti-Protein Convertase 2 Antibody - Protein Information

Name PCSK2

Synonyms NEC2

Function

Serine endopeptidase which is involved in the processing of hormone and other protein precursors at sites comprised of pairs of basic amino acid residues. Responsible for the release of glucagon from proglucagon in pancreatic A cells.

Cellular Location

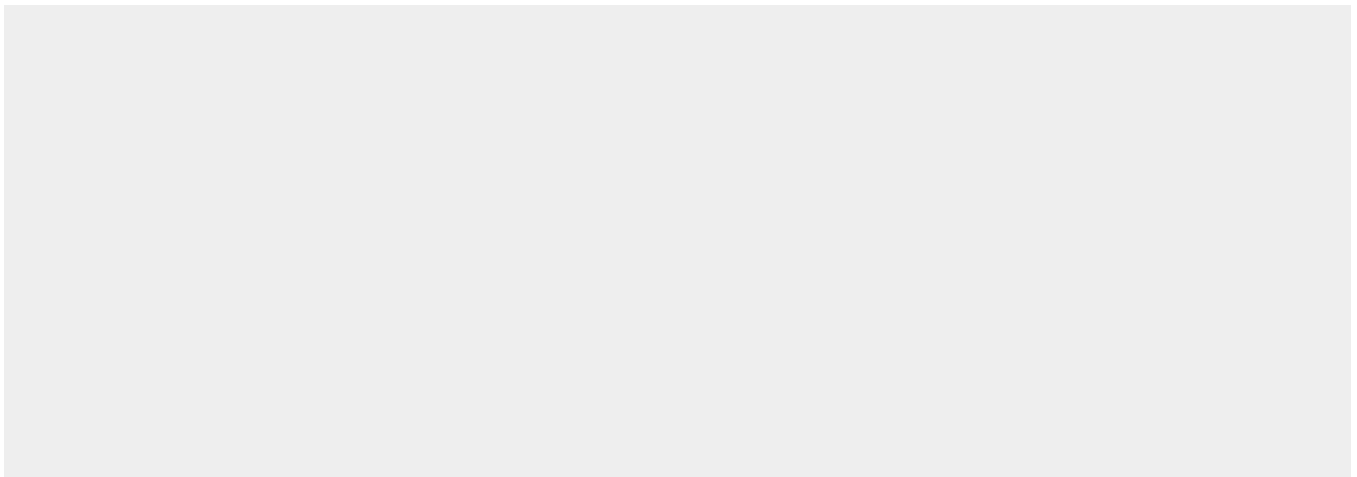
Cytoplasmic vesicle, secretory vesicle. Secreted. Note=Localized in the secretion granules

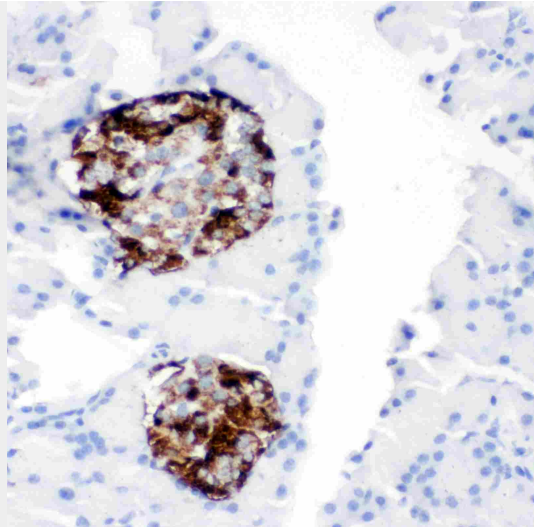
Anti-Protein Convertase 2 Antibody - Protocols

Provided below are standard protocols that you may find useful for product applications.

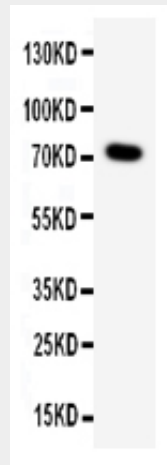
- [Western Blot](#)
- [Blocking Peptides](#)
- [Dot Blot](#)
- [Immunohistochemistry](#)
- [Immunofluorescence](#)
- [Immunoprecipitation](#)
- [Flow Cytometry](#)
- [Cell Culture](#)

Anti-Protein Convertase 2 Antibody - Images





Anti-Proprotein Convertase 2 antibody, ABO11392, IHC(P)IHC(P): Rat Pancreas Tissue



Anti-Proprotein Convertase 2 antibody, ABO11392, Western blotting All lanes: Anti Proprotein Convertase 2 (ABO11392) at 0.5ug/ml WB: PANC Whole Cell Lysate at 40ug Predicted bind size: 71KD Observed bind size: 71KD

Anti-ProProtein Convertase 2 Antibody - Background

PCSK2 (Proprotein Convertase, Subtilisin/Kexin-Type, 2), also known as PC2 or NEC2, is an enzyme responsible for the first step in the maturation of many neuroendocrine peptides from their precursors, such as the conversion of proinsulin to insulin intermediates. Seidah et al. (1991) mapped the NEC2 gene to human chromosome 20p11.2-p11.1. Ohagi et al. (1992) observed expression of the chloramphenicol acetyltransferase reporter fusions containing the putative promoter region in insulinoma cells but not in hepatoma cells, consistent with the known tissue-specific pattern of expression of the PC2 gene. Analysis of the level of CAT activity with several deletion mutants identified the region from -1100 to -539 from the translation start site as essential for PC2 promoter activity.