

**Anti-Annexin VII Antibody**  
Catalog # ABO11382

**Specification**

---

**Anti-Annexin VII Antibody - Product Information**

Application	WB, IHC
Primary Accession	<a href="#">P20073</a>
Host	Rabbit
Reactivity	Human, Mouse, Rat
Clonality	Polyclonal
Format	Lyophilized

**Description**

Rabbit IgG polyclonal antibody for Annexin A7 (ANXA7) detection. Tested with WB, IHC-P in Human; Mouse; Rat.

**Reconstitution**

Add 0.2ml of distilled water will yield a concentration of 500ug/ml.

**Anti-Annexin VII Antibody - Additional Information**

**Gene ID** 310

**Other Names**

Annexin A7, Annexin VII, Annexin-7, Synexin, ANXA7, ANX7, SNX

**Calculated MW**

52739 MW KDa

**Application Details**

Immunohistochemistry (Paraffin-embedded Section), 0.5-1 µg/ml, Human, Mouse, Rat, By Heat  
Western blot, 0.1-0.5 µg/ml, Human, Rat, Mouse

**Tissue Specificity**

Isoform 1 is expressed in brain, heart and skeletal muscle. Isoform 2 is more abundant in liver, lung, kidney, spleen, fibroblasts and placenta. .

**Protein Name**

Annexin A7

**Contents**

Each vial contains 5mg BSA, 0.9mg NaCl, 0.2mg Na<sub>2</sub>HPO<sub>4</sub>, 0.05mg Thimerosal, 0.05mg Na<sub>3</sub>N.

**Immunogen**

A synthetic peptide corresponding to a sequence at the C-terminus of human Annexin VII (445-460aa TRSEIDL VQIKQMFAQ), different from the related mouse and rat sequences by one amino acid.

**Purification**

Immunogen affinity purified.

**Cross Reactivity**

No cross reactivity with other proteins

**Storage**

At -20°C for one year. After reconstitution, at 4°C for one month. It can also be aliquotted and stored frozen at -20°C for a longer time. Avoid repeated freezing and thawing.

**Sequence Similarities**

Belongs to the annexin family.

**Anti-Annexin VII Antibody - Protein Information**

**Name** ANXA7

**Synonyms** ANX7, SNX

**Function**

Calcium/phospholipid-binding protein which promotes membrane fusion and is involved in exocytosis.

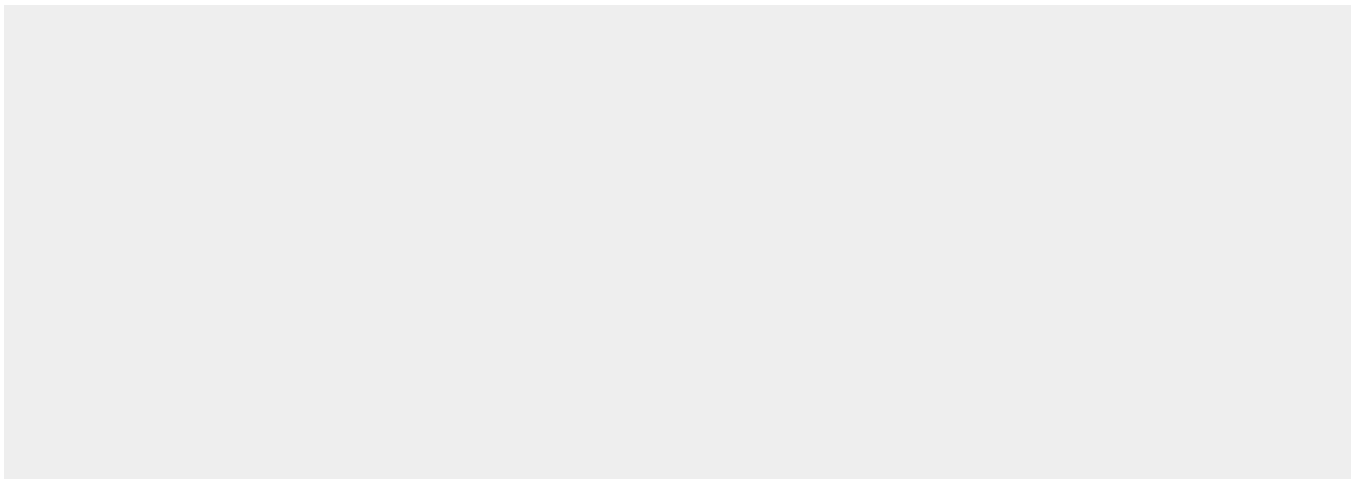
**Tissue Location**

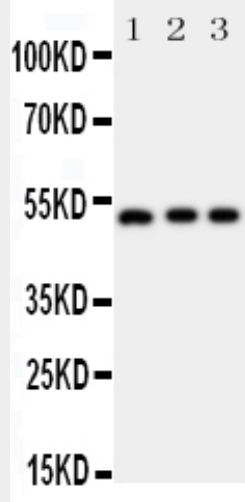
Isoform 1 is expressed in brain, heart and skeletal muscle. Isoform 2 is more abundant in liver, lung, kidney, spleen, fibroblasts and placenta.

**Anti-Annexin VII Antibody - Protocols**

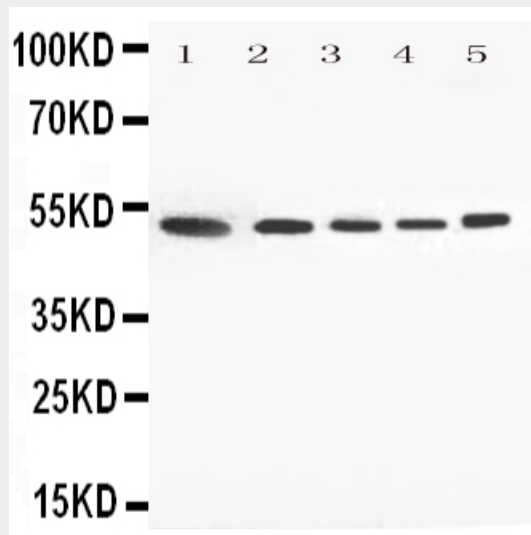
Provided below are standard protocols that you may find useful for product applications.

- [Western Blot](#)
- [Blocking Peptides](#)
- [Dot Blot](#)
- [Immunohistochemistry](#)
- [Immunofluorescence](#)
- [Immunoprecipitation](#)
- [Flow Cytometry](#)
- [Cell Culture](#)

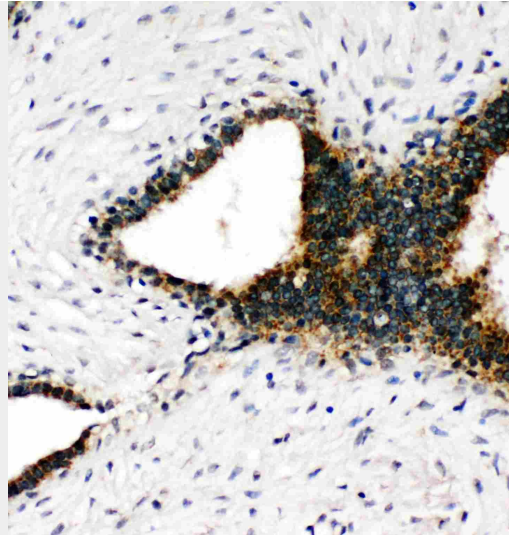
**Anti-Annexin VII Antibody - Images**



Anti-Annexin VII antibody, ABO11382, Western blotting All lanes: Anti Annexin VII (ABO11382) at 0.5ug/ml Lane 1: Rat Skeletal Muscle Tissue Lysate at 50ug Lane 2: SMMC Whole Cell Lysate at 40ug Lane 3: COLO320 Whole Cell Lysate at 40ug Predicted bind size: 52KD Observed bind size: 52KD



Anti-Annexin VII antibody, ABO11382, Western blotting All lanes: Anti Annexin VII (ABO11382) at 0.5ug/ml Lane 1: Rat Skeletal Muscle Tissue Lysate at 50ug Lane 2: HELA Whole Cell Lysate at 40ug Lane 3: A549 Whole Cell Lysate at 40ug Lane 4: SMMC Whole Cell Lysate at 40ug Lane 5: HT1080 Whole Cell Lysate at 40ug Predicted bind size: 52KD Observed bind size: 52KD



Anti-Annexin VII antibody, ABO11382, IHC(P)IHC(P): Human Mammary Cancer Tissue

#### **Anti-Annexin VII Antibody - Background**

ANXA7(Annexin A7), also known as ANX7 or SNX, is a protein that in humans is encoded by the ANXA7 gene. Annexin VII is a member of the annexin family of calcium-dependent phospholipid binding proteins. Shirvan et al.(1994) isolated genomic clones of the ANXA7 gene and assigned the gene to 10q21.1-q21.2 by study of somatic cell hybrids and by in situ hybridization. Srivastava et al.(2001) concluded that the ANX7 gene exhibits many biologic and genetic properties expected of a tumor suppressor gene and may play a role in prostate cancer progression. Caohuy et al.(1996) present experimental evidence, based on studies of recombinant human ANXA7 and isolated bovine chromaffin cells, that ANXA7 is a Ca(2+)-dependent GTP binding protein. ANXA7 was active in a chromaffin granule aggregation assays in the presence of Ca(2+) and GTP, and was deactivated upon GTP hydrolysis.