

**Anti-ADAM2 Antibody**  
Catalog # ABO11375**Specification**

---

**Anti-ADAM2 Antibody - Product Information**

Application	<b>WB</b>
Primary Accession	<a href="#">Q99965</a>
Host	<b>Rabbit</b>
Reactivity	<b>Human</b>
Clonality	<b>Polyclonal</b>
Format	<b>Lyophilized</b>

**Description**

Rabbit IgG polyclonal antibody for Disintegrin and metalloproteinase domain-containing protein 2(ADAM2) detection. Tested with WB in Human.

**Reconstitution**

Add 0.2ml of distilled water will yield a concentration of 500ug/ml.

**Anti-ADAM2 Antibody - Additional Information**

**Gene ID** 2515

**Other Names**

Disintegrin and metalloproteinase domain-containing protein 2, ADAM 2, Cancer/testis antigen 15, CT15, Fertilin subunit beta, PH-30, PH30, PH30-beta, ADAM2, FTNB

**Calculated MW**

82457 MW KDa

**Application Details**

Western blot, 0.1-0.5 µg/ml, Human<br>

**Subcellular Localization**

Membrane; Single-pass type I membrane protein.

**Tissue Specificity**

Expressed specifically in spermatogenic cells in the seminiferous cells. Not detected in fetal tissues.

**Protein Name**

Disintegrin and metalloproteinase domain-containing protein 2

**Contents**

Each vial contains 5mg BSA, 0.9mg NaCl, 0.2mg Na<sub>2</sub>HPO<sub>4</sub>, 0.05mg Thimerosal, 0.05mg NaN<sub>3</sub>.

**Immunogen**

A synthetic peptide corresponding to a sequence at the C-terminus of human ADAM2(701-715aa VLI<sub>1</sub>AIMVKVNFQRKK).

**Purification**

Immunogen affinity purified.

**Cross Reactivity**

No cross reactivity with other proteins

**Storage**

**At -20°C for one year. After r°Constitution, at 4°C for one month. It°Can also be aliquotted and stored frozen at -20°C for a longer time.Avoid repeated freezing and thawing.**

**Sequence Similarities**

Contains 1 disintegrin domain.

**Anti-ADAM2 Antibody - Protein Information**

**Name** ADAM2

**Synonyms** FTNB

**Function**

Sperm surface membrane protein that may be involved in sperm- egg plasma membrane adhesion and fusion during fertilization. Could have a direct role in sperm-zona binding or migration of sperm from the uterus into the oviduct. Interactions with egg membrane could be mediated via binding between its disintegrin-like domain to one or more integrins receptors on the egg. This is a non catalytic metalloprotease-like protein.

**Cellular Location**

Membrane; Single-pass type I membrane protein.

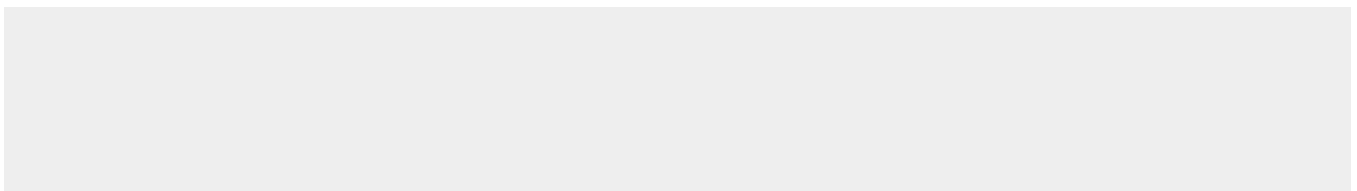
**Tissue Location**

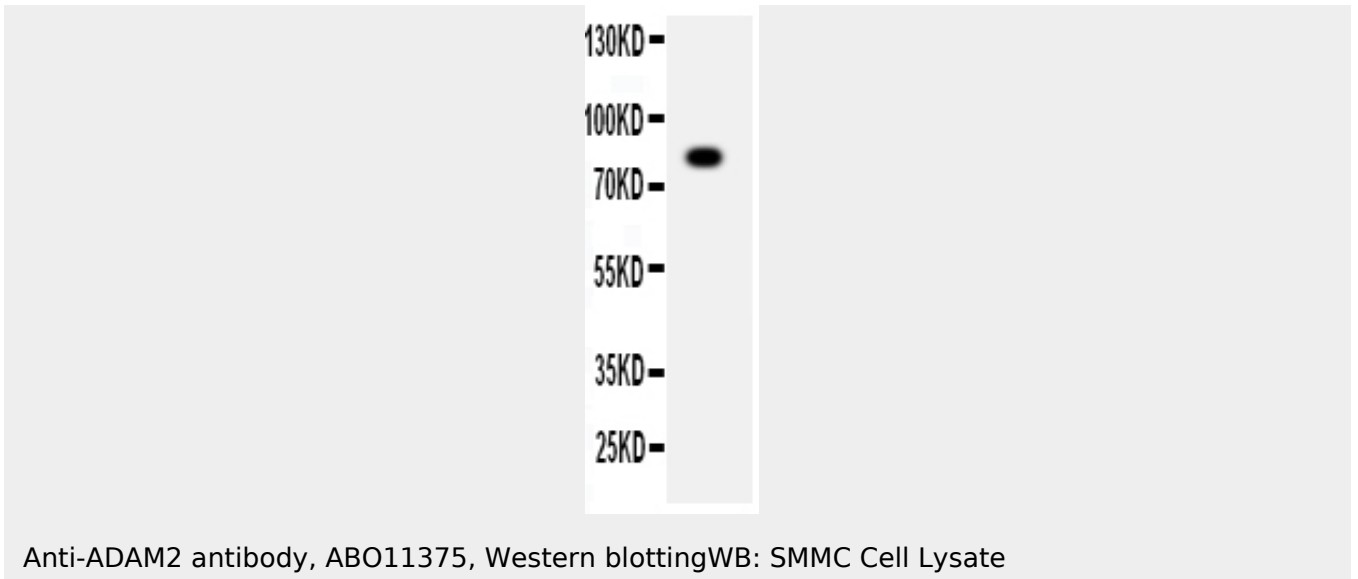
Expressed specifically in spermatogenic cells in the seminiferous cells. Not detected in fetal tissues

**Anti-ADAM2 Antibody - Protocols**

Provided below are standard protocols that you may find useful for product applications.

- [Western Blot](#)
- [Blocking Peptides](#)
- [Dot Blot](#)
- [Immunohistochemistry](#)
- [Immunofluorescence](#)
- [Immunoprecipitation](#)
- [Flow Cytometry](#)
- [Cell Culture](#)

**Anti-ADAM2 Antibody - Images**



### **Anti-ADAM2 Antibody - Background**

ADAM2(A Disintegrin and Metalloproteinase Domain 2) , also known as FTNB or PH30, is an enzyme that in humans is encoded by the ADAM2 gene. This gene encodes a member of the ADAM(a disintegrin and metalloprotease domain) family. Members of this family are membrane-anchored proteins structurally related to snake venom disintegrins, and have been implicated in a variety of biological processes involving cell-cell and cell-matrix interactions, including fertilization, muscle development, and neurogenesis. This member is a subunit of an integral sperm membrane glycoprotein called fertilin, which plays an important role in sperm-egg interactions. Burkin et al.(1997) used fluorescence in situ hybridization to map the FTNB gene to 8p11.2.