

**Anti-TRAF1 Antibody**  
Catalog # ABO11313

**Specification**

---

**Anti-TRAF1 Antibody - Product Information**

Application	WB
Primary Accession	<a href="#">Q13077</a>
Host	Rabbit
Reactivity	Human, Mouse
Clonality	Polyclonal
Format	Lyophilized

**Description**

Rabbit IgG polyclonal antibody for TNF receptor-associated factor 1 (TRAF1) detection. Tested with WB in Human;Mouse.

**Reconstitution**

Add 0.2ml of distilled water will yield a concentration of 500ug/ml.

**Anti-TRAF1 Antibody - Additional Information**

**Gene ID** 7185

**Other Names**

TNF receptor-associated factor 1, Epstein-Barr virus-induced protein 6, TRAF1, EBI6

**Calculated MW**

46164 MW KDa

**Application Details**

Western blot, 0.1-0.5 µg/ml, Human, Mouse<br>

**Protein Name**

TNF receptor-associated factor 1

**Contents**

Each vial contains 5mg BSA, 0.9mg NaCl, 0.2mg Na<sub>2</sub>HPO<sub>4</sub>, 0.05mg Thimerosal, 0.05mg NaN<sub>3</sub>.

**Immunogen**

A synthetic peptide corresponding to a sequence in the middle region of human TRAF1(220-235aa HQSQLDRERILSLEQR), different from the related mouse sequence by one amino acid.

**Purification**

Immunogen affinity purified.

**Cross Reactivity**

No cross reactivity with other proteins

**Storage**

**At -20°C for one year. After r°Constitution, at 4°C for one month. It°Can also be**

aliquotted and stored frozen at -20°C for a longer time. Avoid repeated freezing and thawing.

#### Sequence Similarities

Contains 1 MATH domain.

### Anti-TRAF1 Antibody - Protein Information

**Name** TRAF1

**Synonyms** EBI6

#### Function

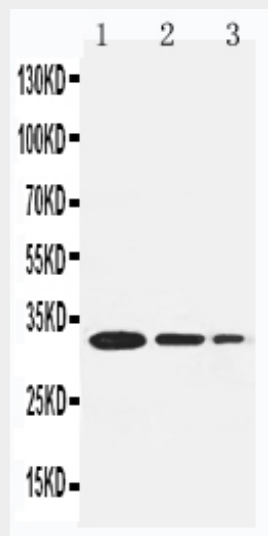
Adapter molecule that regulates the activation of NF-kappa-B and JNK. Plays a role in the regulation of cell survival and apoptosis. The heterotrimer formed by TRAF1 and TRAF2 is part of a E3 ubiquitin- protein ligase complex that promotes ubiquitination of target proteins, such as MAP3K14. The TRAF1/TRAF2 complex recruits the antiapoptotic E3 protein-ubiquitin ligases BIRC2 and BIRC3 to TNFRSF1B/TNFR2.

### Anti-TRAF1 Antibody - Protocols

Provided below are standard protocols that you may find useful for product applications.

- [Western Blot](#)
- [Blocking Peptides](#)
- [Dot Blot](#)
- [Immunohistochemistry](#)
- [Immunofluorescence](#)
- [Immunoprecipitation](#)
- [Flow Cytometry](#)
- [Cell Culture](#)

### Anti-TRAF1 Antibody - Images



Anti-TRAF1 antibody, ABO11313, Western blotting Recombinant Protein Detection Source: E.coli

derived -recombinant Human TRAF1, 30.6KD(162aa tag+ E174-E282)Lane 1: Recombinant Human TRAF1 Protein 5ngLane 2: Recombinant Human TRAF1 Protein 2.5ngLane 3: Recombinant Human TRAF1 Protein 1.25ng

### **Anti-TRAF1 Antibody - Background**

TRAF1(TNF Receptor-Associated Factor 1), also called EBI6, is a protein that in humans is encoded by the TRAF1 gene. The protein encoded by this gene is a member of the TNF receptor(TNFR) associated factor(TRAF) protein family. Siemienski et al.(1997) used fluorescence in situ hybridization to map the TRAF1 gene to 9q33-q34. Mosialos et al.(1995) found that LMP1, the EBV-transforming protein, specifically associates with LAP1(TRAF3) or EBI6 in B lymphoblasts. LMP1 expression redirects LAP1 and EBI6 from scattered cytoplasmic structures to LMP1 plasma membrane patches. Both LAP1 and EBI6 associated with the cytoplasmic domain of p80/TNFR2 in vivo.