

Anti-Stanniocalcin 1/STC1 Antibody
Catalog # ABO11306**Specification****Anti-Stanniocalcin 1/STC1 Antibody - Product Information**

Application	WB
Primary Accession	P52823
Host	Rabbit
Reactivity	Human, Mouse, Rat
Clonality	Polyclonal
Format	Lyophilized

Description

Rabbit IgG polyclonal antibody for Stanniocalcin-1(STC1) detection. Tested with WB in Human;Mouse;Rat.

Reconstitution

Add 0.2ml of distilled water will yield a concentration of 500ug/ml.

Anti-Stanniocalcin 1/STC1 Antibody - Additional Information

Gene ID 6781

Other Names

Stanniocalcin-1, STC-1, STC1, STC

Calculated MW

27621 MW KDa

Application Details

Western blot, 0.1-0.5 µg/ml, Human, Mouse, Rat

Subcellular Localization

Secreted.

Tissue Specificity

Expressed in most tissues, with the highest levels in ovary, prostate, heart, kidney and thyroid. In the kidney, expression is confined to the nephron, specifically in the distal convoluted tubule and in the collecting tubule. Not detected in the brain, liver, spleen, peripheral blood leukocytes and adrenal medulla.

Protein Name

Stanniocalcin-1

Contents

Each vial contains 5mg BSA, 0.9mg NaCl, 0.2mg Na₂HPO₄, 0.05mg Thimerosal, 0.05mg NaN₃.

Immunogen

A synthetic peptide corresponding to a sequence in the middle region of human Stanniocalcin 1(150-167aa QLPNHFSNRYYNRLVRSLS), identical to the related rat and mouse sequences.

Purification

Immunogen affinity purified.

Cross Reactivity

No cross reactivity with other proteins

Storage

At -20°C for one year. After r°Constitution, at 4°C for one month. It°Can also be aliquotted and stored frozen at -20°C for a longer time.Avoid repeated freezing and thawing.

Anti-Stanniocalcin 1/STC1 Antibody - Protein Information

Name STC1

Synonyms STC

Function

Stimulates renal phosphate reabsorption, and could therefore prevent hypercalcemia.

Cellular Location

Secreted.

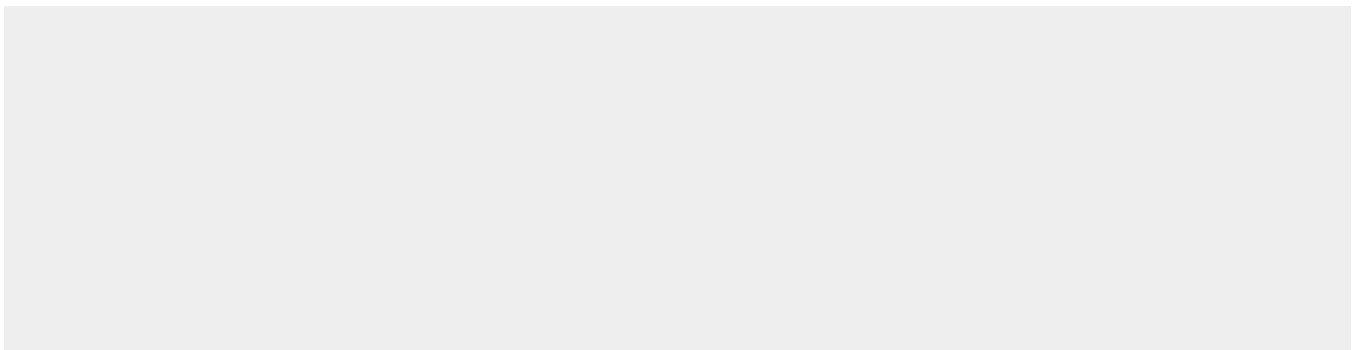
Tissue Location

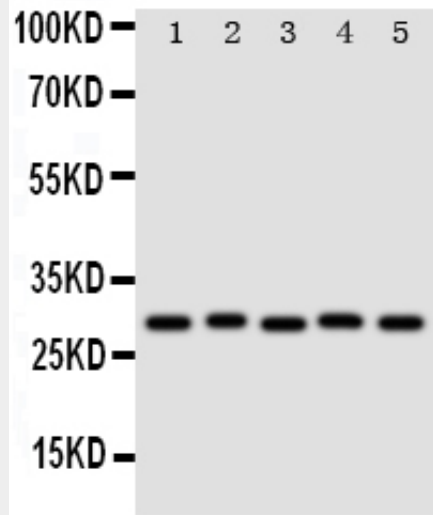
Expressed in most tissues, with the highest levels in ovary, prostate, heart, kidney and thyroid. In the kidney, expression is confined to the nephron, specifically in the distal convoluted tubule and in the collecting tubule. Not detected in the brain, liver, spleen, peripheral blood leukocytes and adrenal medulla

Anti-Stanniocalcin 1/STC1 Antibody - Protocols

Provided below are standard protocols that you may find useful for product applications.

- [Western Blot](#)
- [Blocking Peptides](#)
- [Dot Blot](#)
- [Immunohistochemistry](#)
- [Immunofluorescence](#)
- [Immunoprecipitation](#)
- [Flow Cytometry](#)
- [Cell Culture](#)

Anti-Stanniocalcin 1/STC1 Antibody - Images



Anti-Stanniocalcin 1 antibody, ABO11306, Western blotting
Lane 1: Rat Kidney Tissue Lysate
Lane 2: Rat Intestine Tissue Lysate
Lane 3: Rat Stomach Tissue Lysate
Lane 4: Rat Ovary Tissue Lysate
Lane 5: SW620 Cell Lysate

Anti-Stanniocalcin 1/STC1 Antibody - Background

STC1(Stanniocalcin 1), also called STC, which is encoded by the STC1 gene. By fluorescence in situ hybridization, Chang et al.(1998) mapped the STC1 gene to chromosome 8p21-p11.2. Wagner et al.(1995) found evidence of STC immunoreactivity in human kidney and serum, suggesting the existence of the hormone in mammals. Zhang et al.(1998) reported a constitutive expression of STC in terminally differentiated neurons. Bell et al.(2001) determined that STC1 was 1 of several transcripts upregulated by umbilical vein endothelial cells during capillary morphogenesis in 3-dimensional collagen matrices.