

Anti-B MyB Antibody
Catalog # ABO11231

Specification

Anti-B MyB Antibody - Product Information

Application	WB, IHC, ICC
Primary Accession	P10244
Host	Rabbit
Reactivity	Human, Mouse, Rat
Clonality	Polyclonal
Format	Lyophilized

Description

Rabbit IgG polyclonal antibody for Myb-related protein B(MYBL2) detection. Tested with WB, IHC-P, ICC in Human;Mouse;Rat.

Reconstitution

Add 0.2ml of distilled water will yield a concentration of 500ug/ml.

Anti-B MyB Antibody - Additional Information

Gene ID 4605

Other Names

Myb-related protein B, B-Myb, Myb-like protein 2, MYBL2, BMYB

Calculated MW

78764 MW KDa

Application Details

Immunocytochemistry , 0.5-1 µg/ml, Human, Mouse, Rat
Immunohistochemistry(Paraffin-embedded Section), 0.5-1 µg/ml, Human, Rat, Mouse, By Heat
Western blot, 0.1-0.5 µg/ml, Human, Rat, Mouse

Subcellular Localization

Nucleus.

Protein Name

Myb-related protein B

Contents

Each vial contains 5mg BSA, 0.9mg NaCl, 0.2mg Na₂HPO₄, 0.05mg Thimerosal, 0.05mg NaN₃.

Immunogen

A synthetic peptide corresponding to a sequence at the N-terminus of human B MyB(1-17aa MSRRTRCEDLDELHYQD), identical to the related mouse sequence and different from the related rat sequence by two amino acids.

Purification

Immunogen affinity purified.

Cross Reactivity

No cross reactivity with other proteins

Storage

At -20°C for one year. After reconstitution, at 4°C for one month. It can also be aliquotted and stored frozen at -20°C for a longer time. Avoid repeated freezing and thawing.

Sequence Similarities

Contains 3 HTH myb-type DNA-binding domains.

Anti-B MyB Antibody - Protein Information

Name MYBL2

Synonyms BMYB

Function

Transcription factor involved in the regulation of cell survival, proliferation, and differentiation. Transactivates the expression of the CLU gene.

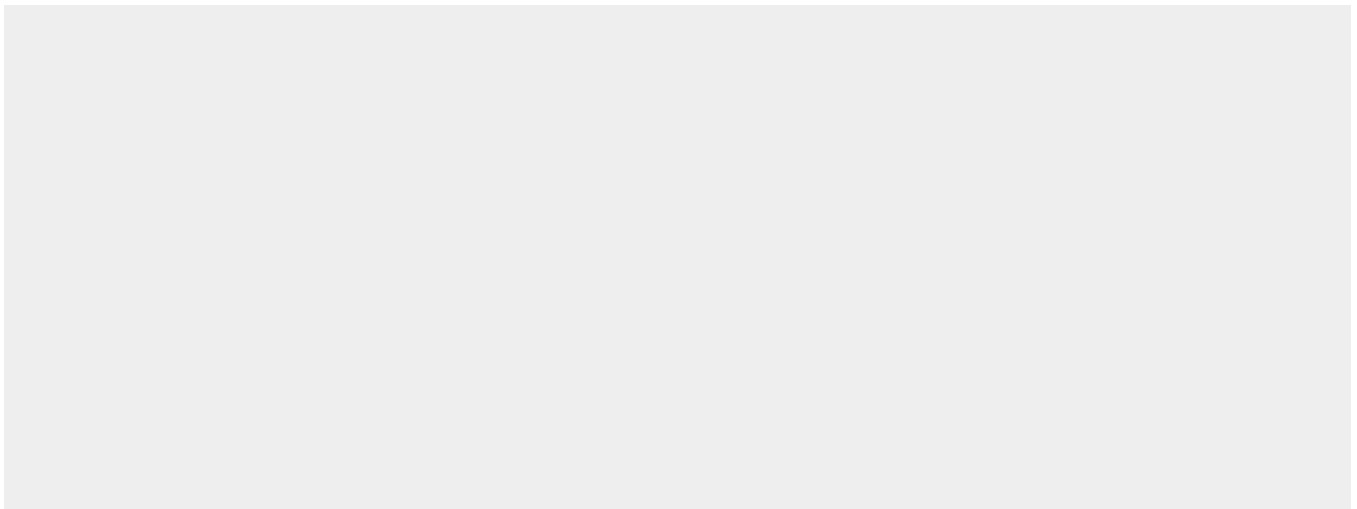
Cellular Location

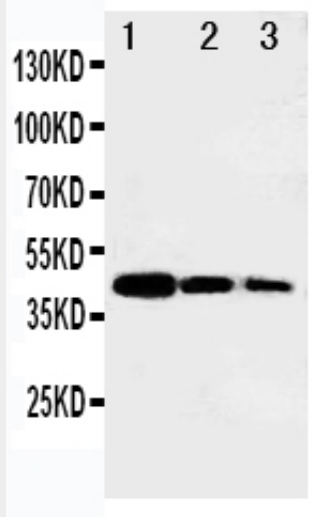
Nucleus.

Anti-B MyB Antibody - Protocols

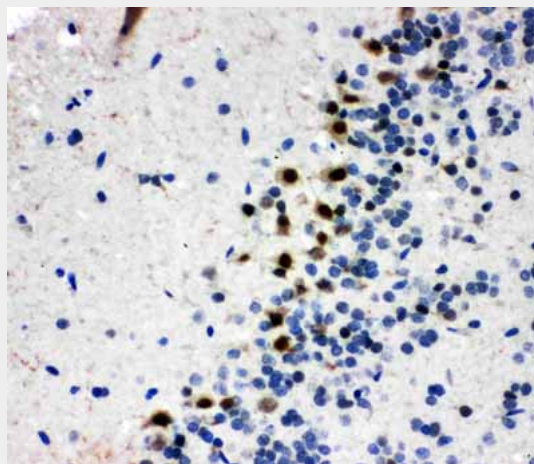
Provided below are standard protocols that you may find useful for product applications.

- [Western Blot](#)
- [Blocking Peptides](#)
- [Dot Blot](#)
- [Immunohistochemistry](#)
- [Immunofluorescence](#)
- [Immunoprecipitation](#)
- [Flow Cytometry](#)
- [Cell Culture](#)

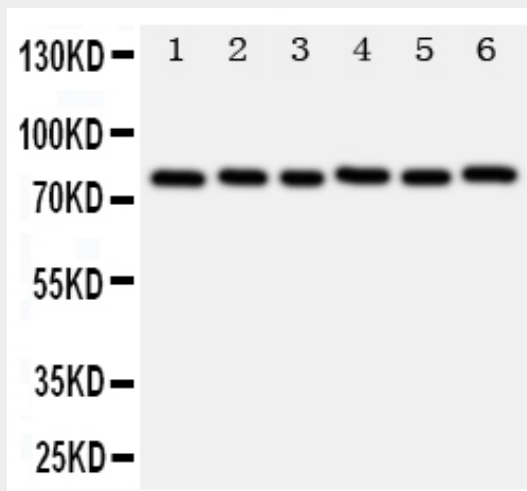
Anti-B MyB Antibody - Images



Anti-B MyB antibody, ABO11231, Western blotting
Recombinant Protein Detection Source: E.coli derived -recombinant Human MYBL2, 46.8KD(162aa tag+ M1-L245)
Lane 1: Recombinant Human MYBL2 Protein 10ng
Lane 2: Recombinant Human MYBL2 Protein 5ng
Lane 3: Recombinant Human MYBL2 Protein 2.5ng

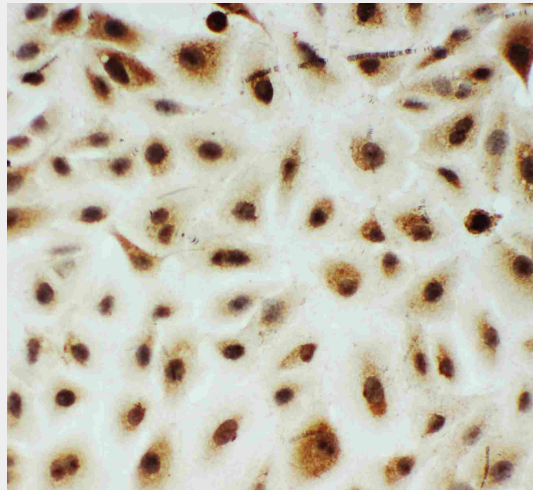


Anti-B MyB antibody, ABO11231, IHC(P)
IHC(P): Rat Brain Tissue

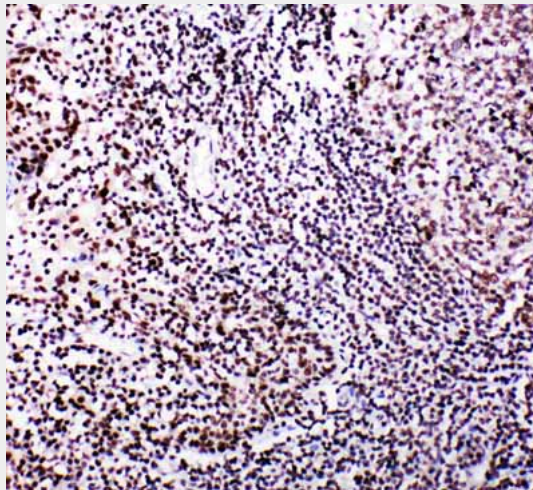


Anti-B MyB antibody, ABO11231, Western blotting
Lane 1: Rat Spleen Tissue Lysate
Lane 2: Rat Thymus Tissue Lysate
Lane 3: Rat Brain Tissue Lysate
Lane 4: HELA Cell Lysate
Lane 5: COLO320

Cell Lysate Lane 6: MCF-7 Cell Lysate



Anti-B MyB antibody, ABO11231, ICCICC: A549 Cell



Anti-B MyB antibody, ABO11231, IHC(P)IHC(P): Human Tonsil Tissue

Anti-B MyB Antibody - Background

MYBL2 (V-MYB avian myeloblastosis viral oncogene homolog-like 2), also called MYB-RELATED GENE BMYB, is a protein that in humans is encoded by the MYBL2 gene. The protein encoded by this gene, a member of the MYB family of transcription factor genes, is a nuclear protein involved in cell cycle progression. Barletta et al.(1991) assigned the MYBL2 gene to chromosome Xq13. However, Noben-Trauth et al.(1996) demonstrated that this assignment was an error. Using mouse Mybl2 cDNA clones as probes, they assigned Mybl2 in an interspecific backcross panel to distal mouse chromosome 2. Using human cDNA probes in combination with fluorescence in situ hybridization analysis, they localized MYBL2 to chromosome 20q13.1, a region that is commonly deleted in myeloid disorders and shows high homology of synteny to mouse chromosome 2. It has been shown to activate the cell division cycle 2, cyclin D1, and insulin-like growth factor-binding protein 5 genes. Transcript variants may exist for this gene, but their full-length natures have not been determined.