

Anti-Matrilin 2 Antibody
Catalog # ABO11229

Specification

Anti-Matrilin 2 Antibody - Product Information

Application	WB, IHC
Primary Accession	O00339
Host	Rabbit
Reactivity	Human, Mouse, Rat
Clonality	Polyclonal
Format	Lyophilized

Description

Rabbit IgG polyclonal antibody for Matrilin-2(MATN2) detection. Tested with WB, IHC-P, IHC-F in Human;Mouse;Rat.

Reconstitution

Add 0.2ml of distilled water will yield a concentration of 500ug/ml.

Anti-Matrilin 2 Antibody - Additional Information

Gene ID 4147

Other Names

Matrilin-2, MATN2

Calculated MW

106837 MW KDa

Application Details

Immunohistochemistry(Frozen Section), 0.5-1 µg/ml, Rat, Human, Mouse
Immunohistochemistry(Paraffin-embedded Section), 0.5-1 µg/ml, Human, Rat, Mouse, By Heat
Western blot, 0.1-0.5 µg/ml, Human, Rat, Mouse

Subcellular Localization

Secreted.

Protein Name

Matrilin-2

Contents

Each vial contains 5mg BSA, 0.9mg NaCl, 0.2mg Na₂HPO₄, 0.05mg Thimerosal, 0.05mg Na₃N.

Immunogen

A synthetic peptide corresponding to a sequence at the C-terminus of human Matrilin 2(937-956aa QRLEEMTQRMEALENRLRYR), identical to the related rat sequence and different from the related mouse sequence by one amino acid.

Purification

Immunogen affinity purified.

Cross Reactivity

No cross reactivity with other proteins

Storage

At -20°C for one year. After reconstitution, at 4°C for one month. It can also be aliquotted and stored frozen at -20°C for a longer time. Avoid repeated freezing and thawing.

Sequence Similarities

Contains 10 EGF-like domains.

Anti-Matrilin 2 Antibody - Protein Information

Name MATN2

Function

Involved in matrix assembly.

Cellular Location

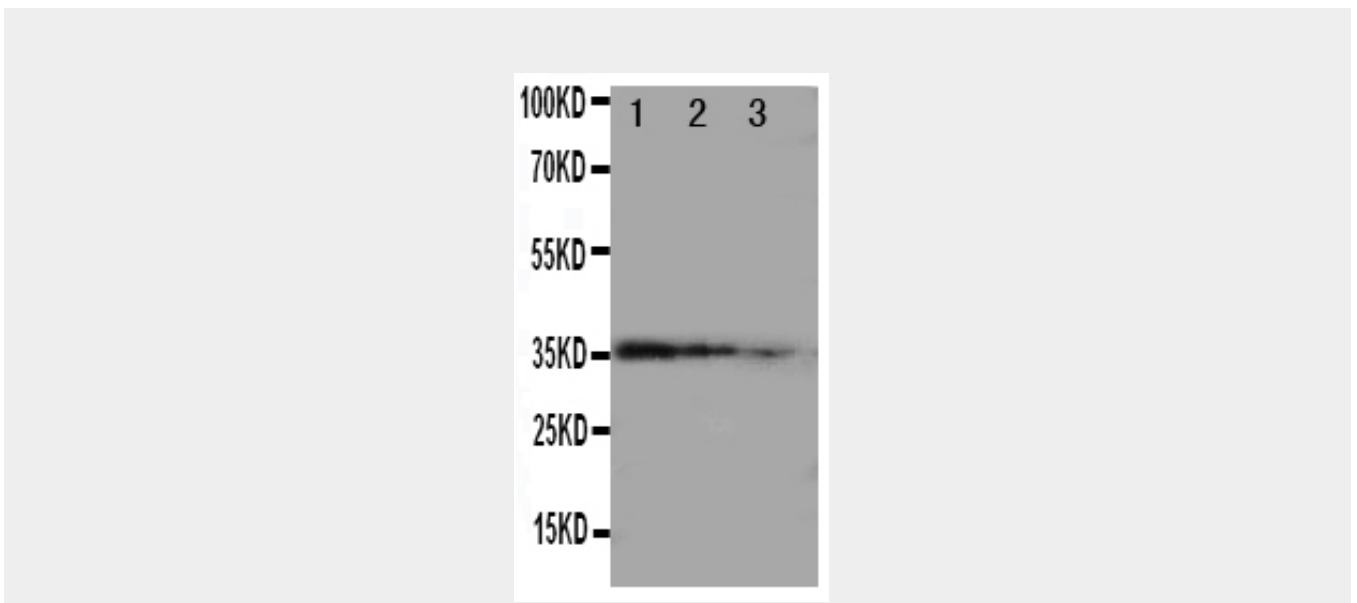
Secreted.

Anti-Matrilin 2 Antibody - Protocols

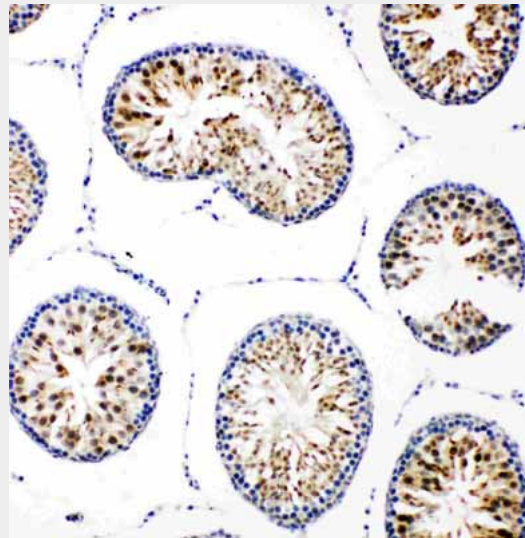
Provided below are standard protocols that you may find useful for product applications.

- [Western Blot](#)
- [Blocking Peptides](#)
- [Dot Blot](#)
- [Immunohistochemistry](#)
- [Immunofluorescence](#)
- [Immunoprecipitation](#)
- [Flow Cytometry](#)
- [Cell Culture](#)

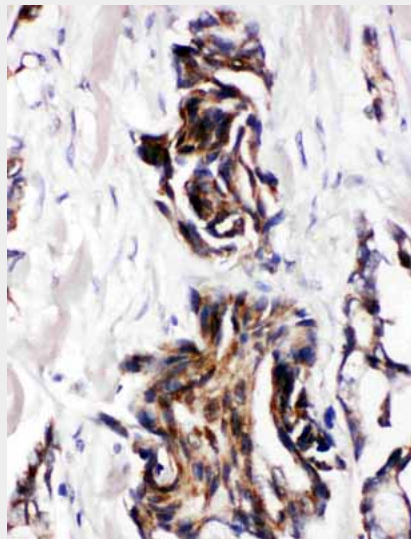
Anti-Matrilin 2 Antibody - Images



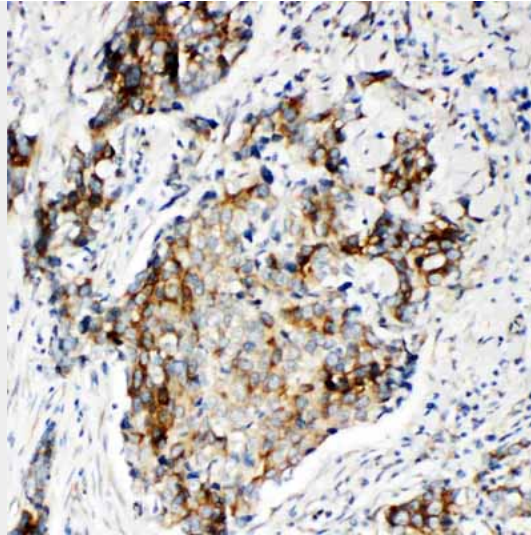
Anti-Matrilin 2 antibody, ABO11229, Western blotting
Recombinant Protein Detection Source: E.coli derived -recombinant human MATN2, 35.8KD(162aa tag+Q803-R956)
Lane 1: Recombinant Human MATN2 Protein 10ng
Lane 2: Recombinant Human MATN2 Protein 5ng
Lane 3: Recombinant Human MATN2 Protein 2.5ng



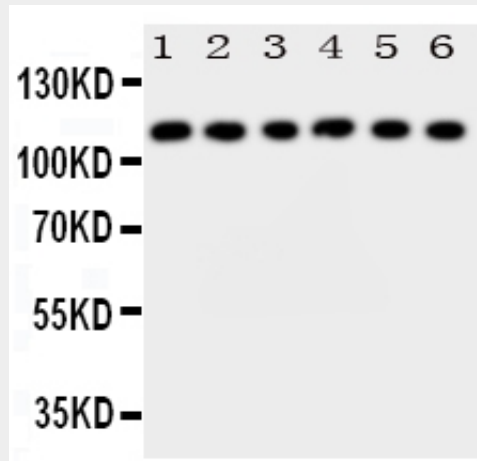
Anti-Matrilin 2 antibody, ABO11229, IHC(P) IHC(P): Rat Testis Tissue



Anti-Matrilin 2 antibody, ABO11229, IHC(P) IHC(P): Human Mammary Cancer Tissue



Anti-Matrilin 2 antibody, ABO11229, IHC(P)IHC(P): Human Mammary Cancer Tissue



Anti-Matrilin 2 antibody, ABO11229, Western blotting
Lane 1: Rat Brain Tissue Lysate
Lane 2: Rat Testis Tissue Lysate
Lane 3: Rat Ovary Tissue Lysate
Lane 4: A549 Cell Lysate
Lane 5: SKOV Cell Lysate
Lane 6: SMMC Cell Lysate

Anti-Matrilin 2 Antibody - Background

MATN2(Matrilin-2) is a protein that in humans is encoded by the MATN2 gene. This gene encodes a member of the von Willebrand factor A domain containing protein family. This family of proteins is thought to be involved in the formation of filamentous networks in the extracellular matrices of various tissues. This protein contains five von Willebrand factor A domains. By fluorescence in situ hybridization, Muratoglu et al.(2000) mapped the MATN2 gene to chromosome 8q22. The specific function of this gene has not yet been determined. Two transcript variants encoding different isoforms have been found for this gene.