

Anti-KLF5 Antibody
Catalog # ABO11195**Specification**

Anti-KLF5 Antibody - Product Information

Application	WB
Primary Accession	Q13887
Host	Rabbit
Reactivity	Human, Mouse, Rat
Clonality	Polyclonal
Format	Lyophilized

Description

Rabbit IgG polyclonal antibody for Krueppel-like factor 5(KLF5) detection. Tested with WB in Human;Mouse;Rat.

Reconstitution

Add 0.2ml of distilled water will yield a concentration of 500ug/ml.

Anti-KLF5 Antibody - Additional Information

Gene ID 688

Other Names

Krueppel-like factor 5, Basic transcription element-binding protein 2, BTE-binding protein 2, Colon krueppel-like factor, GC-box-binding protein 2, Intestinal-enriched krueppel-like factor, Transcription factor BTEB2, KLF5, BTEB2, CKLF, IKLF

Calculated MW

50792 MW KDa

Application Details

Western blot, 0.1-0.5 µg/ml, Human, Mouse, Rat

Subcellular Localization

Nucleus .

Tissue Specificity

Expressed only in testis and placenta.

Protein Name

Krueppel-like factor 5

Contents

Each vial contains 5mg BSA, 0.9mg NaCl, 0.2mg Na₂HPO₄, 0.05mg Thimerosal, 0.05mg NaN₃.

Immunogen

A synthetic peptide corresponding to a sequence in the middle region of human KLF5(109-126aa HKKYRRDSASVVDQFFTD), identical to the related rat and mouse sequences.

Purification

Immunogen affinity purified.

Cross Reactivity

No cross reactivity with other proteins

Storage

At -20°C for one year. After r°Constitution, at 4°C for one month. It°Can also be aliquotted and stored frozen at -20°C for a longer time.Avoid repeated freezing and thawing.

Sequence Similarities

Belongs to the krueppel C2H2-type zinc-finger protein family.

Anti-KLF5 Antibody - Protein Information

Name KLF5

Synonyms BTEB2, CKLF, IKLF

Function

Transcription factor that binds to GC box promoter elements. Activates the transcription of these genes.

Cellular Location

Nucleus.

Tissue Location

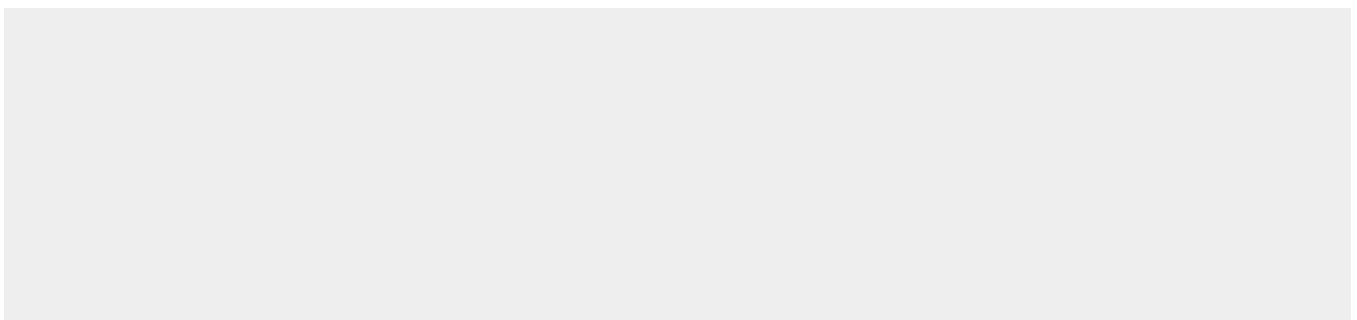
Expressed only in testis and placenta.

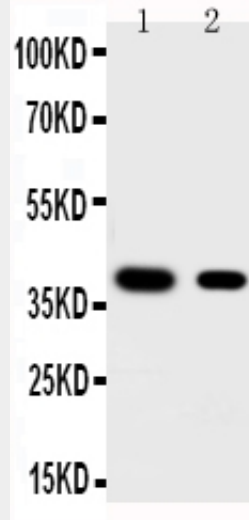
Anti-KLF5 Antibody - Protocols

Provided below are standard protocols that you may find useful for product applications.

- [Western Blot](#)
- [Blocking Peptides](#)
- [Dot Blot](#)
- [Immunohistochemistry](#)
- [Immunofluorescence](#)
- [Immunoprecipitation](#)
- [Flow Cytometry](#)
- [Cell Culture](#)

Anti-KLF5 Antibody - Images





Anti-KLF5 antibody, ABO11195, Western blotting Lane 1: HELA Cell Lysate Lane 2: MCF-7 Cell Lysate

Anti-KLF5 Antibody - Background

KLF5 (Krueppel-like factor 5) is a protein that in humans is encoded by the KLF5 gene. It is also known as BASIC TRANSCRIPTION ELEMENT-BINDING PROTEIN 2 or BTEB2. This gene encodes a member of the Kruppel-like factor subfamily of zinc finger proteins. Suske et al. (2005) stated that the human KLF5 gene maps to chromosome 13q21.33, and the mouse Klf5 gene to chromosome 14E2.1. Sogawa et al. (1993) isolated a cDNA encoding BTEB2. The predicted 219-amino acid protein contains 3 consecutive zinc finger motifs near the C terminus. The zinc finger domains were 59% and 64% identical to those of Sp1 (189906) and BTEB1, respectively. Both BTEB2 and Sp1 have a short basic region preceding the zinc finger motifs that may play an auxiliary role in DNA binding. The N-terminal region of BTEB2 is proline rich. Recombinant BTEB2 protein and Sp1 showed very similar DNA-binding specificity in vitro. When expressed in mammalian cells, BTEB2 activated the transcription of a reporter gene fused to a GC box-containing promoter. Sogawa et al. (1993) also identified the rat BTEB2 homolog. Northern blot analysis of rat tissues revealed that BTEB2 is expressed only in the testis and placenta.