

Anti-KLF3 Antibody
Catalog # ABO11194**Specification**

Anti-KLF3 Antibody - Product Information

Application	WB
Primary Accession	P57682
Host	Rabbit
Reactivity	Human, Mouse, Rat
Clonality	Polyclonal
Format	Lyophilized

Description

Rabbit IgG polyclonal antibody for Krueppel-like factor 3(KLF3) detection. Tested with WB in Human;Mouse;Rat.

Reconstitution

Add 0.2ml of distilled water will yield a concentration of 500ug/ml.

Anti-KLF3 Antibody - Additional Information

Gene ID 51274

Other Names

Krueppel-like factor 3, Basic krueppel-like factor, CACCC-box-binding protein BKLF, TEF-2, KLF3, BKLF

Calculated MW

38829 MW KDa

Application Details

Western blot, 0.1-0.5 µg/ml, Human, Rat, Mouse

Subcellular Localization

Nucleus .

Protein Name

Krueppel-like factor 3

Contents

Each vial contains 5mg BSA, 0.9mg NaCl, 0.2mg Na₂HPO₄, 0.05mg Thimerosal, 0.05mg NaN₃.

Immunogen

A synthetic peptide corresponding to a sequence at the N-terminus of human KLF3(20-34aa SYPSNYMESMKPNKY), different from the related rat sequence by one amino acid, and from the related mouse sequence by two amino acids.

Purification

Immunogen affinity purified.

Cross Reactivity

No cross reactivity with other proteins

Storage

At -20°C for one year. After reconstitution, at 4°C for one month. It can also be aliquotted and stored frozen at -20°C for a longer time. Avoid repeated freezing and thawing.

Sequence Similarities

Belongs to the krueppel C2H2-type zinc-finger protein family.

Anti-KLF3 Antibody - Protein Information

Name KLF3

Synonyms BKLF

Function

Binds to the CACCC box of erythroid cell-expressed genes. May play a role in hematopoiesis (By similarity).

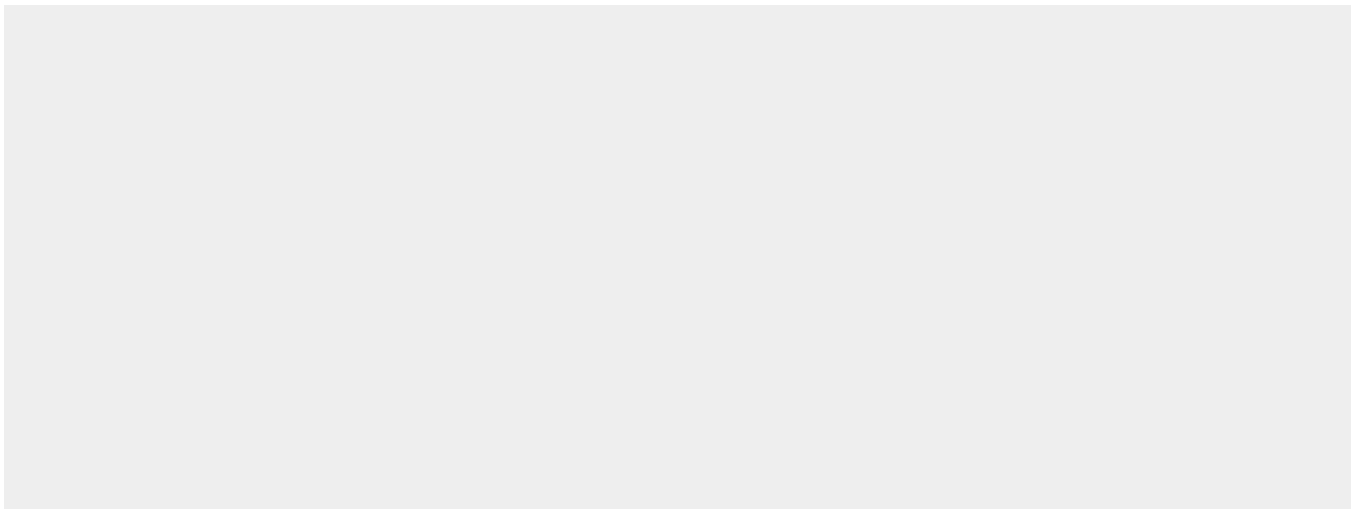
Cellular Location

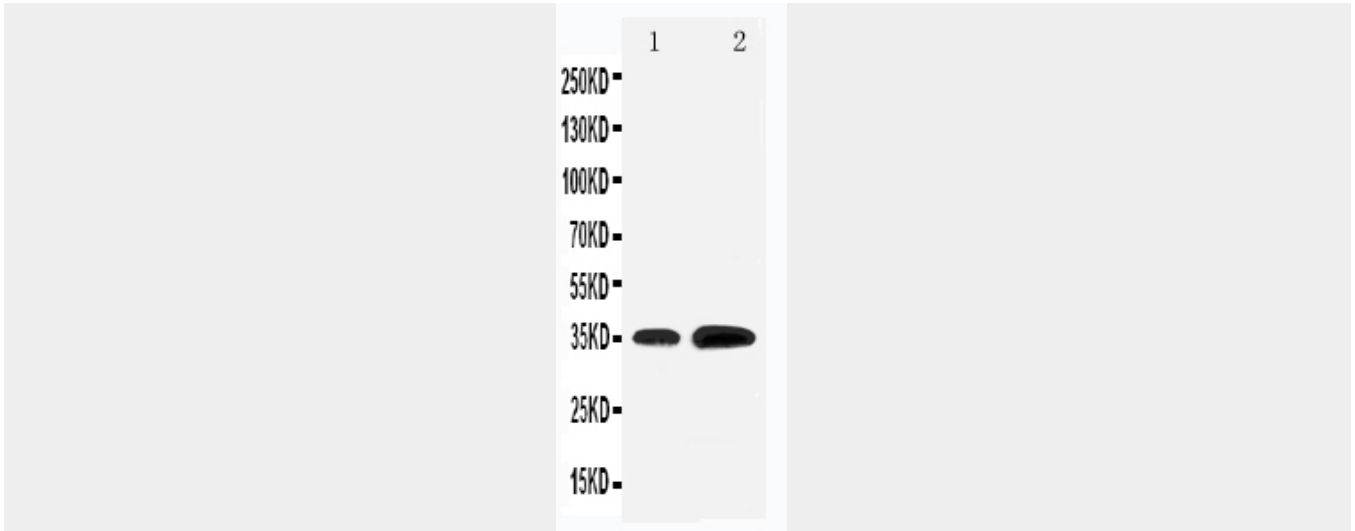
Nucleus.

Anti-KLF3 Antibody - Protocols

Provided below are standard protocols that you may find useful for product applications.

- [Western Blot](#)
- [Blocking Peptides](#)
- [Dot Blot](#)
- [Immunohistochemistry](#)
- [Immunofluorescence](#)
- [Immunoprecipitation](#)
- [Flow Cytometry](#)
- [Cell Culture](#)

Anti-KLF3 Antibody - Images



Anti-KLF3 antibody, ABO11194, Western blotting Lane 1: Rat Testis Tissue Lysate Lane 2: HELA Cell Lysate

Anti-KLF3 Antibody - Background

KLF3 (Krueppel-like factor 3) is a protein that in humans is encoded by the KLF3 gene. It is also known as BKLF (Basic kruppel-like factor). KLF3 is a member of the Krüppel-like factors family of transcription factors. KLF3 primarily represses transcription through the transcriptional corepressor C-terminal binding protein (CtBP). Suske et al. (2005) stated that the human KLF3 gene maps to chromosome 4p14, and the mouse Klf3 gene maps to chromosome 5C3.3. Suske et al. (2005) stated that the human and mouse KLF3 proteins contain 345 and 344 amino acids, respectively. Both have a characteristic zinc finger domain, but lack the N-terminal buttonhead box found in related SP transcription factors. The repression mediated through KLF3 is also partially dependent on the sumoylation of its K10 and K197. Within KLF3's C-terminal, which is highly conserved throughout the KLF family, resides three C2H2 zinc fingers that preferentially bind the site NRG GNG NGR.