

**Anti-ABCG1 Antibody**  
Catalog # ABO11175**Specification**

---

**Anti-ABCG1 Antibody - Product Information**

Application	<b>WB</b>
Primary Accession	<a href="#">P45844</a>
Host	<b>Rabbit</b>
Reactivity	<b>Human, Mouse, Rat</b>
Clonality	<b>Polyclonal</b>
Format	<b>Lyophilized</b>

**Description**

Rabbit IgG polyclonal antibody for ATP-binding cassette sub-family G member 1(ABCG1) detection. Tested with WB in Human;Mouse;Rat.

**Reconstitution**

Add 0.2ml of distilled water will yield a concentration of 500ug/ml.

**Anti-ABCG1 Antibody - Additional Information**

**Gene ID** 9619

**Other Names**

ATP-binding cassette sub-family G member 1, ATP-binding cassette transporter 8, White protein homolog, ABCG1, ABC8, WHT1

**Calculated MW**

75592 MW KDa

**Application Details**

Western blot, 0.1-0.5 µg/ml, Human, Mouse, Rat<br>

**Subcellular Localization**

Endoplasmic reticulum membrane ; Multi-pass membrane protein . Golgi apparatus membrane ; Multi-pass membrane protein . Predominantly localized in the intracellular compartments mainly associated with the endoplasmic reticulum (ER) and Golgi membranes.

**Tissue Specificity**

Expressed in several tissues. Expressed in macrophages; expression is increased in macrophages from patients with Tangier disease. .

**Protein Name**

ATP-binding cassette sub-family G member 1

**Contents**

Each vial contains 5mg BSA, 0.9mg NaCl, 0.2mg Na<sub>2</sub>HPO<sub>4</sub>, 0.05mg Thimerosal, 0.05mg NaN<sub>3</sub>.

**Immunogen**

A synthetic peptide corresponding to a sequence at the C-terminus of human ABCG1(627-647aa

ETCHFQKSEAILRELDVENAK), identical to the related rat and mouse sequences.

#### **Purification**

Immunogen affinity purified.

#### **Cross Reactivity**

No cross reactivity with other proteins

#### **Storage**

**At -20°C for one year. After reconstitution, at 4°C for one month. It can also be aliquotted and stored frozen at -20°C for a longer time. Avoid repeated freezing and thawing.**

#### **Sequence Similarities**

Belongs to the ABC transporter superfamily. ABCG family. Eye pigment precursor importer (TC 3.A.1.204) subfamily.

### **Anti-ABCG1 Antibody - Protein Information**

**Name** ABCG1 ([HGNC:73](#))

**Synonyms** ABC8, WHT1

#### **Function**

Catalyzes the efflux of phospholipids such as sphingomyelin, cholesterol and its oxygenated derivatives like 7beta- hydroxycholesterol and this transport is coupled to hydrolysis of ATP (PubMed:[17408620](http://www.uniprot.org/citations/17408620)), (PubMed:[24576892](http://www.uniprot.org/citations/24576892)). The lipid efflux is ALB-dependent (PubMed:[16702602](http://www.uniprot.org/citations/16702602)). Is an active component of the macrophage lipid export complex. Could also be involved in intracellular lipid transport processes. The role in cellular lipid homeostasis may not be limited to macrophages. Prevents cell death by transporting cytotoxic 7beta- hydroxycholesterol (PubMed:[17408620](http://www.uniprot.org/citations/17408620)).

#### **Cellular Location**

Endoplasmic reticulum membrane; Multi-pass membrane protein. Golgi apparatus membrane; Multi-pass membrane protein. Cell membrane Note=Predominantly localized in the intracellular compartments mainly associated with the endoplasmic reticulum (ER) and Golgi membranes

#### **Tissue Location**

Expressed in several tissues. Expressed in macrophages; expression is increased in macrophages from patients with Tangier disease.

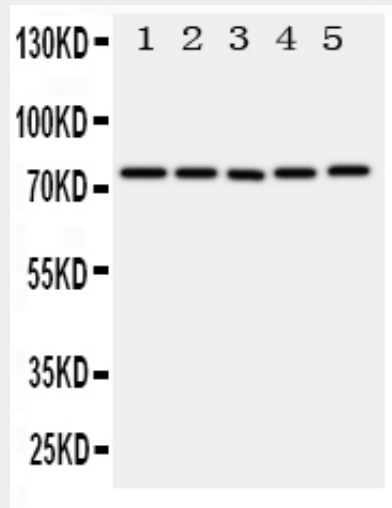
### **Anti-ABCG1 Antibody - Protocols**

Provided below are standard protocols that you may find useful for product applications.

- [Western Blot](#)
- [Blocking Peptides](#)
- [Dot Blot](#)
- [Immunohistochemistry](#)
- [Immunofluorescence](#)

- [Immunoprecipitation](#)
- [Flow Cytometry](#)
- [Cell Culture](#)

### Anti-ABCG1 Antibody - Images



Anti-ABCG1 antibody, ABO11175, Western blotting All lanes: Anti ABCG1 (ABO11175) at 0.5ug/ml Lane 1: U87 Whole Cell Lysate at 40ug Lane 2: SMMC Whole Cell Lysate at 40ug Lane 3: HELA Whole Cell Lysate at 40ug Lane 4: COLO320 Whole Cell Lysate at 40ug Lane 5: MCF-7 Whole Cell Lysate at 40ug Predicted bind size: 75KD Observed bind size: 75KD

### Anti-ABCG1 Antibody - Background

ABCG1 (Atp-binding cassette, subfamily g, member 1) also known as ABC8, ABC TRANSPORTER 8 or WHITE, DROSOPHILA, HOMOLOG OF, is a protein that in humans is encoded by the ABCG1 gene. ABCG1 is a regulator of macrophage cholesterol and phospholipid transport. The protein encoded by this gene is a member of the superfamily of ATP-binding cassette (ABC) transporters. The ABCG1 gene is mapped on 21q22.3. This protein is a member of the White subfamily. It is involved in macrophage cholesterol and phospholipids transport, and may regulate cellular lipid homeostasis in other cell types. ABCG1 is induced in monocyte-derived macrophages during cholesterol influx mediated by acetylated low-density lipoprotein. Inhibition of ABCG1 protein expression using an antisense strategy resulted in reduced HDL3-dependent efflux of cholesterol and choline-phospholipids. In macrophages, silencing of GPS2 by RNA interference reduced ABCG1 expression and diminished ABCG1-mediated cholesterol efflux.