

**Anti-FES Antibody**  
Catalog # ABO11163**Specification****Anti-FES Antibody - Product Information**

Application	WB
Primary Accession	<a href="#">P07332</a>
Host	Rabbit
Reactivity	Human, Mouse, Rat
Clonality	Polyclonal
Format	Lyophilized

**Description**

Rabbit IgG polyclonal antibody for Tyrosine-protein kinase Fes/Fps(FES) detection. Tested with WB in Human;Mouse;Rat.

**Reconstitution**

Add 0.2ml of distilled water will yield a concentration of 500ug/ml.

**Anti-FES Antibody - Additional Information**

**Gene ID** 2242

**Other Names**

Tyrosine-protein kinase Fes/Fps, 2.7.10.2, Feline sarcoma/Fujinami avian sarcoma oncogene homolog, Proto-oncogene c-Fes, Proto-oncogene c-Fps, p93c-fes, FES, FPS

**Calculated MW**

93497 MW KDa

**Application Details**

Western blot, 0.1-0.5 µg/ml, Human, Mouse, Rat

**Subcellular Localization**

Cytoplasm, cytosol. Cytoplasm, cytoskeleton. Cell membrane; Peripheral membrane protein; Cytoplasmic side. Cytoplasmic vesicle. Golgi apparatus. Cell junction, focal adhesion. Distributed throughout the cytosol when the kinase is not activated. Association with microtubules requires activation of the kinase activity. Shuttles between focal adhesions and cell-cell contacts in epithelial cells. Recruited to the lateral cell membrane in polarized epithelial cells by interaction with phosphorylated EZR. Detected at tubular membrane structures in the cytoplasm and at the cell periphery.

**Tissue Specificity**

Widely expressed. Detected in adult colon epithelium. .

**Protein Name**

Tyrosine-protein kinase Fes/Fps

**Contents**

Each vial contains 5mg BSA, 0.9mg NaCl, 0.2mg Na<sub>2</sub>HPO<sub>4</sub>, 0.05mg Thimerosal, 0.05mg NaN<sub>3</sub>.

**Immunogen**

A synthetic peptide corresponding to a sequence at the C-terminus of human FES(644-663aa FLTFLRTEGARLRVKLLQM), identical to the related mouse and rat sequences.

**Purification**

Immunogen affinity purified.

**Cross Reactivity**

No cross reactivity with other proteins

**Storage**

**At -20°C for one year. After r°Constitution, at 4°C for one month. It°Can also be aliquotted and stored frozen at -20°C for a longer time.Avoid repeated freezing and thawing.**

**Sequence Similarities**

Belongs to the protein kinase superfamily. Tyr protein kinase family. Fes/fps subfamily.

**Anti-FES Antibody - Protein Information****Name** FES**Synonyms** FPS**Function**

Tyrosine-protein kinase that acts downstream of cell surface receptors and plays a role in the regulation of the actin cytoskeleton, microtubule assembly, cell attachment and cell spreading. Plays a role in FCER1 (high affinity immunoglobulin epsilon receptor)-mediated signaling in mast cells. Acts down-stream of the activated FCER1 receptor and the mast/stem cell growth factor receptor KIT. Plays a role in the regulation of mast cell degranulation. Plays a role in the regulation of cell differentiation and promotes neurite outgrowth in response to NGF signaling. Plays a role in cell scattering and cell migration in response to HGF-induced activation of EZR. Phosphorylates BCR and down-regulates BCR kinase activity. Phosphorylates HCLS1/HS1, PECAM1, STAT3 and TRIM28.

**Cellular Location**

Cytoplasm, cytosol. Cytoplasm, cytoskeleton. Cell membrane; Peripheral membrane protein; Cytoplasmic side. Cytoplasmic vesicle. Golgi apparatus. Cell junction, focal adhesion  
Note=Distributed throughout the cytosol when the kinase is not activated. Association with microtubules requires activation of the kinase activity. Shuttles between focal adhesions and cell-cell contacts in epithelial cells. Recruited to the lateral cell membrane in polarized epithelial cells by interaction with phosphorylated EZR Detected at tubular membrane structures in the cytoplasm and at the cell periphery

**Tissue Location**

Widely expressed. Detected in adult colon epithelium (at protein level) (PubMed:16455651, PubMed:19051325) Expressed in melanocytes (at protein level) (PubMed:28463229)

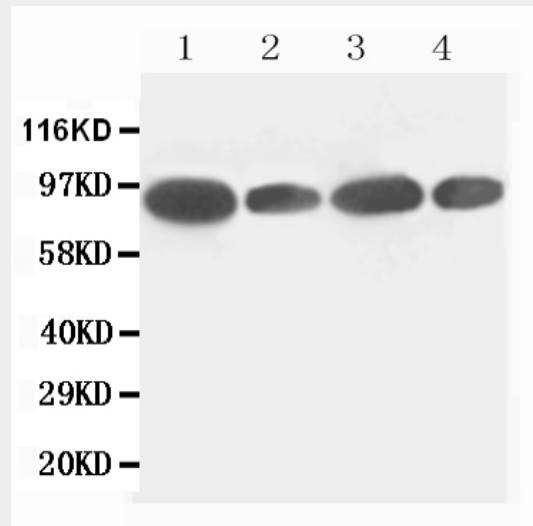
**Anti-FES Antibody - Protocols**

Provided below are standard protocols that you may find useful for product applications.

- [Western Blot](#)

- [Blocking Peptides](#)
- [Dot Blot](#)
- [Immunohistochemistry](#)
- [Immunofluorescence](#)
- [Immunoprecipitation](#)
- [Flow Cytometry](#)
- [Cell Culture](#)

### Anti-FES Antibody - Images



Anti-FES antibody, ABO11163, All Western blotting  
All lanes: Anti-FES(ABO11163) at 0.5ug/ml  
Lane 1: HELA Whole Cell Lysate at 40ug  
Lane 2: 293T Whole Cell Lysate at 40ug  
Lane 3: SKOV Whole Cell Lysate at 40ug  
Lane 4: A549 Whole Cell Lysate at 40ug  
Predicted bind size: 93KD  
Observed bind size: 93KD

### Anti-FES Antibody - Background

FES(feline sarcoma oncogene) is an enzyme that in humans is encoded by the FES gene, also known as Proto-oncogene tyrosine-protein kinase Fes/Fps, Feline sarcoma/Fujinami avian sarcoma oncogene homolog, Proto-oncogene c-Fes, Proto-oncogene c-Fps, p93c-fes c-fes/fps protein, FPS, Oncogene FES, feline sarcoma virus, FPS. This gene encodes the human cellular counterpart of a feline sarcoma retrovirus protein with transforming capabilities. Non-onc intervening sequences were present in the human counterpart. The gene product has tyrosine-specific protein kinase activity and that activity is required for maintenance of cellular transformation. Its chromosomal location has linked it to a specific translocation event identified in patients with acute promyelocytic leukemia, but it is also involved in normal hematopoiesis. A truncated transcript has been identified that is generated utilizing a start site in one of the far downstream exons but a protein product associated with this transcript has not been identified.