

Anti-HYAL2 Antibody
Catalog # ABO11125

Specification

Anti-HYAL2 Antibody - Product Information

| | |
|-------------------|------------------------|
| Application | WB |
| Primary Accession | Q12891 |
| Host | Rabbit |
| Reactivity | Human, Mouse, Rat |
| Clonality | Polyclonal |
| Format | Lyophilized |

Description

Rabbit IgG polyclonal antibody for Hyaluronidase-2(HYAL2) detection. Tested with WB in Human;Mouse;Rat. .

Reconstitution

Add 0.2ml of distilled water will yield a concentration of 500ug/ml.

Anti-HYAL2 Antibody - Additional Information

Gene ID 8692

Other Names

Hyaluronidase-2, Hyal-2, 3.2.1.35, Hyaluronoglucosaminidase-2, Lung carcinoma protein 2, LuCa-2, HYAL2, LUCA2

Calculated MW

53860 MW KDa

Application Details

Western blot, 0.1-0.5 µg/ml, Human, Rat, Mouse

Subcellular Localization

Cell membrane ; Lipid-anchor, GPI-anchor .

Tissue Specificity

Widely expressed. No expression detected in adult brain. .

Protein Name

Hyaluronidase-2(Hyal-2)

Contents

Each vial contains 5mg BSA, 0.9mg NaCl, 0.2mg Na₂HPO₄, 0.05mg Thimerosal, 0.05mg NaN₃.

Immunogen

A synthetic peptide corresponding to a sequence at the C-terminus of human HYAL2(142-157aa VRNWQDKDVYRRSLRQ), different from the related mouse and rat sequences by three amino acids.

Purification

Immunogen affinity purified.

Cross Reactivity

No cross reactivity with other proteins

Storage

At -20°C for one year. After reconstitution, at 4°C for one month. It can also be aliquotted and stored frozen at -20°C for a longer time. Avoid repeated freezing and thawing.

Sequence Similarities

Belongs to the glycosyl hydrolase 56 family.

Anti-HYAL2 Antibody - Protein Information

Name HYAL2

Synonyms LUCA2

Function

Hydrolyzes high molecular weight hyaluronic acid to produce an intermediate-sized product which is further hydrolyzed by sperm hyaluronidase to give small oligosaccharides. Displays very low levels of activity. Associates with and negatively regulates MST1R.

Cellular Location

Cell membrane; Lipid-anchor, GPI-anchor

Tissue Location

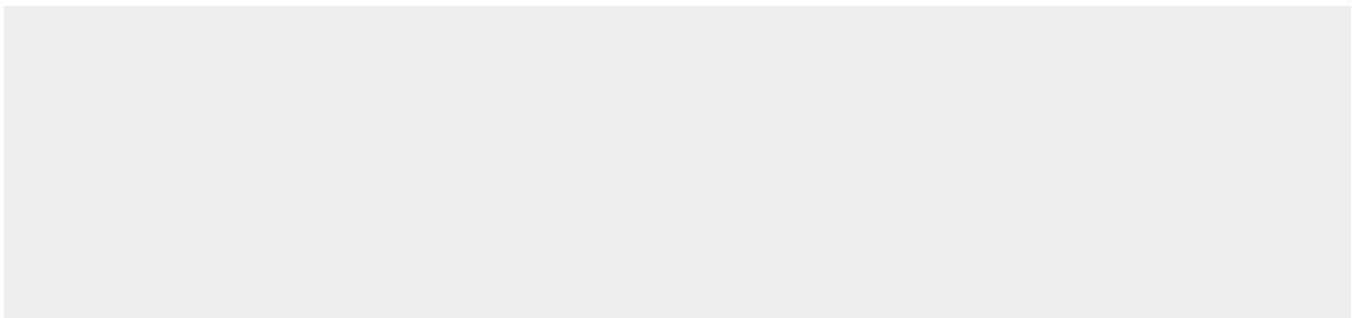
Widely expressed. No expression detected in adult brain.

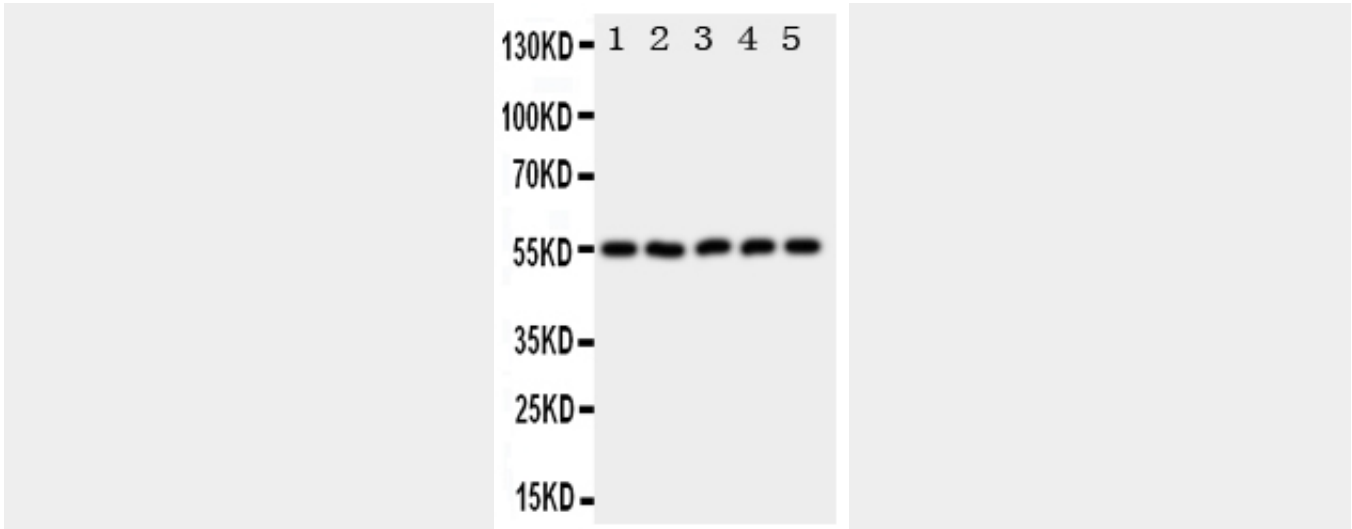
Anti-HYAL2 Antibody - Protocols

Provided below are standard protocols that you may find useful for product applications.

- [Western Blot](#)
- [Blocking Peptides](#)
- [Dot Blot](#)
- [Immunohistochemistry](#)
- [Immunofluorescence](#)
- [Immunoprecipitation](#)
- [Flow Cytometry](#)
- [Cell Culture](#)

Anti-HYAL2 Antibody - Images





Anti-HYAL2 antibody, ABO11125, Western blotting All lanes: Anti HYAL2 (ABO11125) at 0.5ug/ml Lane 1: HELA Whole Cell Lysate at 40ug Lane 2: SMMC Whole Cell Lysate at 40ug Lane 3: COLO320 Whole Cell Lysate at 40ug Lane 4: MCF-7 Whole Cell Lysate at 40ug Lane 5: HT1080 Whole Cell Lysate at 40ug Predicted bind size: 54KD Observed bind size: 54KD

Anti-HYAL2 Antibody - Background

HYAL2(hyaluronoglucosaminidase 2) also known as hyaluronidase 2, LuCa-2, is an enzyme that in humans is encoded by the HYAL2 gene. HYAL2 cDNAs encode a preprotein with an N-terminal signal peptide. Northern blot analysis indicated that HYAL2 was expressed in all human tissues tested except adult brain, and Western blot analysis detected Hyal2 protein in all mouse tissues examined except adult brain. The HYAL2 gene is mapped on 3p21.31. HYAL2 is a glycosylphosphatidylinositol(GPI)-anchored protein on the cell surface and serves as a receptor for entry into the cell of the jaagsiekte sheep retrovirus(JSRV). The findings of Rai et al.(2001) that HYAL2 is a GPI-anchored protein on the cell surface showed that GFP would likely be cleaved from HYAL2 during GPI addition, leaving HYAL2 on the cell surface and resulting in GFP transit to the lysosome for degradation.