

**Anti-SSR3 Antibody**  
Catalog # ABO11105

**Specification**

**Anti-SSR3 Antibody - Product Information**

Application	<b>WB, IHC</b>
Primary Accession	<a href="#">O9UNL2</a>
Host	<b>Rabbit</b>
Reactivity	<b>Human, Mouse, Rat</b>
Clonality	<b>Polyclonal</b>
Format	<b>Lyophilized</b>

**Description**

Rabbit IgG polyclonal antibody for Translocon-associated protein subunit gamma(SSR3) detection. Tested with WB, IHC-P, ICC in Human;Mouse;Rat.

**Reconstitution**

Add 0.2ml of distilled water will yield a concentration of 500ug/ml.

**Anti-SSR3 Antibody - Additional Information**

**Gene ID** 6747

**Other Names**

Translocon-associated protein subunit gamma, TRAP-gamma, Signal sequence receptor subunit gamma, SSR-gamma, SSR3, TRAPG

**Calculated MW**

21080 MW KDa

**Application Details**

Immunocytochemistry , 0.5-1 µg/ml, Human, Mouse,  
Rat<br>Immunohistochemistry(Paraffin-embedded Section), 0.5-1 µg/ml, Human, Mouse, Rat, By  
Heat<br>Western blot, 0.1-0.5 µg/ml, Human, Rat, Mouse<br>

**Subcellular Localization**

Endoplasmic reticulum membrane; Multi-pass membrane protein.

**Protein Name**

Translocon-associated protein subunit gamma(TRAP-gamma)

**Contents**

Each vial contains 5mg BSA, 0.9mg NaCl, 0.2mg Na<sub>2</sub>HPO<sub>4</sub>, 0.05mg Thimerosal, 0.05mg NaN<sub>3</sub>.

**Immunogen**

A synthetic peptide corresponding to a sequence at the N-terminus of human SSR3(8-23aa KQQSEEDLLLQDFSRN), identical to the related rat and mouse sequences.

**Purification**

Immunogen affinity purified.

### Cross Reactivity

No cross reactivity with other proteins

### Storage

At -20°C for one year. After reconstitution, at 4°C for one month. It can also be aliquotted and stored frozen at -20°C for a longer time. Avoid repeated freezing and thawing.

## Anti-SSR3 Antibody - Protein Information

**Name** SSR3

**Synonyms** TRAPG

### Function

TRAP proteins are part of a complex whose function is to bind calcium to the ER membrane and thereby regulate the retention of ER resident proteins.

### Cellular Location

Endoplasmic reticulum membrane; Multi-pass membrane protein

## Anti-SSR3 Antibody - Protocols

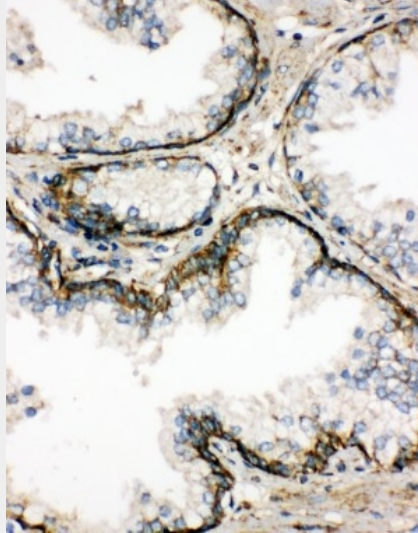
Provided below are standard protocols that you may find useful for product applications.

- [Western Blot](#)
- [Blocking Peptides](#)
- [Dot Blot](#)
- [Immunohistochemistry](#)
- [Immunofluorescence](#)
- [Immunoprecipitation](#)
- [Flow Cytometry](#)
- [Cell Culture](#)

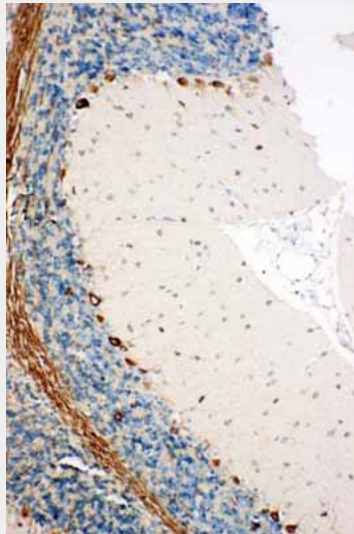
## Anti-SSR3 Antibody - Images



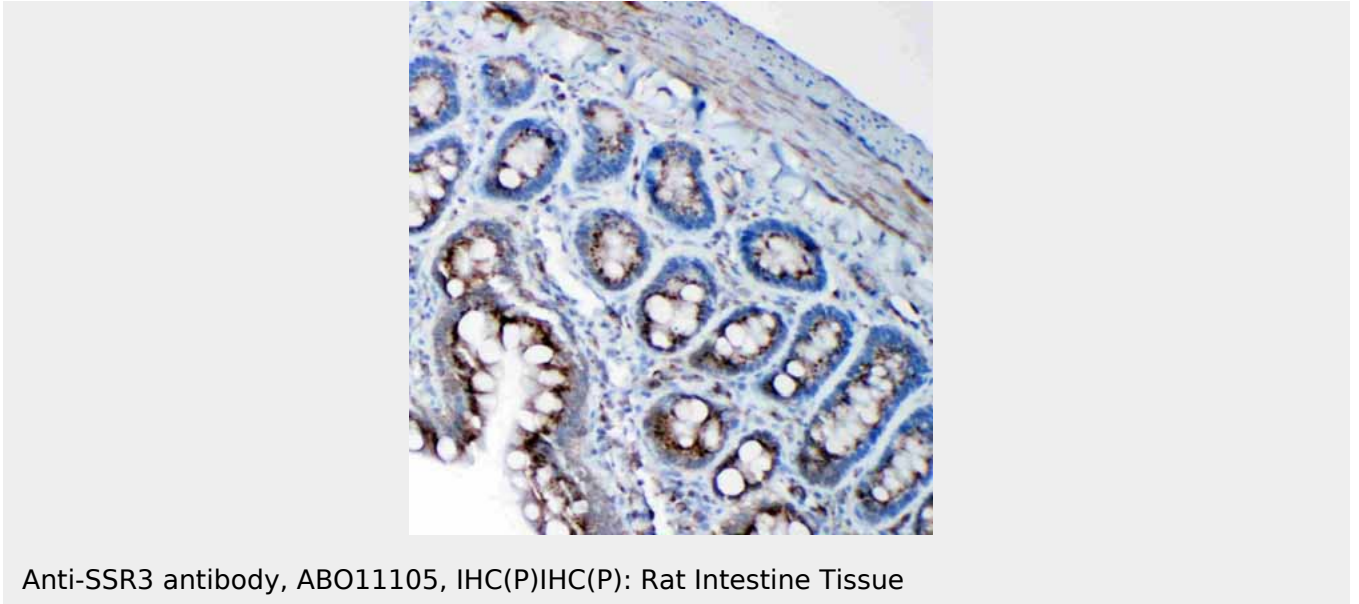
Anti-SSR3 antibody, ABO11105, Western blotting All lanes: Anti SSR3 (ABO11105) at 0.5ug/ml Lane 1: Rat Liver Tissue Lysate at 50ug Lane 2: Rat Spleen Tissue Lysate at 50ug Lane 3: A431 Whole Cell Lysate at 40ug Lane 4: HELA Whole Cell Lysate at 40ug Lane 5: U87 Whole Cell Lysate at 40ug Lane 6: SMMC Whole Cell Lysate at 40ug Predicted bind size: 21KD Observed bind size: 21KD



Anti-SSR3 antibody, ABO11105, IHC(P) IHC(P): Human Prostatic Cancer Tissue



Anti-SSR3 antibody, ABO11105, IHC(P) IHC(P): Rat Brain Tissue



### **Anti-SSR3 Antibody - Background**

SSR3(signal sequence receptor, gamma) is also known as TRAPG. By immunoaffinity chromatography, biochemical purification, peptide sequence analysis, and screening of a rat liver cDNA library, Hartmann et al.(1993) obtained a cDNA encoding Ssr3, which they termed Trap-gamma. The deduced 185-amino acid protein spans the membrane 4 times and is expressed as a 20-kD protein. Gross(2012) mapped the SSR3 gene to chromosome 3q25.31 based on an alignment of the SSR3 sequence with the genomic sequence(GRCh37). Hartmann et al.(1993) found that Ssr3 was associated in equal amounts with Ssr1, Ssr2, and Ssr4 in canine pancreatic microsomes.