

**Anti-LASP1 Antibody**  
Catalog # ABO11100

**Specification**

---

**Anti-LASP1 Antibody - Product Information**

Application	<b>WB, IHC</b>
Primary Accession	<a href="#">Q14847</a>
Host	<b>Rabbit</b>
Reactivity	<b>Human</b>
Clonality	<b>Polyclonal</b>
Format	<b>Lyophilized</b>

**Description**

Rabbit IgG polyclonal antibody for LIM and SH3 domain protein 1(LASP1) detection. Tested with WB, IHC-P in Human.

**Reconstitution**

Add 0.2ml of distilled water will yield a concentration of 500ug/ml.

**Anti-LASP1 Antibody - Additional Information**

**Gene ID** 3927

**Other Names**

LIM and SH3 domain protein 1, LASP-1, Metastatic lymph node gene 50 protein, MLN 50, LASP1, MLN50

**Calculated MW**

29717 MW KDa

**Application Details**

Immunohistochemistry(Paraffin-embedded Section), 0.5-1 µg/ml, Human, By Heat<br>Western blot, 0.1-0.5 µg/ml, Human<br>

**Subcellular Localization**

Cytoplasm, cell cortex . Cytoplasm, cytoskeleton . Associated with the F- actin rich cortical cytoskeleton. .

**Protein Name**

LIM and SH3 domain protein 1

**Contents**

Each vial contains 5mg BSA, 0.9mg NaCl, 0.2mg Na<sub>2</sub>HPO<sub>4</sub>, 0.05mg Thimerosal, 0.05mg NaN<sub>3</sub>.

**Immunogen**

A synthetic peptide corresponding to a sequence at the C-terminus of human LASP1(152-168aa YRRPLEQQPHHIPTSA).

**Purification**

Immunogen affinity purified.

### Cross Reactivity

No cross reactivity with other proteins

### Storage

At -20°C for one year. After reconstitution, at 4°C for one month. It can also be aliquotted and stored frozen at -20°C for a longer time. Avoid repeated freezing and thawing.

### Sequence Similarities

Contains 1 LIM zinc-binding domain.

## Anti-LASP1 Antibody - Protein Information

**Name** LASP1

**Synonyms** MLN50

### Function

Plays an important role in the regulation of dynamic actin- based, cytoskeletal activities. Agonist-dependent changes in LASP1 phosphorylation may also serve to regulate actin-associated ion transport activities, not only in the parietal cell but also in certain other F-actin-rich secretory epithelial cell types (By similarity).

### Cellular Location

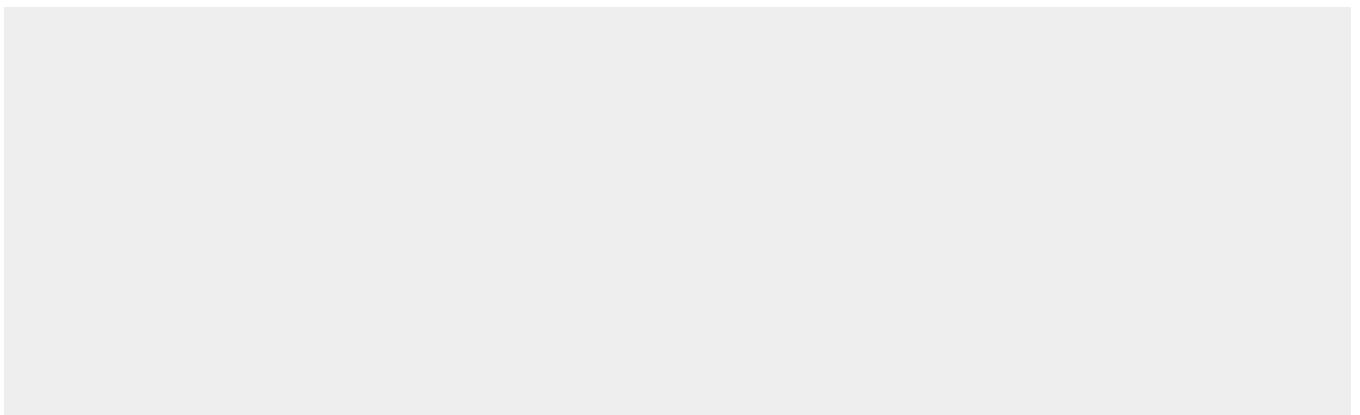
Cytoplasm, cell cortex. Cytoplasm, cytoskeleton. Note=Associated with the F-actin rich cortical cytoskeleton.

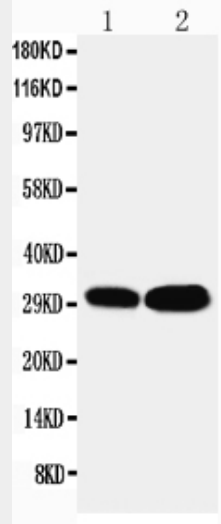
## Anti-LASP1 Antibody - Protocols

Provided below are standard protocols that you may find useful for product applications.

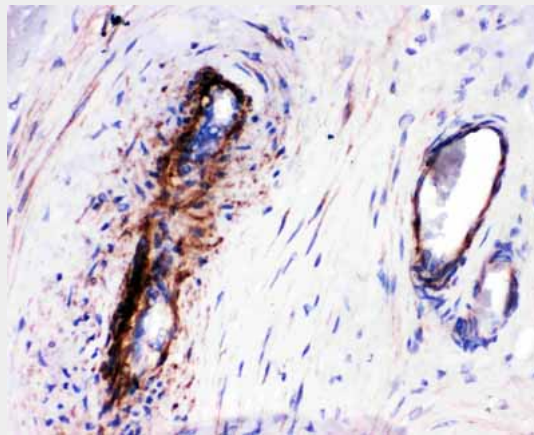
- [Western Blot](#)
- [Blocking Peptides](#)
- [Dot Blot](#)
- [Immunohistochemistry](#)
- [Immunofluorescence](#)
- [Immunoprecipitation](#)
- [Flow Cytometry](#)
- [Cell Culture](#)

## Anti-LASP1 Antibody - Images





Anti-LASP1 antibody, ABO11100, Western blotting Lane 1: HELA Cell Lysate Lane 2: MCF-7 Cell Lysate



Anti-LASP1 antibody, ABO11100, IHC(P) IHC(P): Human Placenta Tissue

### Anti-LASP1 Antibody - Background

LASP1 (LIM and SH3 domain protein 1), also known as LASP1, is a protein that in humans is encoded by the LASP1 gene. This gene encodes a member of a LIM protein subfamily which is characterized by a LIM motif and a domain of Src homology region 3. This protein functions as an actin-binding protein and possibly in cytoskeletal organization. LASP1 has been shown to interact with Zyxin. Tomasetto et al. (1995) mapped the LASP1 gene to chromosome 17q11-q21.3 by radioactive in situ hybridization. Northern blot analysis revealed that LASP1 mRNA was expressed at a basal level in all normal tissues examined and overexpressed in 8% of primary breast cancers. In most of these cancers, LASP1 and ERBB2 were simultaneously overexpressed.