

**Anti-SNAP23 Antibody**  
Catalog # ABO11081**Specification**

---

**Anti-SNAP23 Antibody - Product Information**

Application	WB, IHC, ICC
Primary Accession	<a href="#">O00161</a>
Host	Rabbit
Reactivity	Human, Mouse, Rat
Clonality	Polyclonal
Format	Lyophilized

**Description**

Rabbit IgG polyclonal antibody for Synaptosomal-associated protein 23(SNAP23) detection. Tested with WB, IHC-P, IHC-F, ICC in Human;Mouse;Rat.

**Reconstitution**

Add 0.2ml of distilled water will yield a concentration of 500ug/ml.

**Anti-SNAP23 Antibody - Additional Information**

**Gene ID** 8773

**Other Names**

Synaptosomal-associated protein 23, SNAP-23, Vesicle-membrane fusion protein SNAP-23, SNAP23

**Calculated MW**

23354 MW KDa

**Application Details**

Immunocytochemistry , 0.5-1 µg/ml, Human, -<br>Immunohistochemistry(Frozen Section), 0.5-1 µg/ml, Human, Mouse, Rat<br>Immunohistochemistry(Paraffin-embedded Section), 0.5-1 µg/ml, Human, Rat, Mouse, By Heat<br>Western blot, 0.1-0.5 µg/ml, Human, Rat, Mouse<br>

**Subcellular Localization**

Cell membrane; Peripheral membrane protein. Cell membrane; Lipid-anchor. Cell junction, synapse, synaptosome. Mainly localized to the plasma membrane.

**Tissue Specificity**

Ubiquitous. Highest levels where found in placenta.

**Protein Name**

Synaptosomal-associated protein 23(SNAP-23)

**Contents**

Each vial contains 5mg BSA, 0.9mg NaCl, 0.2mg Na<sub>2</sub>HPO<sub>4</sub>, 0.05mg Thimerosal, 0.05mg NaN<sub>3</sub>.

**Immunogen**

A synthetic peptide corresponding to a sequence at the C-terminus of human SNAP23(192-211aa DTNRDRIDIANARAKKLIDS), different from the related rat and mouse sequences by three amino

acids.

**Purification**

Immunogen affinity purified.

**Cross Reactivity**

No cross reactivity with other proteins

**Storage**

**At -20°C for one year. After reconstitution, at 4°C for one month. It can also be aliquotted and stored frozen at -20°C for a longer time. Avoid repeated freezing and thawing.**

**Sequence Similarities**

Belongs to the SNAP-25 family.

**Anti-SNAP23 Antibody - Protein Information****Name** SNAP23**Function**

Essential component of the high affinity receptor for the general membrane fusion machinery and an important regulator of transport vesicle docking and fusion.

**Cellular Location**

Cell membrane; Peripheral membrane protein. Cell membrane; Lipid-anchor. Synapse, synaptosome. Note=Mainly localized to the plasma membrane

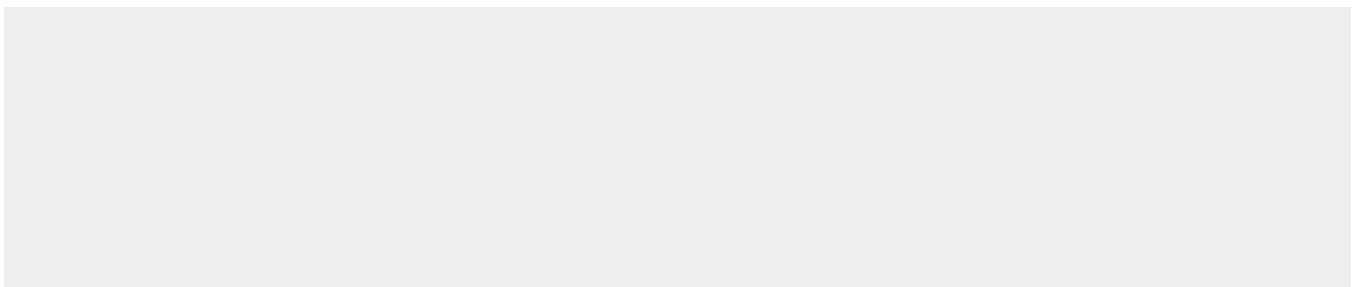
**Tissue Location**

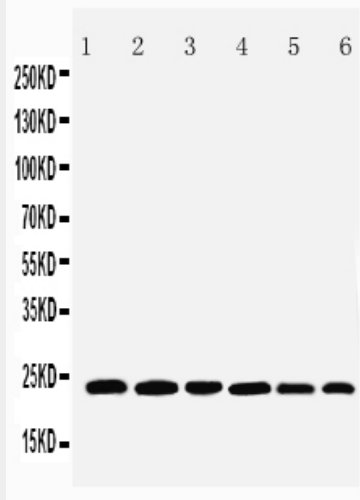
Ubiquitous. Highest levels where found in placenta.

**Anti-SNAP23 Antibody - Protocols**

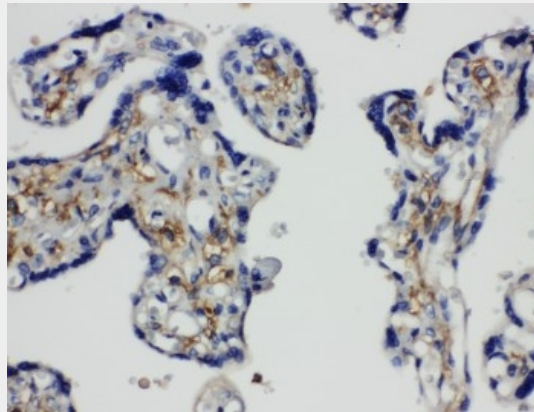
Provided below are standard protocols that you may find useful for product applications.

- [Western Blot](#)
- [Blocking Peptides](#)
- [Dot Blot](#)
- [Immunohistochemistry](#)
- [Immunofluorescence](#)
- [Immunoprecipitation](#)
- [Flow Cytometry](#)
- [Cell Culture](#)

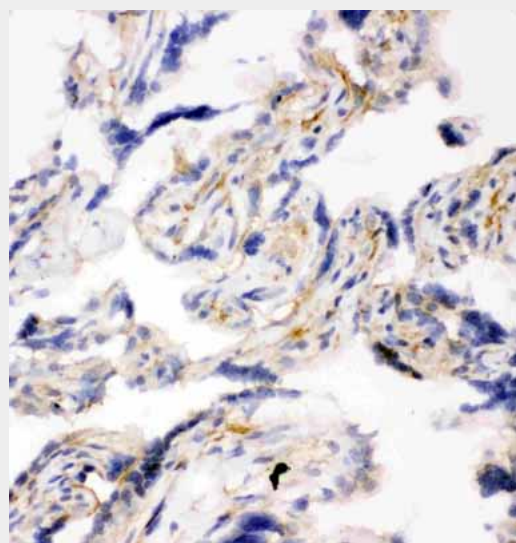
**Anti-SNAP23 Antibody - Images**



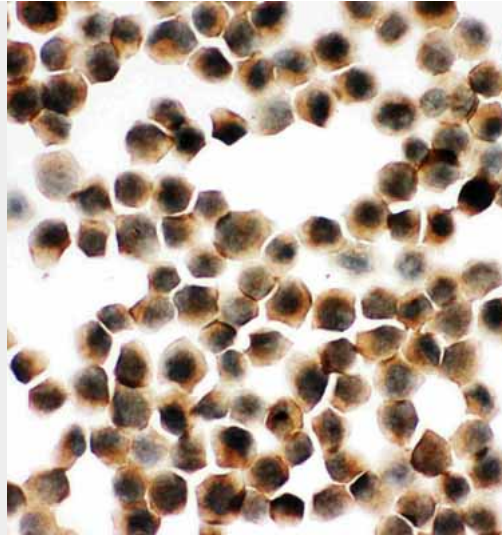
Anti-SNAP23 antibody, ABO11081, Western blotting  
Lane 1: Rat Spleen Tissue Lysate  
Lane 2: Rat testis Tissue Lysate  
Lane 3: Rat Ovary Tissue Lysate  
Lane 4: HELA Cell Lysate  
Lane 5: MCF-7 Cell Lysate  
Lane 6: SKOV Cell Lysate



Anti-SNAP23 antibody, ABO11081, IHC(P)  
IHC(P): Human Placenta Tissue



Anti-SNAP23 antibody, ABO11081, IHC(F)  
IHC(F): Human Placenta Tissue



Anti-SNAP23 antibody, ABO11081, ICCICC: K562 Cell

### **Anti-SNAP23 Antibody - Background**

SNAP23 (Synaptosomal-Associated Protein, 23-KD), also called SNAP23A, is a protein that in humans is encoded by the SNAP23 gene. The SNAP23 gene has 8 exons, with the initiation codon located in exon 2. The SNAP23 gene is mapped on 15q15.1-q15.2. The SNAP23 cDNA encodes a 211-amino acid polypeptide with a predicted mass of 23 kD. Its amino acid sequence is 59% identical to that of SNAP25. Northern blot analysis revealed that SNAP23 is ubiquitously expressed. SNAP23 is able to bind to multiple syntaxins as well as to multiple vesicle-associated membrane proteins. After relocation, SNAP23 is required for exocytosis, implying a crucial role in promoting membrane fusion. TIVAMP-containing vesicles were concentrated in the apical domain of epithelial cells. STX3A and SNAP23 were codistributed at the apical plasma membrane, where they formed N-ethyl maleimide-dependent SNARE complexes with TIVAMP and cellubrevin. SNAP23 is structurally and functionally similar to SNAP25 and binds tightly to multiple syntaxins and synaptobrevins/VAMPs. It is an essential component of the high affinity receptor for the general membrane fusion machinery and is an important regulator of transport vesicle docking and fusion.