

**Anti-Stra8 Antibody**  
Catalog # ABO10998

**Specification**

---

**Anti-Stra8 Antibody - Product Information**

Application	WB
Primary Accession	<a href="#">Q7Z7C7</a>
Host	Rabbit
Reactivity	Human
Clonality	Polyclonal
Format	Lyophilized

**Description**

Rabbit IgG polyclonal antibody for Stimulated by retinoic acid gene 8 protein homolog(STRA8) detection. Tested with WB in Human.

**Reconstitution**

Add 0.2ml of distilled water will yield a concentration of 500ug/ml.

**Anti-Stra8 Antibody - Additional Information**

**Gene ID** 346673

**Other Names**

Stimulated by retinoic acid gene 8 protein homolog, STRA8 {ECO:0000312|EMBL:AAP47163.1}

**Calculated MW**

36908 MW KDa

**Application Details**

Western blot, 0.1-0.5 µg/ml, Human<br>

**Subcellular Localization**

Cytoplasm .

**Tissue Specificity**

Expressed specifically in testis. .

**Protein Name**

Stimulated by retinoic acid gene 8 protein homolog

**Contents**

Each vial contains 5mg BSA, 0.9mg NaCl, 0.2mg Na<sub>2</sub>HPO<sub>4</sub>, 0.05mg Thimerosal, 0.05mg NaN<sub>3</sub>.

**Immunogen**

A synthetic peptide corresponding to a sequence at the C-terminus of human Stra8(313-330aa DEEMIMLQCTETFDDEDL).

**Purification**

Immunogen affinity purified.

### Cross Reactivity

No cross reactivity with other proteins

### Storage

At -20°C for one year. After r°Constitution, at 4°C for one month. It°Can also be aliquotted and stored frozen at -20°C for a longer time.Avoid repeated freezing and thawing.

## Anti-Stra8 Antibody - Protein Information

Name STRA8 ([HGNC:30653](#))

### Function

Meiosis-inducer required for the transition into meiosis for both female and male germ cells. In female germ cells, acts downstream of ZGLP1 as a key effector of the meiotic program: required for premeiotic DNA replication and subsequent events in meiotic prophase. During spermatogenesis, next to its role in meiotic initiation, promotes (but is not required for) spermatogonial differentiation. In complex with MEIOSIN, directly activates the transcription of a subset of critical meiotic genes playing a central role in cell-cycle switching from mitosis to meiosis.

### Cellular Location

Cytoplasm {ECO:0000250|UniProtKB:P70278}. Nucleus {ECO:0000250|UniProtKB:P70278}. Note=Shuttles between nucleus and cytoplasm. Nuclear export is XPO1-dependent {ECO:0000250|UniProtKB:P70278}

### Tissue Location

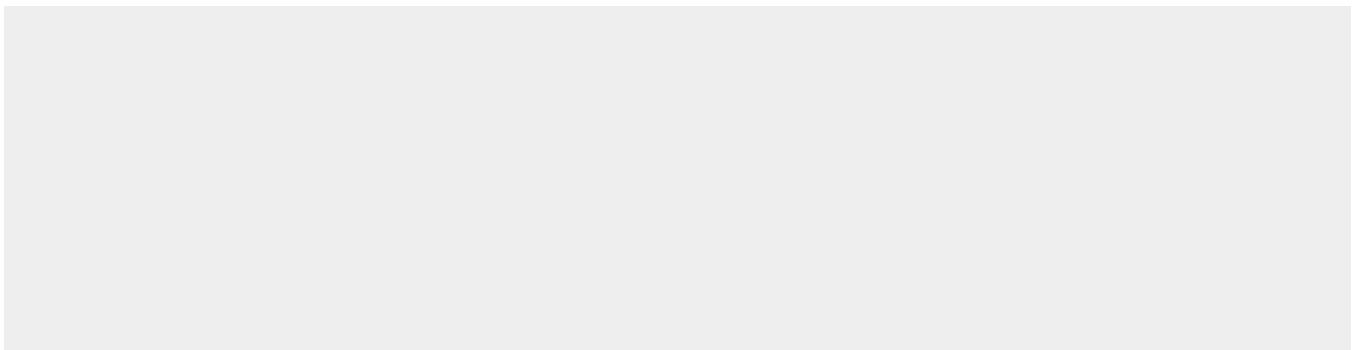
Expressed specifically in testis and fetal ovaries.

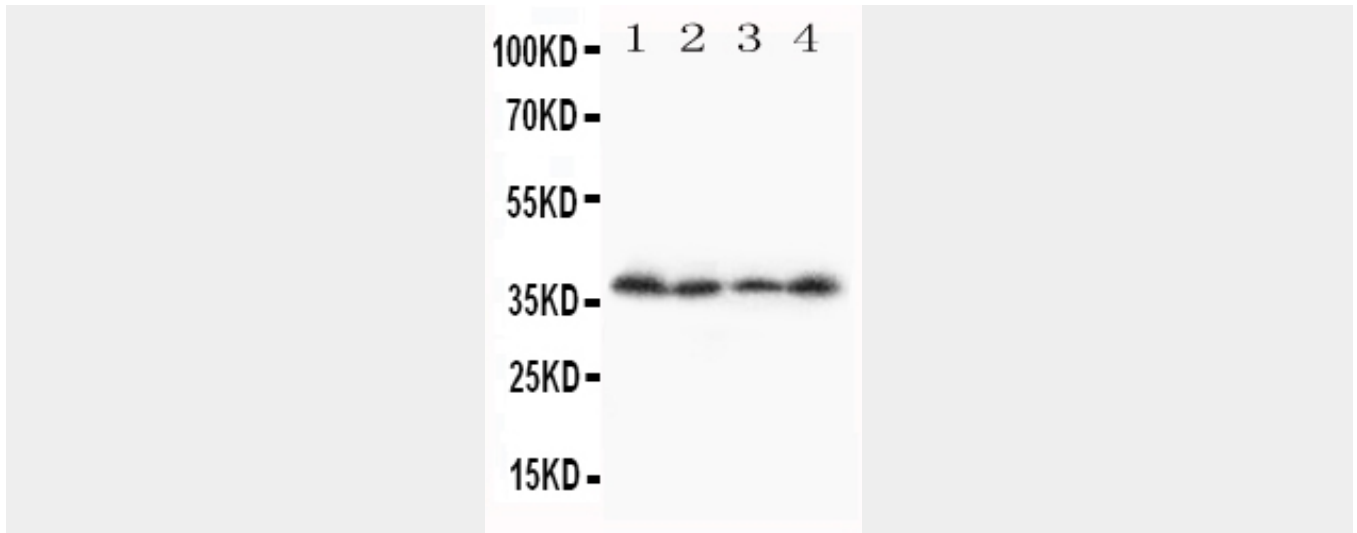
## Anti-Stra8 Antibody - Protocols

Provided below are standard protocols that you may find useful for product applications.

- [Western Blot](#)
- [Blocking Peptides](#)
- [Dot Blot](#)
- [Immunohistochemistry](#)
- [Immunofluorescence](#)
- [Immunoprecipitation](#)
- [Flow Cytometry](#)
- [Cell Culture](#)

## Anti-Stra8 Antibody - Images





Anti-Stra8 antibody, ABO10998, Western blotting  
Lane 1: A231 Cell Lysate  
Lane 2: JURKAT Cell Lysate  
Lane 3: HT1080 Cell Lysate  
Lane 4: SCG Cell Lysate

#### **Anti-Stra8 Antibody - Background**

Stra8, stimulated by retinoic acid 8, is expressed in embryonic ovaries just before meiotic initiation, whereas in testis it is expressed after birth. The STRA8 gene contains 9 exons. And this gene is mapped to chromosome 7q31. Retinoic acid(RA) signaling was required for Stra8 expression, and therefore initiation of meiosis, in embryonic mouse ovaries. RA was sufficient to induce Stra8 expression in embryonic testis. Cyp26-mediated RA metabolism was responsible for delaying Stra8 expression in embryonic testis. Since RA signaling regulated Stra8 expression in both embryonic ovaries and adult testis, it was said this portion of the meiotic initiation pathway may be identical in both sexes.