

Anti-Kallistatin/Serpina4 Antibody
Catalog # ABO10952**Specification****Anti-Kallistatin/Serpina4 Antibody - Product Information**

Application	IHC, WB
Primary Accession	P29622
Host	Rabbit
Reactivity	Human
Clonality	Polyclonal
Format	Lyophilized

Description

Rabbit IgG polyclonal antibody for Kallistatin(SERPINA4) detection. Tested with WB, IHC-P in Human.

Reconstitution

Add 0.2ml of distilled water will yield a concentration of 500ug/ml.

Anti-Kallistatin/Serpina4 Antibody - Additional Information

Gene ID 5267

Other Names

Kallistatin, Kallikrein inhibitor, Peptidase inhibitor 4, PI-4, Serpin A4, SERPINA4, KST, PI4

Calculated MW

48542 MW KDa

Application Details

Immunohistochemistry(Paraffin-embedded Section), 0.5-1 µg/ml, Human, By Heat
Western blot, 0.1-0.5 µg/ml, Human

Subcellular Localization

Secreted.

Tissue Specificity

Expressed by the liver and secreted in plasma.

Protein Name

Kallistatin

Contents

Each vial contains 5mg BSA, 0.9mg NaCl, 0.2mg Na₂HPO₄, 0.05mg Thimerosal, 0.05mg NaN₃.

Immunogen

A synthetic peptide corresponding to a sequence at the C-terminus of human Kallistatin(384-401aa AIKFFSAQTNRHILRFNR).

Purification

Immunogen affinity purified.

Cross Reactivity

No cross reactivity with other proteins

Storage

At -20°C for one year. After reconstitution, at 4°C for one month. It can also be aliquotted and stored frozen at -20°C for a longer time. Avoid repeated freezing and thawing.

Sequence Similarities

Belongs to the serpin family.

Anti-Kallistatin/Serpina4 Antibody - Protein Information

Name SERPINA4

Synonyms KST, PI4

Function

Inhibits human amidolytic and kininogenase activities of tissue kallikrein. Inhibition is achieved by formation of an equimolar, heat- and SDS-stable complex between the inhibitor and the enzyme, and generation of a small C-terminal fragment of the inhibitor due to cleavage at the reactive site by tissue kallikrein.

Cellular Location

Secreted.

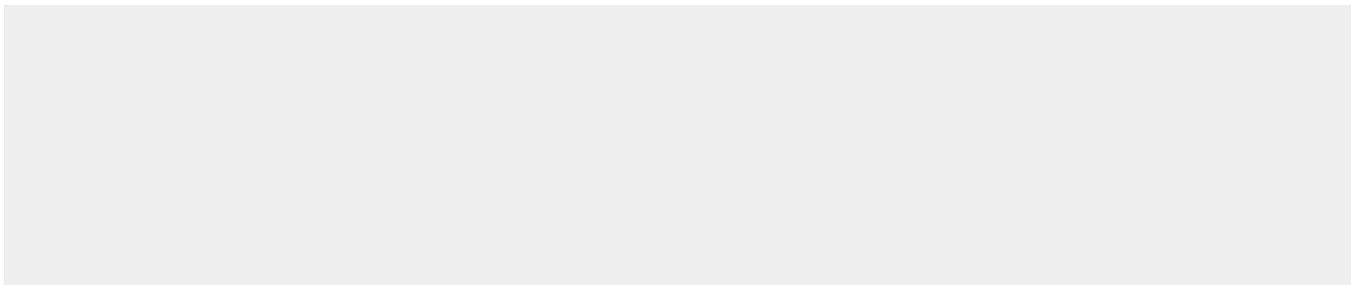
Tissue Location

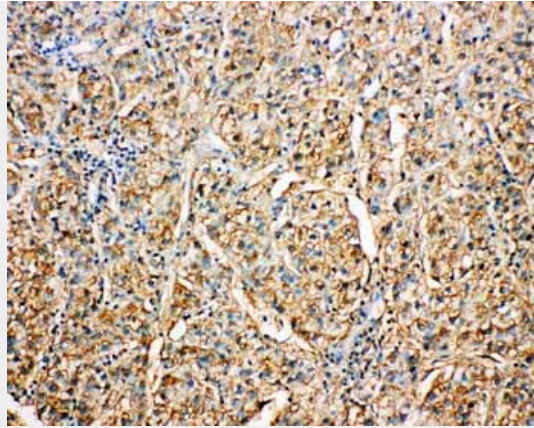
Expressed by the liver and secreted in plasma.

Anti-Kallistatin/Serpina4 Antibody - Protocols

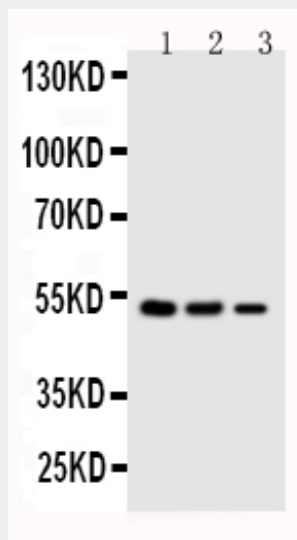
Provided below are standard protocols that you may find useful for product applications.

- [Western Blot](#)
- [Blocking Peptides](#)
- [Dot Blot](#)
- [Immunohistochemistry](#)
- [Immunofluorescence](#)
- [Immunoprecipitation](#)
- [Flow Cytometry](#)
- [Cell Culture](#)

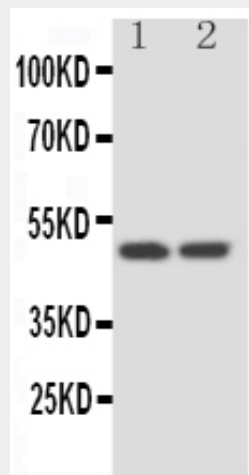
Anti-Kallistatin/Serpina4 Antibody - Images



Anti-Kallistatin antibody, ABO10952, IHC(P)IHC(P): Human Liver Cancer Tissue



Anti-Kallistatin antibody, ABO10952, Western blotting Lane 1: SMMC Cell Lysate Lane 2: COLO320 Cell Lysate Lane 3: JURKAT Cell Lysate



Anti-Kallistatin antibody, ABO10952, Western blotting Lane 1: HELA Cell Lysate Lane 2: SKOV Cell Lysate

Anti-Kallistatin/Serpina4 Antibody - Background

Serpina 4, also called Kallistatin, PI4 or TISSUE KALLIKREIN INHIBITOR, is a protein that in humans

is encoded by the SERPINA4 gene. The *serpina4* is a member of the serpin superfamily and represents a major inhibitor of human tissue kallikrein in the circulation. The SERPINA4 gene is localized to 14q32.13. The translated amino acid sequence of *serpina4* matches the protein sequence and shares 44 to 46% sequence identity with other serpin family members. Kallistatin is a serine proteinase inhibitor (serpin) and a heparin-binding protein. It is localized in vascular smooth muscle cells and endothelial cells of blood vessels, suggesting that it may be involved in the regulation of vascular function. And *serpina4* also plays a role in neointima hyperplasia.