

**Anti-KIM1 Antibody**  
**Catalog # ABO10946****Specification**

---

**Anti-KIM1 Antibody - Product Information**

Application	IHC
Primary Accession	<a href="#">O54947</a>
Host	Rabbit
Reactivity	Rat
Clonality	Polyclonal
Format	Lyophilized

**Description**

Rabbit IgG polyclonal antibody for Hepatitis A virus cellular receptor 1 homolog(HAVCR1) detection. Tested with WB, IHC-P, IHC-F in Rat.

**Reconstitution**

Add 0.2ml of distilled water will yield a concentration of 500ug/ml.

**Anti-KIM1 Antibody - Additional Information**

**Gene ID** 286934

**Other Names**

Hepatitis A virus cellular receptor 1 homolog, HAVcr-1, Kidney injury molecule 1, KIM-1, T cell immunoglobulin and mucin domain-containing protein 1, TIMD-1, Havcr1, Kim1

**Calculated MW**

33964 MW KDa

**Application Details**

Immunohistochemistry(Frozen Section), 0.5-1 µg/ml, Rat,  
-<br>Immunohistochemistry(Paraffin-embedded Section), 0.5-1 µg/ml, Rat, By Heat<br>Western blot, 0.1-0.5 µg/ml, Rat<br>

**Subcellular Localization**

Membrane ; Single-pass type I membrane protein .

**Tissue Specificity**

Expressed at a low level in normal kidney but are increased dramatically in postischemic kidney. Expressed in proliferating bromodeoxyuridine-positive and dedifferentiated vimentin-positive epithelial cells in regenerating proximal tubules. .

**Protein Name**

Hepatitis A virus cellular receptor 1 homolog(HAVcr-1)

**Contents**

Each vial contains 5mg BSA, 0.9mg NaCl, 0.2mg Na<sub>2</sub>HPO<sub>4</sub>, 0.05mg Thimerosal, 0.05mg NaN<sub>3</sub>.

**Immunogen**

A synthetic peptide corresponding to a sequence at the C-terminus of rat TIM 1(289-307aa HPRAEDNIYIIEDSRGAE).

**Purification**

Immunogen affinity purified.

**Cross Reactivity**

No cross reactivity with other proteins

**Storage**

**At -20°C for one year. After reconstitution, at 4°C for one month. It can also be aliquotted and stored frozen at -20°C for a longer time. Avoid repeated freezing and thawing.**

**Sequence Similarities**

Belongs to the immunoglobulin superfamily. TIM family.

**Anti-KIM1 Antibody - Protein Information**

**Name** Havcr1

**Synonyms** Kim1

**Function**

Phosphatidylserine receptor that plays an important functional role in regulatory B-cells homeostasis including generation, expansion and suppressor functions (By similarity). As P-selectin/SELPLG ligand, plays a specialized role in activated but not naive T-cell trafficking during inflammatory responses. Controls thereby T-cell accumulation in the inflamed central nervous system (CNS) and the induction of autoimmune disease (By similarity). Regulates also expression of various anti-inflammatory cytokines and co-inhibitory ligands including IL10. Acts as a regulator of T-cell proliferation (By similarity). May play a role in kidney injury and repair (By similarity).

**Cellular Location**

Cell membrane {ECO:0000250|UniProtKB:Q96D42}; Single-pass type I membrane protein {ECO:0000250|UniProtKB:Q96D42}

**Tissue Location**

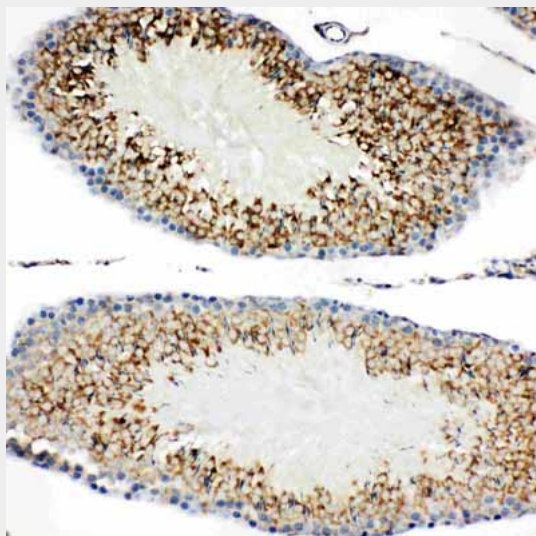
Expressed at a low level in normal kidney but are increased dramatically in postischemic kidney. Expressed in proliferating bromodeoxyuridine-positive and dedifferentiated vimentin- positive epithelial cells in regenerating proximal tubules

**Anti-KIM1 Antibody - Protocols**

Provided below are standard protocols that you may find useful for product applications.

- [Western Blot](#)
- [Blocking Peptides](#)
- [Dot Blot](#)
- [Immunohistochemistry](#)
- [Immunofluorescence](#)
- [Immunoprecipitation](#)
- [Flow Cytometry](#)
- [Cell Culture](#)

## Anti-KIM1 Antibody - Images



Anti-TIM 1 antibody, ABO10946, IHC(P)IHC(P): Rat Testis Tissue

## Anti-KIM1 Antibody - Background

KIM1(KIDNEY INJURY MOLECULE 1), also known as HAVCR1, HAVCR or TIM1, is a protein that in humans is encoded by the KIM1 gene. The KIM1 gene is mapped to 5q33.3. Biochemical, mutational, and cell adhesion analyses confirm that Tim1 is capable of homophilic Tim-Tim interactions. The features identified in murine KIM1 is conserved in human KIM1. The KIM1 protein is indeed a receptor for the virus through the infection of canine osteogenic sarcoma cells expressing HAVCR1 with HAV. Using a monoclonal antibody to mouse Tim1, Tim1 is expressed after activation of naive T cells and on T cells differentiated in Th2-polarizing conditions. Ectopic expression of KIM1 during mouse T-cell differentiation leads to production of the Th2-type cytokine IL4, but not the Th1-type cytokine IFN $\gamma$ . KIM1-expressing epithelial cells internalized apoptotic bodies, and Kim1 is directly responsible for phagocytosis in cultured primary rat tubule epithelial cells and in porcine and canine epithelial cell lines.