

**Anti-Integrin Alpha 3 Antibody**  
Catalog # ABO10934**Specification****Anti-Integrin Alpha 3 Antibody - Product Information**

Application	WB, IHC
Primary Accession	<a href="#">P26006</a>
Host	Rabbit
Reactivity	Human, Mouse, Rat
Clonality	Polyclonal
Format	Lyophilized

**Description**

Rabbit IgG polyclonal antibody for Integrin alpha-3(ITGA3) detection. Tested with WB, IHC-P in Human;Mouse;Rat.

**Reconstitution**

Add 0.2ml of distilled water will yield a concentration of 500ug/ml.

**Anti-Integrin Alpha 3 Antibody - Additional Information**

**Gene ID** 3675

**Other Names**

Integrin alpha-3, CD49 antigen-like family member C, FRP-2, Galactoprotein B3, GAPB3, VLA-3 subunit alpha, CD49c, Integrin alpha-3 heavy chain, Integrin alpha-3 light chain, ITGA3, MSK18

**Calculated MW**

116612 MW KDa

**Application Details**

Immunohistochemistry(Paraffin-embedded Section), 0.5-1 µg/ml, Human, Rat, Mouse, By Heat<br>Western blot, 0.1-0.5 µg/ml, Human, Rat, Mouse<br>

**Subcellular Localization**

Cell membrane ; Single-pass type I membrane protein . Cell membrane ; Lipid-anchor . Cell projection, invadopodium membrane ; Single-pass type I membrane protein . Cell projection, filopodium membrane ; Single-pass type I membrane protein . Enriched preferentially at invadopodia, cell membrane protrusions that correspond to sites of cell invasion, in a collagen-dependent manner. .

**Tissue Specificity**

Isoform 1 is widely expressed. Isoform 2 is expressed in brain and heart. In brain, both isoforms are exclusively expressed on vascular smooth muscle cells, whereas in heart isoform 1 is strongly expressed on vascular smooth muscle cells, isoform 2 is detected only on endothelial vein cells. .

**Protein Name**

Integrin alpha-3

**Contents**

Each vial contains 5mg BSA, 0.9mg NaCl, 0.2mg Na<sub>2</sub>HPO<sub>4</sub>, 0.05mg Thimerosal, 0.05mg NaN<sub>3</sub>.

#### **Immunogen**

A synthetic peptide corresponding to a sequence at the N-terminus of human Integrin alpha 3(51-67aa LFGYSVALHRQTERQQR), identical to the related rat and mouse sequences.

#### **Purification**

Immunogen affinity purified.

#### **Cross Reactivity**

No cross reactivity with other proteins

#### **Storage**

**At -20°C for one year. After r°Constitution, at 4°C for one month. It°Can also be aliquotted and stored frozen at -20°C for a longer time.Avoid repeated freezing and thawing.**

#### **Sequence Similarities**

Belongs to the integrin alpha chain family.

### **Anti-Integrin Alpha 3 Antibody - Protein Information**

**Name** ITGA3

**Synonyms** MSK18

#### **Function**

Integrin alpha-3/beta-1 is a receptor for fibronectin, laminin, collagen, epiligrin, thrombospondin and CSPG4. Integrin alpha- 3/beta-1 provides a docking site for FAP (seprase) at invadopodia plasma membranes in a collagen-dependent manner and hence may participate in the adhesion, formation of invadopodia and matrix degradation processes, promoting cell invasion. Alpha-3/beta-1 may mediate with LGALS3 the stimulation by CSPG4 of endothelial cells migration.

#### **Cellular Location**

Cell membrane; Single-pass type I membrane protein. Cell membrane; Lipid- anchor. Cell projection, invadopodium membrane; Single-pass type I membrane protein. Cell projection, filopodium membrane; Single-pass type I membrane protein. Note=Enriched preferentially at invadopodia, cell membrane protrusions that correspond to sites of cell invasion, in a collagen-dependent manner.

#### **Tissue Location**

Isoform 1 is widely expressed. Isoform 2 is expressed in brain and heart. In brain, both isoforms are exclusively expressed on vascular smooth muscle cells, whereas in heart isoform 1 is strongly expressed on vascular smooth muscle cells, isoform 2 is detected only on endothelial vein cells.

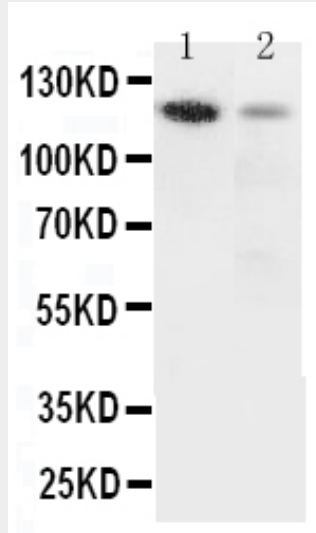
### **Anti-Integrin Alpha 3 Antibody - Protocols**

Provided below are standard protocols that you may find useful for product applications.

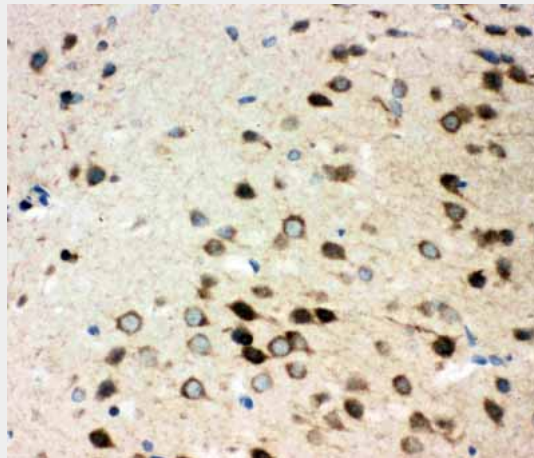
- [Western Blot](#)
- [Blocking Peptides](#)
- [Dot Blot](#)
- [Immunohistochemistry](#)

- [Immunofluorescence](#)
- [Immunoprecipitation](#)
- [Flow Cytometry](#)
- [Cell Culture](#)

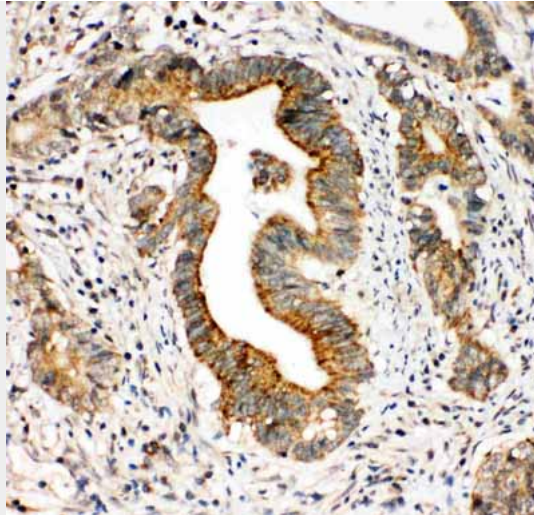
### Anti-Integrin Alpha 3 Antibody - Images



Anti-Integrin alpha 3 antibody, ABO10934, Western blotting  
Lane 1: Rat Heart Tissue Lysate  
Lane 2: HELA Cell Lysate



Anti-Integrin alpha 3 antibody, ABO10934, IHC(P)IHC(P): Rat Brain Tissue



Anti-Integrin alpha 3 antibody, ABO10934, IHC(P)IHC(P): Human Intestinal Cancer Tissue

### **Anti-Integrin Alpha 3 Antibody - Background**

ITGA3(INTEGRIN, ALPHA-3), also called CD49C, VLA3 or GAPB3, is a protein that in humans is encoded by the ITGA3 gene. ITGA3 is an integrin alpha subunit which is also a member of the family of cell surface adhesion molecules. ITGA3 is mapped to chromosome 17 and its exact cytogenetic location is 17q21.33. ITGA3 makes up half of the alpha3beta1 integrin duplex that plays a role in neural migration and corticogenesis together with beta-1 subunit. A functional link between DAB1 phosphorylation and ITGA3 signaling drives the timely detachment of migrating neurons from radial glial fibers. Expression of human ITGA3 increased the infectivity of virus for Chinese hamster ovary cells. ITGA3 also contains 13 potential N-glycosylation sites, 2 potential cleavage sites, and the 7 N-terminal repeating units characteristic of ITGAs. Recombinant ITGA3 is expressed as a 150-kD protein as the same size as the native protein by the western blot analysis.