

**Anti-IL2 Receptor Gamma Antibody**  
Catalog # ABO10930**Specification****Anti-IL2 Receptor Gamma Antibody - Product Information**

Application	WB
Primary Accession	<a href="#">P31785</a>
Host	Rabbit
Reactivity	Human
Clonality	Polyclonal
Format	Lyophilized

**Description**

Rabbit IgG polyclonal antibody for Cytokine receptor common subunit gamma(IL2RG) detection. Tested with WB in Human.

**Reconstitution**

Add 0.2ml of distilled water will yield a concentration of 500ug/ml.

**Anti-IL2 Receptor Gamma Antibody - Additional Information**

**Gene ID** 3561

**Other Names**

Cytokine receptor common subunit gamma, Interleukin-2 receptor subunit gamma, IL-2 receptor subunit gamma, IL-2R subunit gamma, IL-2RG, gammaC, p64, CD132, IL2RG

**Calculated MW**

42287 MW KDa

**Application Details**

Western blot, 0.1-0.5 µg/ml, Human<br>

**Subcellular Localization**

Membrane; Single-pass type I membrane protein.

**Protein Name**

Cytokine receptor common subunit gamma

**Contents**

Each vial contains 5mg BSA, 0.9mg NaCl, 0.2mg Na<sub>2</sub>HPO<sub>4</sub>, 0.05mg Thimerosal, 0.05mg NaN<sub>3</sub>.

**Immunogen**

A synthetic peptide corresponding to a sequence in the middle region of human IL2 Receptor gamma(88-102aa HYWYKNSDNDKVQKC).

**Purification**

Immunogen affinity purified.

**Cross Reactivity**

No cross reactivity with other proteins

Storage

**At -20°C for one year. After reconstitution, at 4°C for one month. It can also be aliquotted and stored frozen at -20°C for a longer time. Avoid repeated freezing and thawing.**

#### Sequence Similarities

Belongs to the type I cytokine receptor family. Type 5 subfamily.

### Anti-IL2 Receptor Gamma Antibody - Protein Information

**Name** IL2RG

#### Function

Common subunit for the receptors for a variety of interleukins. Probably in association with IL15RA, involved in the stimulation of neutrophil phagocytosis by IL15 (PubMed: <http://www.uniprot.org/citations/15123770> target="\_blank">15123770</a>).

#### Cellular Location

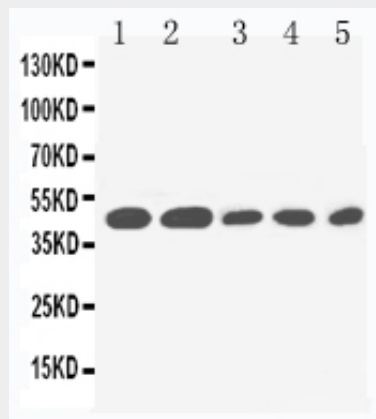
Cell membrane; Single-pass type I membrane protein. Cell surface

### Anti-IL2 Receptor Gamma Antibody - Protocols

Provided below are standard protocols that you may find useful for product applications.

- [Western Blot](#)
- [Blocking Peptides](#)
- [Dot Blot](#)
- [Immunohistochemistry](#)
- [Immunofluorescence](#)
- [Immunoprecipitation](#)
- [Flow Cytometry](#)
- [Cell Culture](#)

### Anti-IL2 Receptor Gamma Antibody - Images



Anti-IL2 Receptor gamma antibody, ABO10930, Western blotting Lane 1: PANC Cell Lysate Lane 2:

HELA Cell Lysate Lane 3: JURKAT Cell Lysate Lane 4: RAJI Cell Lysate Lane 5: CEM Cell Lysate

### **Anti-IL2 Receptor Gamma Antibody - Background**

IL2RG (INTERLEUKIN 2 RECEPTOR, GAMMA), also known as Common gamma chain or CD132, is a cytokine receptor sub-unit that is common to the receptor complexes for at least six different interleukin receptors: IL-2, IL-4, IL-7, IL-9, IL-15 and interleukin-21 receptor. IL2RG is a member of the type I cytokine receptor family expressed on most lymphocyte (white blood cell) populations, and its gene is found on the X-chromosome of mammals. By fluorescence in situ hybridization and PCR amplification of somatic cell hybrid DNAs, the IL2RG gene is mapped to Xq13.1. The IL2RG gene contains 8 exons and spans approximately 4.2 kb. And the gamma chain is an indispensable component of the functional IL2 receptor. Lymphocytes expressing the common gamma chain can form functional receptors for these cytokine proteins, which transmit signals from one cell to another and direct programs of cellular differentiation. The sharing of the gamma subunit by several receptors explains why humans and mice that lack IL2 entirely show milder symptoms than those with IL2RG deficiency.