

Anti-HOXA6 Antibody
Catalog # ABO10920**Specification**

Anti-HOXA6 Antibody - Product Information

Application	WB
Primary Accession	P31267
Host	Rabbit
Reactivity	Human, Mouse, Rat
Clonality	Polyclonal
Format	Lyophilized

Description

Rabbit IgG polyclonal antibody for Homeobox protein Hox-A6(HOXA6) detection. Tested with WB in Human;Mouse;Rat.

Reconstitution

Add 0.2ml of distilled water will yield a concentration of 500ug/ml.

Anti-HOXA6 Antibody - Additional Information

Gene ID 3203

Other Names

Homeobox protein Hox-A6, Homeobox protein Hox-1B, HOXA6, HOX1B

Calculated MW

26339 MW KDa

Application Details

Western blot, 0.1-0.5 µg/ml, Human, Rat, Mouse

Subcellular Localization

Nucleus.

Protein Name

Homeobox protein Hox-A6

Contents

Each vial contains 5mg BSA, 0.9mg NaCl, 0.2mg Na₂HPO₄, 0.05mg Thimerosal, 0.05mg NaN₃.

Immunogen

A synthetic peptide corresponding to a sequence in the middle region of human HOXA6(95-114aa KQRGPGDYLFHSPEQYKPD), identical to the related rat and mouse sequences.

Purification

Immunogen affinity purified.

Cross Reactivity

No cross reactivity with other proteins

Storage

At -20°C for one year. After r°Constitution, at 4°C for one month. It°Can also be aliquotted and stored frozen at -20°C for a longer time.Avoid repeated freezing and thawing.

Sequence Similarities

Belongs to the Antp homeobox family.

Anti-HOXA6 Antibody - Protein Information

Name HOXA6

Synonyms HOX1B

Function

Sequence-specific transcription factor which is part of a developmental regulatory system that provides cells with specific positional identities on the anterior-posterior axis.

Cellular Location

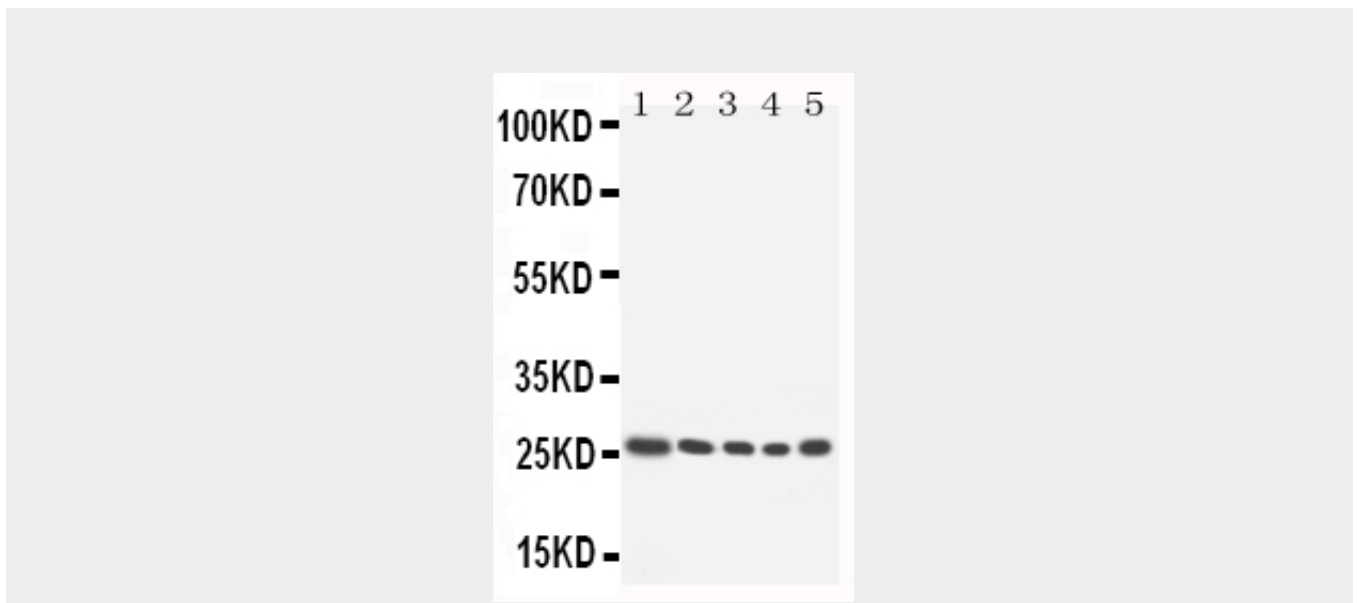
Nucleus.

Anti-HOXA6 Antibody - Protocols

Provided below are standard protocols that you may find useful for product applications.

- [Western Blot](#)
- [Blocking Peptides](#)
- [Dot Blot](#)
- [Immunohistochemistry](#)
- [Immunofluorescence](#)
- [Immunoprecipitation](#)
- [Flow Cytometry](#)
- [Cell Culture](#)

Anti-HOXA6 Antibody - Images



Anti-HOXA6 antibody, ABO10920, Western blotting Lane 1: SW620 cell Lysate Lane 2: SW620 cell Lysate Lane 3: HELA cell Lysate Lane 4: HT1080 cell Lysate Lane 5: HT1080 cell Lysate

Anti-HOXA6 Antibody - Background

HOXA6(HOMEBOX A6), also known as HOX1B, MOUSE or HOMOLOG OF, is a protein that in humans is encoded by the HOXA6 gene, which is also part of the A cluster on chromosome 7. HOXA6 encodes a DNA-binding transcription factor which may regulate gene expression, morphogenesis, and differentiation. Its cytogenetic location is 7q15.2. In vertebrates, the genes encoding the class of transcription factors called homeobox genes are found in clusters named A, B, C, and D on four separate chromosomes. Expression of these proteins is spatially and temporally regulated during embryonic development.