

**Anti-Caspase-9 Antibody**  
Catalog # ABO10909

**Specification**

---

**Anti-Caspase-9 Antibody - Product Information**

|                   |                        |
|-------------------|------------------------|
| Application       | <b>WB, IHC</b>         |
| Primary Accession | <a href="#">P55211</a> |
| Host              | <b>Rabbit</b>          |
| Reactivity        | <b>Human</b>           |
| Clonality         | <b>Polyclonal</b>      |
| Format            | <b>Lyophilized</b>     |

**Description**

Rabbit IgG polyclonal antibody for Caspase-9(CASP9) detection. Tested with WB, IHC-P in Human.

**Reconstitution**

Add 0.2ml of distilled water will yield a concentration of 500ug/ml.

**Anti-Caspase-9 Antibody - Additional Information**

**Gene ID** 842

**Other Names**

Caspase-9, CASP-9, 3.4.22.62, Apoptotic protease Mch-6, Apoptotic protease-activating factor 3, APAF-3, ICE-like apoptotic protease 6, ICE-LAP6, Caspase-9 subunit p35, Caspase-9 subunit p10, CASP9, MCH6

**Calculated MW**

46281 MW KDa

**Application Details**

Immunohistochemistry(Paraffin-embedded Section), 0.5-1 µg/ml, Human, By Heat<br><br>Western blot, 0.1-0.5 µg/ml, Human<br>

**Tissue Specificity**

Ubiquitous, with highest expression in the heart, moderate expression in liver, skeletal muscle, and pancreas. Low levels in all other tissues. Within the heart, specifically expressed in myocytes.

**Protein Name**

Caspase-9(CASP-9)

**Contents**

Each vial contains 5mg BSA, 0.9mg NaCl, 0.2mg Na<sub>2</sub>HPO<sub>4</sub>, 0.05mg Thimerosal, 0.05mg NaN<sub>3</sub>.

**Immunogen**

A synthetic peptide corresponding to a sequence in the middle region of human Caspase-9(183-198aa SNIDCEKLRRRFSSLH).

**Purification**

Immunogen affinity purified.

**Cross Reactivity**

No cross reactivity with other proteins

Storage

**At -20°C for one year. After reconstitution, at 4°C for one month. It can also be aliquotted and stored frozen at -20°C for a longer time. Avoid repeated freezing and thawing.**

**Sequence Similarities**

Belongs to the peptidase C14A family.

**Anti-Caspase-9 Antibody - Protein Information**

**Name** CASP9

**Synonyms** MCH6

**Function**

Involved in the activation cascade of caspases responsible for apoptosis execution. Binding of caspase-9 to Apaf-1 leads to activation of the protease which then cleaves and activates effector caspases caspase-3 (CASP3) or caspase-7 (CASP7). Promotes DNA damage- induced apoptosis in a ABL1/c-Abl-dependent manner. Proteolytically cleaves poly(ADP-ribose) polymerase (PARP). Cleaves BIRC6 following inhibition of BIRC6-caspase binding by DIABLO/SMAC (PubMed:<a href="http://www.uniprot.org/citations/36758105" target="\_blank">36758105</a>, PubMed:<a href="http://www.uniprot.org/citations/36758106" target="\_blank">36758106</a>).

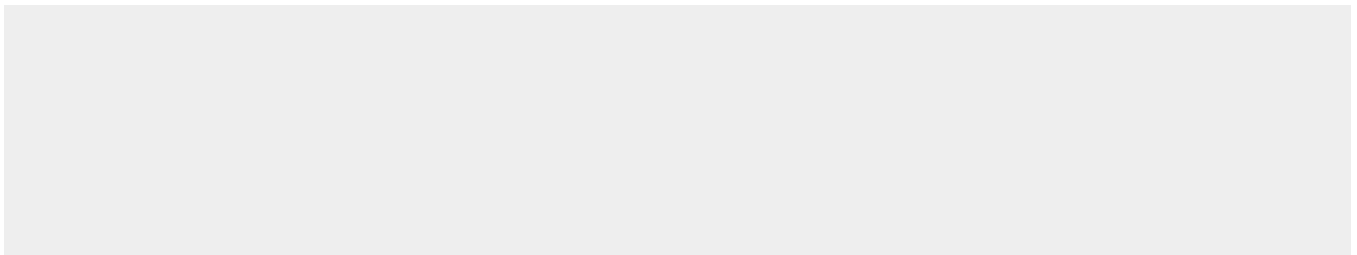
**Tissue Location**

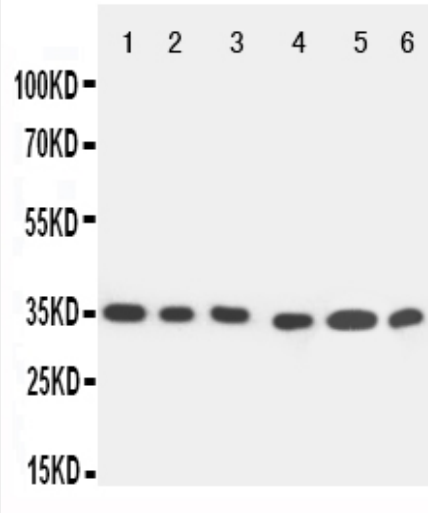
Ubiquitous, with highest expression in the heart, moderate expression in liver, skeletal muscle, and pancreas. Low levels in all other tissues. Within the heart, specifically expressed in myocytes.

**Anti-Caspase-9 Antibody - Protocols**

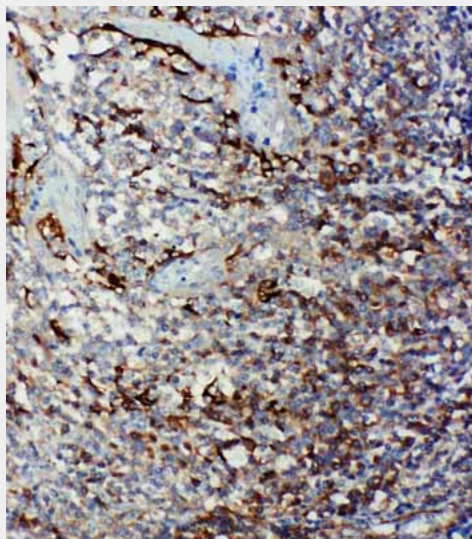
Provided below are standard protocols that you may find useful for product applications.

- [Western Blot](#)
- [Blocking Peptides](#)
- [Dot Blot](#)
- [Immunohistochemistry](#)
- [Immunofluorescence](#)
- [Immunoprecipitation](#)
- [Flow Cytometry](#)
- [Cell Culture](#)

**Anti-Caspase-9 Antibody - Images**



Anti-Caspase-9 antibody, ABO10909, Western blotting All lanes: Anti Caspase-9 (ABO10909) at 0.5ug/ml Lane 1: SMMC Whole Cell Lysate at 40ug Lane 2: MCF-7 Whole Cell Lysate at 40ug Lane 3: CEM Whole Cell Lysate at 40ug Lane 4: JURKAT Whole Cell Lysate at 40ug Lane 5: RAJI Whole Cell Lysate at 40ug Lane 6: HELA Whole Cell Lysate at 40ug Predicted bind size: 35KD Observed bind size: 35KD



Anti-Caspase-9 antibody, ABO10909, IHC(P) IHC(P): Human Tonsil Tissue

### Anti-Caspase-9 Antibody - Background

CASP9(CASPASE9), also called APAF3, is an initiator caspase, encoded by the CASP9 gene. The CASP9 gene is mapped to chromosome 1p36.3-p36.1 by FISH. CASP9 is identified as a member of the caspase family that participates in caspase-3 activation in vitro. And it also regarded as the most upstream member of the apoptotic protease cascade that is triggered by cytochrome c and dATP. Its genomic coordinates(GRCh37) is 1:15,818,768-15,851,284. The crystal structure of CASP9 is complex with the BIR3 in an inhibitory domain of XIAP at 2.4-angstrom resolution and the CASP9 gene contains 9 exons and spans approximately 35 kb of genomic DNA. Caspase-9 and APAF1 bind to each other via their respective NH2-terminal CED-3 homologous domains in the presence of cytochrome c and dATP, an event that leads to caspase-9 activation. CASP9 activity increases dramatically upon association with the apoptosome complex. And the majority of Casp9 knockout mice died perinatally with a markedly enlarged and malformed cerebrum caused by reduced apoptosis during brain development.