

Anti-CtBP1 Antibody
Catalog # ABO10885

Specification

Anti-CtBP1 Antibody - Product Information

Application	WB, IHC
Primary Accession	Q13363
Host	Rabbit
Reactivity	Human, Mouse, Rat
Clonality	Polyclonal
Format	Lyophilized

Description

Rabbit IgG polyclonal antibody for C-terminal-binding protein 1(CTBP1) detection. Tested with WB, IHC-P in Human;Mouse;Rat.

Reconstitution

Add 0.2ml of distilled water will yield a concentration of 500ug/ml.

Anti-CtBP1 Antibody - Additional Information

Gene ID 1487

Other Names

C-terminal-binding protein 1, CtBP1, 1.1.1.-, CTBP1, CTBP

Calculated MW

47535 MW KDa

Application Details

Immunohistochemistry(Paraffin-embedded Section), 0.5-1 µg/ml, Human, Rat, Mouse, By Heat
Western blot, 0.1-0.5 µg/ml, Human, Rat, Mouse

Subcellular Localization

Cytoplasm . Nucleus .

Tissue Specificity

Expressed in germinal center B-cells. .

Protein Name

C-terminal-binding protein 1(CtBP1)

Contents

Each vial contains 5mg BSA, 0.9mg NaCl, 0.2mg Na₂HPO₄, 0.05mg Thimerosal, 0.05mg NaN₃.

Immunogen

A synthetic peptide corresponding to a sequence at the C-terminus of human CtBP1(425-440aa QTVKPEADRDHASDQL), different from the related rat and mouse sequences by one amino acid.

Purification

Immunogen affinity purified.

Cross Reactivity

No cross reactivity with other proteins

Storage

At -20°C for one year. After reconstitution, at 4°C for one month. It can also be aliquotted and stored frozen at -20°C for a longer time. Avoid repeated freezing and thawing.

Anti-CtBP1 Antibody - Protein Information

Name CTBP1

Synonyms CTBP

Function

Corepressor targeting diverse transcription regulators such as GLIS2 or BCL6. Has dehydrogenase activity. Involved in controlling the equilibrium between tubular and stacked structures in the Golgi complex. Functions in brown adipose tissue (BAT) differentiation.

Cellular Location

Cytoplasm. Nucleus

Tissue Location

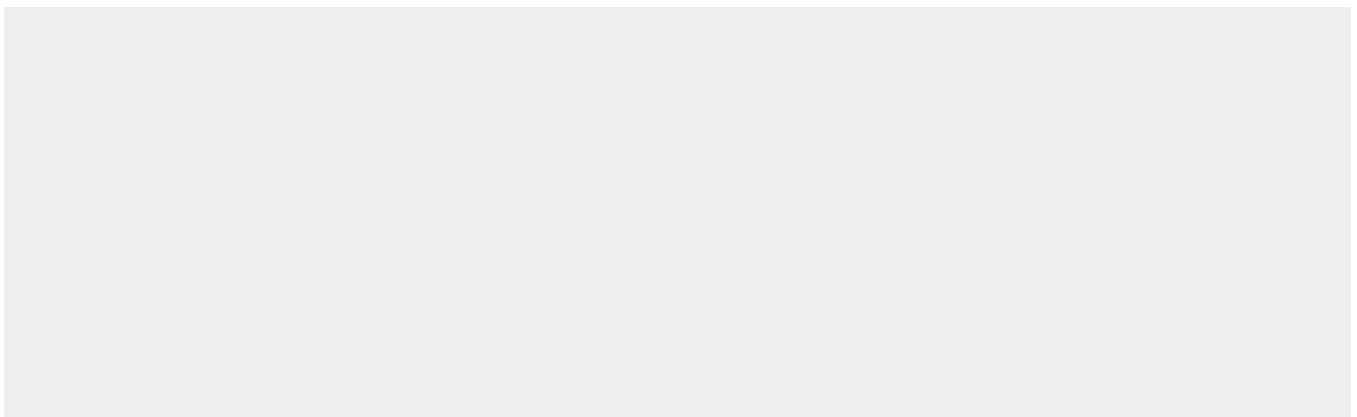
Expressed in germinal center B-cells.

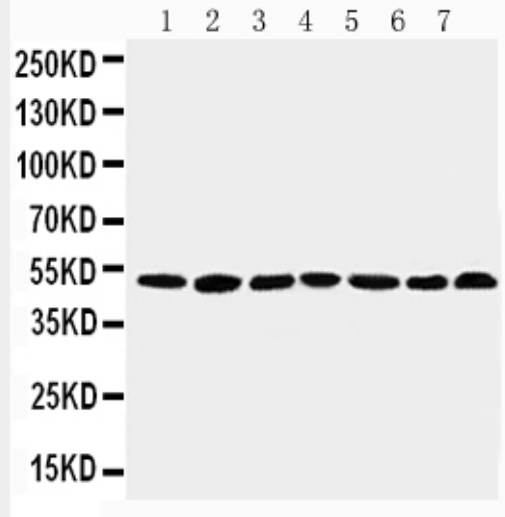
Anti-CtBP1 Antibody - Protocols

Provided below are standard protocols that you may find useful for product applications.

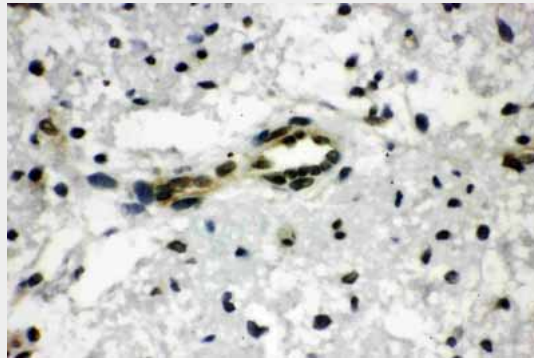
- [Western Blot](#)
- [Blocking Peptides](#)
- [Dot Blot](#)
- [Immunohistochemistry](#)
- [Immunofluorescence](#)
- [Immunoprecipitation](#)
- [Flow Cytometry](#)
- [Cell Culture](#)

Anti-CtBP1 Antibody - Images





Anti-CtBP1 antibody, ABO10885, Western blotting
 Lane 1: Rat Brain Tissue Lysate
 Lane 2: Rat Testis Tissue Lysate
 Lane 3: Rat Ovary Tissue Lysate
 Lane 4: U87 Cell Lysate
 Lane 5: SW620 Cell Lysate
 Lane 6: HT1080 Cell Lysate
 Lane 7: COLO32 Cell Lysate



Anti-CtBP1 antibody, ABO10885, IHC(P)
 IHC(P): Rat Brain Tissue

Anti-CtBP1 Antibody - Background

CTBP1, C-terminal-binding protein 1, is a protein that in humans is encoded by the CTBP1 gene. The CtBP1 protein binds to the C-terminus of adenovirus E1A proteins. This gene is mapped to 4p16. This phosphoprotein is a transcriptional repressor(corepressor) and may play a role during cellular proliferation. This protein and the product of a second closely related gene, CTBP2, can dimerize. CtBP1 and CtBP2 preferentially associate with the E1A via a 5 amino acid motif, PLDLS, to repress E1A induced oncogenesis and cellular transformation. CtBP1 is expressed from embryo to adult, but CtBP2 is mainly expressed during embryogenesis. During skeletal and T cell development, CtBP1 and CtBP2 associate with the PLDLSL domain of delta EF1, a cellular zinc finger-homeodomain protein, and thereby enhances delta EF1-induced transcriptional silencing. In addition, CtBP complexes with CtIP, a 125 kDa protein that recognizes distinctly different protein motifs from CtBP. CtIP binds to the BRCT repeats within the breast cancer gene BRCA1 and enables CtBP to influence BRCA1 activity. Both proteins can also interact with a polycomb group protein complex which participates in regulation of gene expression during development. Alternative splicing of transcripts from this gene results in multiple transcript variants.