

**Anti-Desmoglein 2 Antibody**  
Catalog # ABO10877**Specification**

---

**Anti-Desmoglein 2 Antibody - Product Information**

Application	WB
Primary Accession	<a href="#">Q14126</a>
Host	Rabbit
Reactivity	Human, Mouse, Rat
Clonality	Polyclonal
Format	Lyophilized

**Description**

Rabbit IgG polyclonal antibody for Desmoglein-2(DSG2) detection. Tested with WB, IHC-P in Human;Mouse;Rat.

**Reconstitution**

Add 0.2ml of distilled water will yield a concentration of 500ug/ml.

**Anti-Desmoglein 2 Antibody - Additional Information**

**Gene ID** 1829

**Other Names**

Desmoglein-2, Cadherin family member 5, HDGC, DSG2, CDHF5

**Calculated MW**

122294 MW KDa

**Application Details**

Immunohistochemistry(Paraffin-embedded Section), 0.5-1 µg/ml, Human, Rat, Mouse, By Heat<br>Western blot, 0.1-0.5 µg/ml, Human, Rat, Mouse<br>

**Subcellular Localization**

Cell membrane; Single-pass type I membrane protein. Cell junction, desmosome.

**Tissue Specificity**

All of the tissues tested and carcinomas.

**Protein Name**

Desmoglein-2

**Contents**

Each vial contains 5mg BSA, 0.9mg NaCl, 0.2mg Na<sub>2</sub>HPO<sub>4</sub>, 0.05mg Thimerosal, 0.05mg NaN<sub>3</sub>.

**Immunogen**

A synthetic peptide corresponding to a sequence at the C-terminus of human Desmoglein 2(1104-1118aa STRVTKHSTVQHSYS), different from the related mouse and rat sequences by one amino acid.

**Purification**

Immunogen affinity purified.

**Cross Reactivity**

No cross reactivity with other proteins

**Storage**

**At -20°C for one year. After reconstitution, at 4°C for one month. It can also be aliquotted and stored frozen at -20°C for a longer time. Avoid repeated freezing and thawing.**

**Sequence Similarities**

Contains 4 cadherin domains.

**Anti-Desmoglein 2 Antibody - Protein Information**

**Name** DSG2

**Synonyms** CDHF5

**Function**

Component of intercellular desmosome junctions. Involved in the interaction of plaque proteins and intermediate filaments mediating cell-cell adhesion.

**Cellular Location**

Cell membrane; Single-pass type I membrane protein. Cell junction, desmosome

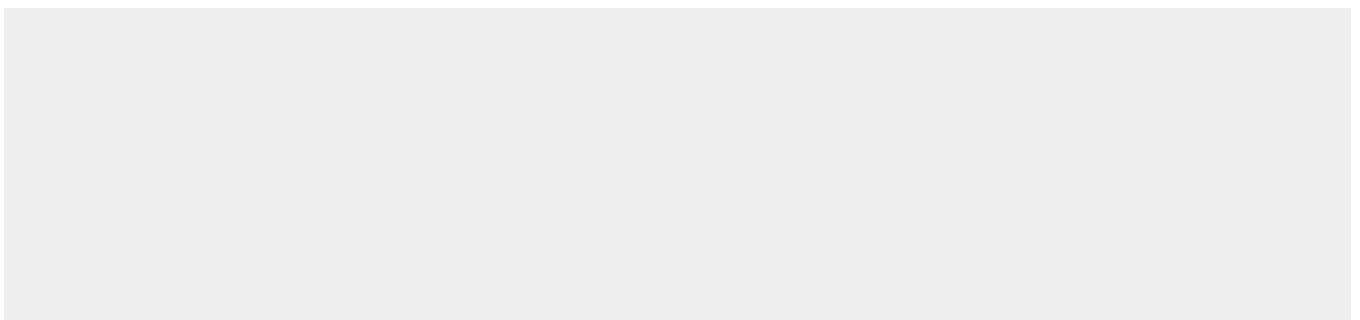
**Tissue Location**

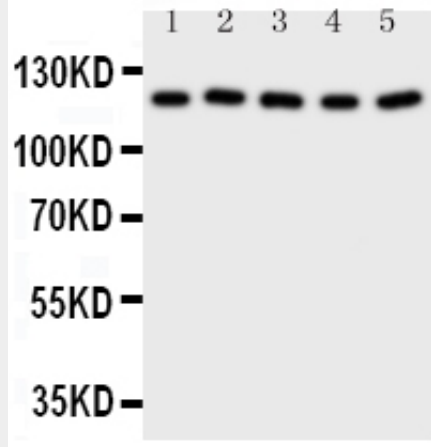
All of the tissues tested and carcinomas.

**Anti-Desmoglein 2 Antibody - Protocols**

Provided below are standard protocols that you may find useful for product applications.

- [Western Blot](#)
- [Blocking Peptides](#)
- [Dot Blot](#)
- [Immunohistochemistry](#)
- [Immunofluorescence](#)
- [Immunoprecipitation](#)
- [Flow Cytometry](#)
- [Cell Culture](#)

**Anti-Desmoglein 2 Antibody - Images**



Anti-Desmoglein 2 antibody, ABO10877, Western blotting All lanes: Anti Desmoglein 2 (ABO10877) at 0.5ug/ml Lane 1: HT1080 Whole Cell Lysate at 40ug Lane 2: HELA Whole Cell Lysate at 40ug Lane 3: SW620 Whole Cell Lysate at 40ug Lane 4: SCG Whole Cell Lysate at 40ug Lane 5: COLO320 Whole Cell Lysate at 40ug Predicted bind size: 122KD Observed bind size: 122KD

#### **Anti-Desmoglein 2 Antibody - Background**

Desmoglein-2 is a protein that in humans is encoded by the DSG2 gene. These desmoglein gene family members are located in a cluster on chromosome 18. This second family member is expressed in colon, colon carcinoma, and other simple and stratified epithelial-derived cell lines. Mutations in DSG2 display a high degree of penetrance. Disease expression was of variable severity with LV involvement a prominent feature. The low prevalence of classical ECG changes highlights the need to expand current diagnostic criteria to take account of LV disease, childhood disease expression, and incomplete penetrance.