

Anti-CTBP2 Antibody
Catalog # ABO10872**Specification**

Anti-CTBP2 Antibody - Product Information

Application	WB, IHC, ICC
Primary Accession	P56545
Host	Rabbit
Reactivity	Human, Mouse, Rat
Clonality	Polyclonal
Format	Lyophilized

Description

Rabbit IgG polyclonal antibody for C-terminal-binding protein 2(CTBP2) detection. Tested with WB, IHC-P, IHC-F, ICC in Human;Mouse;Rat.

Reconstitution

Add 0.2ml of distilled water will yield a concentration of 500ug/ml.

Anti-CTBP2 Antibody - Additional Information

Gene ID 1488

Other Names

C-terminal-binding protein 2, CtBP2, CTBP2

Calculated MW

48945 MW KDa

Application Details

Immunocytochemistry , 0.5-1 µg/ml, Human, -
Immunohistochemistry(Frozen Section), 0.5-1 µg/ml, Mouse, Rat, Human
Immunohistochemistry(Paraffin-embedded Section), 0.5-1 µg/ml, Human, Mouse, Rat, By Heat
Western blot, 0.1-0.5 µg/ml, Human, Rat, Mouse

Subcellular Localization

Nucleus . Cell junction, synapse .

Tissue Specificity

Ubiquitous. Highest levels in heart, skeletal muscle, and pancreas.

Protein Name

C-terminal-binding protein 2(CtBP2)

Contents

Each vial contains 5mg BSA, 0.9mg NaCl, 0.2mg Na₂HPO₄, 0.05mg Thimerosal, 0.05mg NaN₃.

Immunogen

A synthetic peptide corresponding to a sequence at the C-terminus of human CTBP2(429-445aa PNQPTKHGDNREHPNEQ), identical to the related rat and mouse sequences.

Purification

Immunogen affinity purified.

Cross Reactivity

No cross reactivity with other proteins

Storage

At -20°C for one year. After reconstitution, at 4°C for one month. It can also be aliquotted and stored frozen at -20°C for a longer time. Avoid repeated freezing and thawing.

Anti-CTBP2 Antibody - Protein Information

Name CTBP2

Function

Corepressor targeting diverse transcription regulators. Functions in brown adipose tissue (BAT) differentiation (By similarity).

Cellular Location

Nucleus. Synapse.

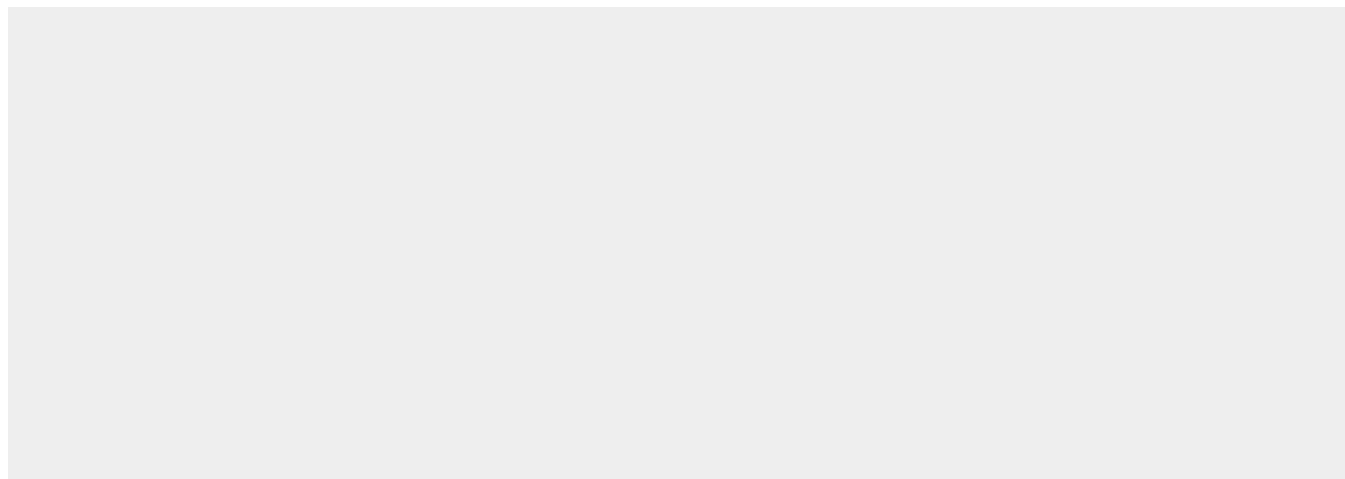
Tissue Location

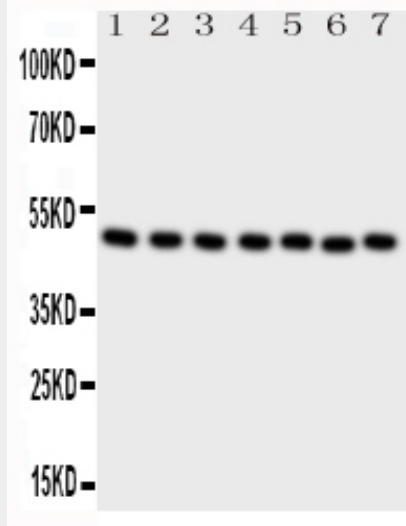
Ubiquitous. Highest levels in heart, skeletal muscle, and pancreas

Anti-CTBP2 Antibody - Protocols

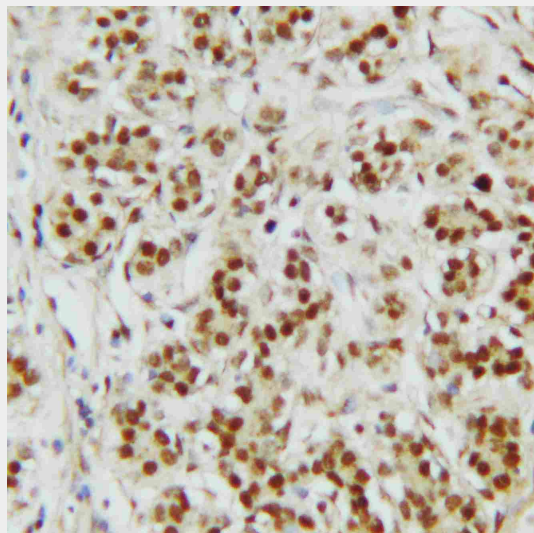
Provided below are standard protocols that you may find useful for product applications.

- [Western Blot](#)
- [Blocking Peptides](#)
- [Dot Blot](#)
- [Immunohistochemistry](#)
- [Immunofluorescence](#)
- [Immunoprecipitation](#)
- [Flow Cytometry](#)
- [Cell Culture](#)

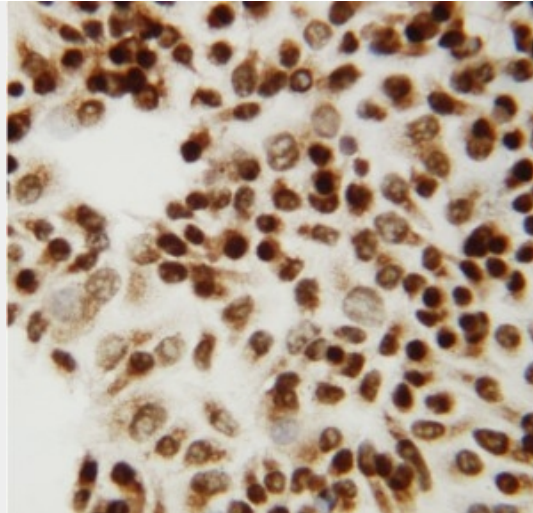
Anti-CTBP2 Antibody - Images



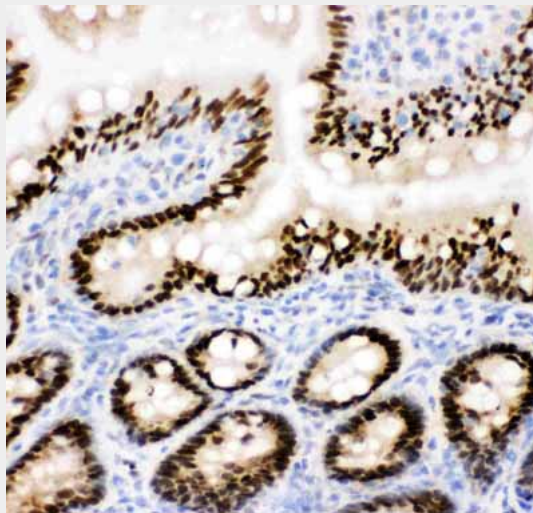
Anti-CTBP2 antibody, ABO10872, Western blotting All lanes: Anti CTBP2 (ABO10872) at 0.5ug/ml
Lane 1: Rat Brain Tissue Lysate at 50ug
Lane 2: Rat Spleen Tissue Lysate at 50ug
Lane 3: HELA Whole Cell Lysate at 40ug
Lane 4: 293T Whole Cell Lysate at 40ug
Lane 5: COLO320 Whole Cell Lysate at 40ug
Lane 6: U87 Whole Cell Lysate at 40ug
Lane 7: SW620 Whole Cell Lysate at 40ug
Predicted bind size: 49KD
Observed bind size: 49KD



Anti-CTBP2 antibody, ABO10872, IHC(P) IHC(P): Human Mammary Cancer Tissue



Anti-CTBP2 antibody, ABO10872, ICC/ICC: HELA Cell



Anti-CTBP2 antibody, ABO10872, IHC(F)/IHC(F): Rat Intestine Tissue

Anti-CTBP2 Antibody - Background

The E1a region of group C adenoviruses encodes 2 nearly identical proteins that are largely responsible for the oncogenic properties of adenoviruses. The CTBP1 protein binds to the C-terminal half of these E1A proteins. It's predicted that CTBP2 is a 445-amino acid protein and it is 72% identical to CTBP1. The CTBP2 gene is mapped to chromosome 10q26.13. CTBP2 is a mammalian corepressor that targets diverse transcriptional regulators. It bounds the short medial portion of delta-EF1 containing the PLDLSL motif and it enhances transrepression activity of delta-EF1.