

**Anti-Collagen IV Antibody**  
Catalog # ABO10853**Specification**

---

**Anti-Collagen IV Antibody - Product Information**

Application	<b>WB</b>
Primary Accession	<a href="#">P02462</a>
Host	<b>Rabbit</b>
Reactivity	<b>Human, Mouse, Rat</b>
Clonality	<b>Polyclonal</b>
Format	<b>Lyophilized</b>

**Description**

Rabbit IgG polyclonal antibody for Collagen alpha-1(IV) chain(COL4A1) detection. Tested with WB in Human;Mouse;Rat.

**Reconstitution**

Add 0.2ml of distilled water will yield a concentration of 500ug/ml.

**Anti-Collagen IV Antibody - Additional Information**

**Gene ID** 1282

**Other Names**

Collagen alpha-1(IV) chain, Arresten, COL4A1

**Calculated MW**

160615 MW KDa

**Application Details**

Western blot, 0.1-0.5 µg/ml, Human, Rat, Mouse<br>

**Subcellular Localization**

Secreted, extracellular space, extracellular matrix, basement membrane.

**Tissue Specificity**

Highly expressed in placenta. .

**Protein Name**

Collagen alpha-1(IV) chain

**Contents**

Each vial contains 5mg BSA, 0.9mg NaCl, 0.2mg Na<sub>2</sub>HPO<sub>4</sub>, 0.05mg Thimerosal, 0.05mg NaN<sub>3</sub>.

**Immunogen**

A synthetic peptide corresponding to a sequence at the C-terminus of human Collagen IV(1654-1669aa ELRTHVSRQVCMRRT), identical to the related rat and mouse sequence.

**Purification**

Immunogen affinity purified.

### Cross Reactivity

No cross reactivity with other proteins

### Storage

At -20°C for one year. After reconstitution, at 4°C for one month. It can also be aliquotted and stored frozen at -20°C for a longer time. Avoid repeated freezing and thawing.

### Sequence Similarities

Belongs to the type IV collagen family.

## Anti-Collagen IV Antibody - Protein Information

Name COL4A1 ([HGNC:2202](#))

### Function

Type IV collagen is the major structural component of glomerular basement membranes (GBM), forming a 'chicken-wire' meshwork together with laminins, proteoglycans and entactin/nidogen.

### Cellular Location

Secreted, extracellular space, extracellular matrix, basement membrane  
{ECO:0000250|UniProtKB:P02463}

### Tissue Location

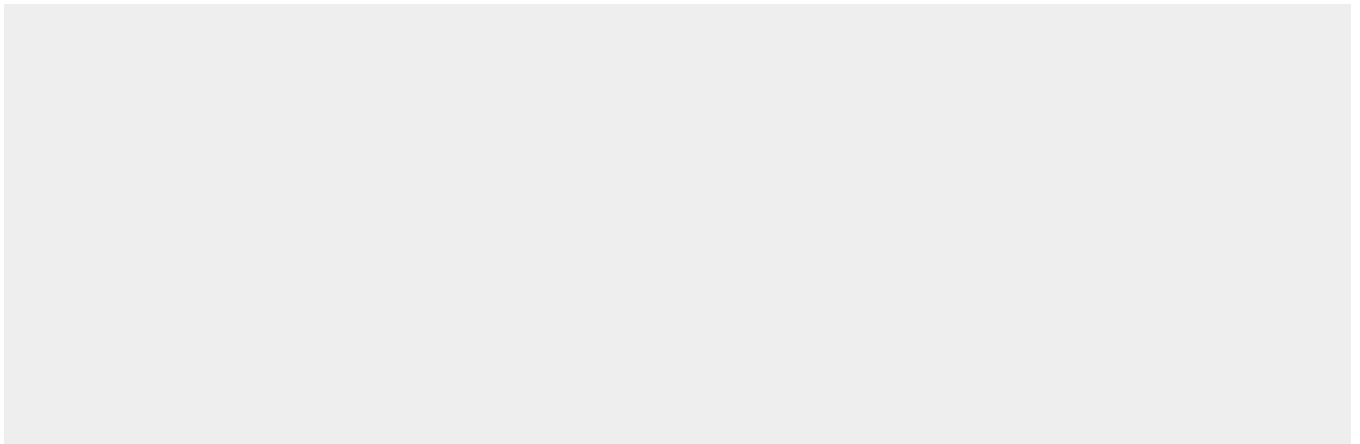
Highly expressed in placenta.

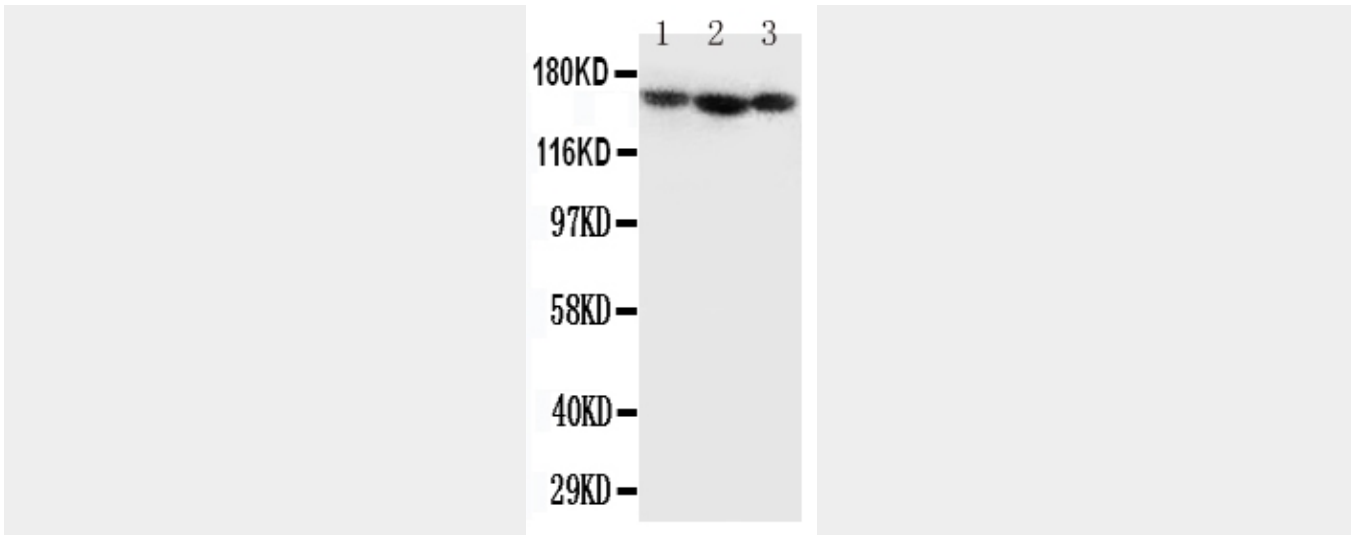
## Anti-Collagen IV Antibody - Protocols

Provided below are standard protocols that you may find useful for product applications.

- [Western Blot](#)
- [Blocking Peptides](#)
- [Dot Blot](#)
- [Immunohistochemistry](#)
- [Immunofluorescence](#)
- [Immunoprecipitation](#)
- [Flow Cytometry](#)
- [Cell Culture](#)

## Anti-Collagen IV Antibody - Images





Anti-Collagen IV antibody, ABO10853, Western blotting Lane 1: MCF-7 Cell Lysate Lane 2: SCG Cell Lysate Lane 3: SW620 Cell Lysate

#### **Anti-Collagen IV Antibody - Background**

Collagen alpha-1(IV) chain is a protein that in humans is encoded by the COL4A1 gene. Type IV collagen is the major structural component of glomerular basement membranes (GBM), forming a 'chicken-wire' meshwork together with laminins, proteoglycans and entactin/nidogen. Like the other members of the type IV collagen gene family, this gene is organized in a head-to-head conformation with another type IV collagen gene so that each gene pair shares a common promoter. Mutations in COL4A1 exons 24 and 25 are associated with HANAC (autosomal dominant hereditary angiopathy with nephropathy, aneurysms, and muscle cramps).