

Anti-CD90/Thy1 Antibody
Catalog # ABO10833**Specification**

Anti-CD90/Thy1 Antibody - Product Information

Application	WB
Primary Accession	P04216
Host	Rabbit
Reactivity	Human, Mouse, Rat
Clonality	Polyclonal
Format	Lyophilized

Description

Rabbit IgG polyclonal antibody for Thy-1 membrane glycoprotein(THY1) detection. Tested with WB in Human;Mouse;Rat.

Reconstitution

Add 0.2ml of distilled water will yield a concentration of 500ug/ml.

Anti-CD90/Thy1 Antibody - Additional Information

Gene ID 7070

Other Names

Thy-1 membrane glycoprotein, CDw90, Thy-1 antigen, CD90, THY1

Calculated MW

17935 MW KDa

Application Details

Western blot, 0.1-0.5 µg/ml, Rat, Human, Mouse

Subcellular Localization

Cell membrane ; Lipid-anchor, GPI-anchor .

Protein Name

Thy-1 membrane glycoprotein

Contents

Each vial contains 5mg BSA, 0.9mg NaCl, 0.2mg Na₂HPO₄, 0.05mg Thimerosal, 0.05mg NaN₃.

Immunogen

A synthetic peptide corresponding to a sequence at the N-terminus of human CD90(20-39aa QKVTS~~LT~~ACLVDQSLRLDCR), different from the related mouse sequence by two amino acids, and from the related rat sequence by four amino acids.

Purification

Immunogen affinity purified.

Cross Reactivity

No cross reactivity with other proteins

Storage

At -20°C for one year. After reconstitution, at 4°C for one month. It can also be aliquotted and stored frozen at -20°C for a longer time. Avoid repeated freezing and thawing.

Sequence Similarities

Contains 1 Ig-like V-type (immunoglobulin-like) domain.

Anti-CD90/Thy1 Antibody - Protein Information

Name THY1

Function

May play a role in cell-cell or cell-ligand interactions during synaptogenesis and other events in the brain.

Cellular Location

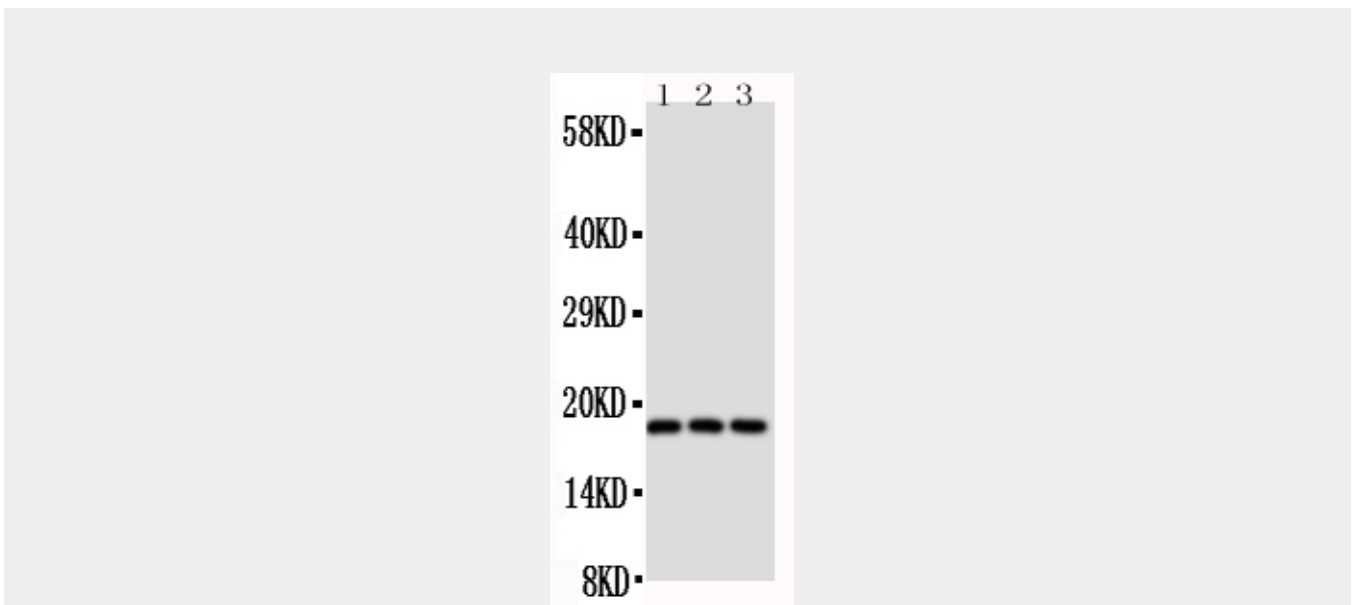
Cell membrane; Lipid-anchor, GPI- anchor

Anti-CD90/Thy1 Antibody - Protocols

Provided below are standard protocols that you may find useful for product applications.

- [Western Blot](#)
- [Blocking Peptides](#)
- [Dot Blot](#)
- [Immunohistochemistry](#)
- [Immunofluorescence](#)
- [Immunoprecipitation](#)
- [Flow Cytometry](#)
- [Cell Culture](#)

Anti-CD90/Thy1 Antibody - Images



Anti-CD90/Thy1 antibody, ABO10833, Western blotting
Lane 1: Rat Brain Tissue Lysate
Lane 2: Rat Liver Tissue Lysate
Lane 3: Rat Thymus Tissue Lysate

Anti-CD90/Thy1 Antibody - Background

CD90 (Cluster of Differentiation 90) or Thy-1 is a 25-37 kDa heavily N-glycosylated, glycosphosphatidylinositol (GPI) anchored conserved cell surface protein with a single V-like immunoglobulin domain, originally discovered as a thymocyte antigen. The CD90 gene is mapped to 11q23.3. Thy-1 can be used as a marker for a variety of stem cells and for the axonal processes of mature neurons. Structural study of Thy-1 led to the foundation of the Immunoglobulin superfamily, of which it is the smallest member, and led to the first biochemical description and characterization of a vertebrate GPI anchor.