

**Anti-BCAT2 Antibody**  
Catalog # ABO10820**Specification**

---

**Anti-BCAT2 Antibody - Product Information**

Application	<b>WB, IHC</b>
Primary Accession	<a href="#">O15382</a>
Host	<b>Rabbit</b>
Reactivity	<b>Human</b>
Clonality	<b>Polyclonal</b>
Format	<b>Lyophilized</b>

**Description**

Rabbit IgG polyclonal antibody for Branched-chain-amino-acid aminotransferase, mitochondrial(BCAT2) detection. Tested with WB, IHC-P in Human.

**Reconstitution**

Add 0.2ml of distilled water will yield a concentration of 500ug/ml.

**Anti-BCAT2 Antibody - Additional Information**

**Gene ID** 587

**Other Names**

Branched-chain-amino-acid aminotransferase, mitochondrial, BCAT(m), 2.6.1.42, Placental protein 18, PP18, BCAT2, BCATM, BCT2, ECA40

**Calculated MW**

44288 MW KDa

**Application Details**

Immunohistochemistry(Paraffin-embedded Section), 0.5-1 µg/ml, Human, By Heat<br>Western blot, 0.1-0.5 µg/ml, Human<br>

**Subcellular Localization**

Isoform A: Mitochondrion.

**Tissue Specificity**

Ubiquitous.

**Protein Name**

Branched-chain-amino-acid aminotransferase, mitochondrial(BCAT(m))

**Contents**

Each vial contains 5mg BSA, 0.9mg NaCl, 0.2mg Na<sub>2</sub>HPO<sub>4</sub>, 0.05mg Thimerosal, 0.05mg NaN<sub>3</sub>.

**Immunogen**

A synthetic peptide corresponding to a sequence at the C-terminus of human BCAT2(377-392aa KEIQYGIRAHWMFPV).

**Purification**

Immunogen affinity purified.

**Cross Reactivity**

No cross reactivity with other proteins

**Storage**

**At -20°C for one year. After r°Constitution, at 4°C for one month. It°Can also be aliquotted and stored frozen at -20°C for a longer time.Avoid repeated freezing and thawing.**

**Sequence Similarities**

Belongs to the class-IV pyridoxal-phosphate-dependent aminotransferase family.

**Anti-BCAT2 Antibody - Protein Information****Name** BCAT2**Function**

Catalyzes the first reaction in the catabolism of the essential branched chain amino acids leucine, isoleucine, and valine (PubMed:<a href="http://www.uniprot.org/citations/17050531" target="\_blank">17050531</a>, PubMed:<a href="http://www.uniprot.org/citations/25653144" target="\_blank">25653144</a>, PubMed:<a href="http://www.uniprot.org/citations/8702755" target="\_blank">8702755</a>). May also function as a transporter of branched chain alpha-keto acids (By similarity).

**Cellular Location**

Mitochondrion {ECO:0000250|UniProtKB:O35854}.

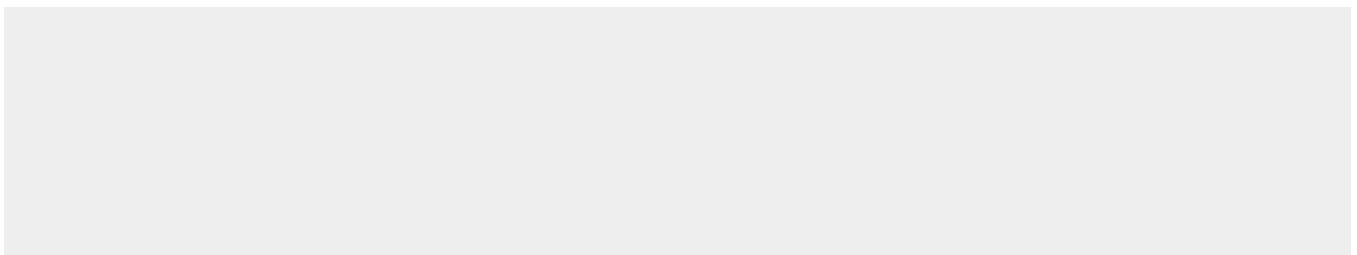
**Tissue Location**

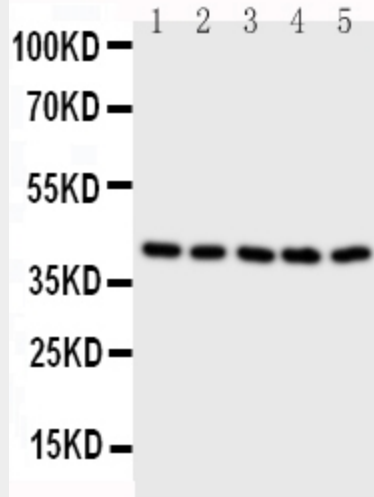
Ubiquitous..

**Anti-BCAT2 Antibody - Protocols**

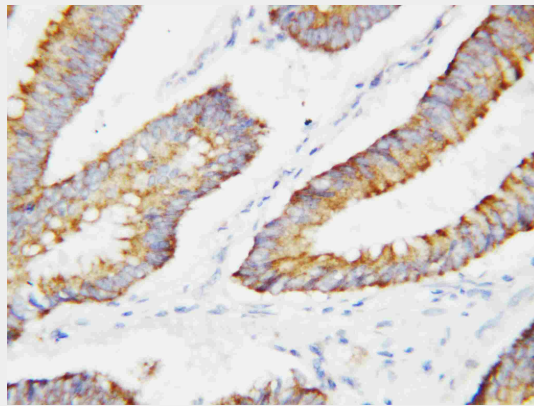
Provided below are standard protocols that you may find useful for product applications.

- [Western Blot](#)
- [Blocking Peptides](#)
- [Dot Blot](#)
- [Immunohistochemistry](#)
- [Immunofluorescence](#)
- [Immunoprecipitation](#)
- [Flow Cytometry](#)
- [Cell Culture](#)

**Anti-BCAT2 Antibody - Images**



Anti-BCAT2 antibody, ABO10820, Western blotting All lanes: Anti BCAT2 (ABO10820) at 0.5ug/ml Lane 1: A431 Whole Cell Lysate at 40ug Lane 2: SW620 Whole Cell Lysate at 40ug Lane 3: SMMC Whole Cell Lysate at 40ug Lane 4: JURKAT Whole Cell Lysate at 40ug Lane 5: CEM Whole Cell Lysate at 40ug Predicted bind size: 41KD Observed bind size: 41KD



Anti-BCAT2 antibody, ABO10820, IHC(P) IHC(P): Human Colon Cancer Tissue

### Anti-BCAT2 Antibody - Background

BCAT2, branched-chain aminotransferase 2, encodes a branched chain aminotransferase found in mitochondria. The encoded protein forms a dimer that catalyzes the first step in the production of the branched chain amino acids leucine, isoleucine, and valine. Multiple transcript variants encoding different isoforms have been found for this gene. The human BCAT2 gene is mapped to 19q13.