

Anti-CAMKK2 Antibody
Catalog # ABO10816**Specification****Anti-CAMKK2 Antibody - Product Information**

Application	WB, IHC
Primary Accession	Q96RR4
Host	Rabbit
Reactivity	Human, Mouse, Rat
Clonality	Polyclonal
Format	Lyophilized

Description

Rabbit IgG polyclonal antibody for Calcium/calmodulin-dependent protein kinase kinase 2(CAMKK2) detection. Tested with WB, IHC-P, ICC in Human;Mouse;Rat.

Reconstitution

Add 0.2ml of distilled water will yield a concentration of 500ug/ml.

Anti-CAMKK2 Antibody - Additional Information

Gene ID 10645

Other Names

Calcium/calmodulin-dependent protein kinase kinase 2, CaM-KK 2, CaM-kinase kinase 2, CaMKK 2, 2.7.11.17, Calcium/calmodulin-dependent protein kinase kinase beta, CaM-KK beta, CaM-kinase kinase beta, CaMKK beta, CAMKK2, CAMKKB, KIAA0787

Calculated MW

64746 MW KDa

Application Details

Immunocytochemistry , 0.5-1 µg/ml, Human, Mouse, Rat
Immunohistochemistry(Paraffin-embedded Section), 0.5-1 µg/ml, Mouse, Human, Rat, By Heat
Western blot, 0.1-0.5 µg/ml, Human, Mouse, Rat

Subcellular Localization

Nucleus . Cytoplasm . Cell projection . Predominantly nuclear in unstimulated cells (By similarity). Found in the cytoplasm and neurites after forskolin induction. .

Tissue Specificity

Ubiquitously expressed with higher levels in the brain. Intermediate levels are detected in spleen, prostate, thyroid and leukocytes. The lowest level is in lung. .

Protein Name

Calcium/calmodulin-dependent protein kinase kinase 2(CaM-KK 2/CaM-kinase kinase 2/CaMKK 2)

Contents

Each vial contains 5mg BSA, 0.9mg NaCl, 0.2mg Na₂HPO₄, 0.05mg Thimerosal, 0.05mg NaN₃.

Immunogen

A synthetic peptide corresponding to a sequence in the middle region of human CAMKK2(180-194aa KLAYNENDNTYYAMK), identical to the related rat and mouse sequences.

Purification

Immunogen affinity purified.

Cross Reactivity

No cross reactivity with other proteins

Storage

At -20°C for one year. After reconstitution, at 4°C for one month. It can also be aliquotted and stored frozen at -20°C for a longer time. Avoid repeated freezing and thawing.

Sequence Similarities

Belongs to the protein kinase superfamily. Ser/Thr protein kinase family.

Anti-CAMKK2 Antibody - Protein Information

Name CAMKK2

Synonyms CAMKKB, KIAA0787

Function

Calcium/calmodulin-dependent protein kinase belonging to a proposed calcium-triggered signaling cascade involved in a number of cellular processes. Isoform 1, isoform 2 and isoform 3 phosphorylate CAMK1 and CAMK4. Isoform 3 phosphorylates CAMK1D. Isoform 4, isoform 5 and isoform 6 lacking part of the calmodulin-binding domain are inactive. Efficiently phosphorylates 5'-AMP-activated protein kinase (AMPK) trimer, including that consisting of PRKAA1, PRKAB1 and PRKAG1. This phosphorylation is stimulated in response to Ca(2+) signals (By similarity). Seems to be involved in hippocampal activation of CREB1 (By similarity). May play a role in neurite growth. Isoform 3 may promote neurite elongation, while isoform 1 may promote neurite branching.

Cellular Location

Nucleus. Cytoplasm. Cell projection, neuron projection. Note=Predominantly nuclear in unstimulated cells, relocalizes into cytoplasm and neurites after forskolin induction.

Tissue Location

Ubiquitously expressed with higher levels in the brain. Intermediate levels are detected in spleen, prostate, thyroid and leukocytes. The lowest level is in lung

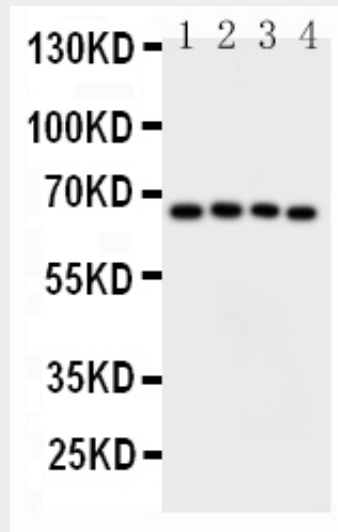
Anti-CAMKK2 Antibody - Protocols

Provided below are standard protocols that you may find useful for product applications.

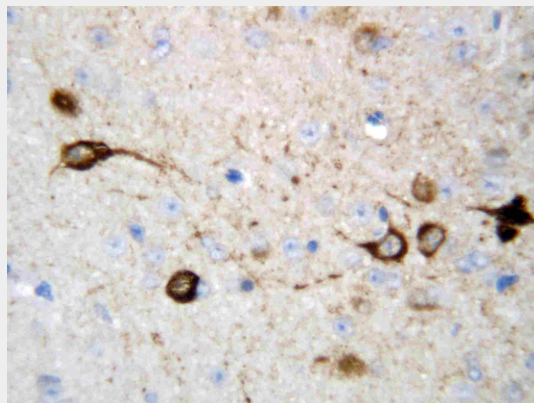
- [Western Blot](#)
- [Blocking Peptides](#)
- [Dot Blot](#)
- [Immunohistochemistry](#)
- [Immunofluorescence](#)
- [Immunoprecipitation](#)
- [Flow Cytometry](#)

- [Cell Culture](#)

Anti-CAMKK2 Antibody - Images



Anti-CAMKK2 antibody, ABO10816, Western blotting Lane 1: Rat Brain Tissue Lysate Lane 2: Rat Brain Tissue Lysate Lane 3: Mouse Brain Tissue Lysate Lane 4: Mouse Brain Tissue Lysate



Anti-CAMKK2 antibody, ABO10816, IHC(P) IHC(P): Rat Brain Tissue

Anti-CAMKK2 Antibody - Background

CAMKK2, Calcium/calmodulin-dependent protein kinase kinase 2, is an enzyme that in humans is encoded by the CAMKK2 gene. The product of this gene belongs to the serine/threonine-specific protein kinase family, and to the Ca⁺⁺/calmodulin-dependent protein kinase subfamily. This protein plays a role in the calcium/calmodulin-dependent (CaM) kinase cascade by phosphorylating the downstream kinases CaMK1 and CaMK4. CaMKK2 regulates production of the appetite stimulating hormone neuropeptide Y and functions as an AMPK kinase in the hypothalamus. It also has an important role in the development of hyperalgesia and tolerance to opioid analgesic drugs, through reduction in downstream signalling pathways and mu opioid receptor downregulation. Inhibition of CaMKK2 in mice reduces appetite and promotes weight loss.