

Anti-Alpha Amylase 1 Antibody
Catalog # ABO10805**Specification**

Anti-Alpha Amylase 1 Antibody - Product Information

Application	WB, IHC
Primary Accession	P04745
Host	Rabbit
Reactivity	Human, Mouse, Rat
Clonality	Polyclonal
Format	Lyophilized

Description

Rabbit IgG polyclonal antibody for Alpha-amylase 1(AMY1A) detection. Tested with WB, IHC-P in Human;Mouse;Rat.

Reconstitution

Add 0.2ml of distilled water will yield a concentration of 500ug/ml.

Anti-Alpha Amylase 1 Antibody - Additional Information**Other Names**

Alpha-amylase 1, 3.2.1.1, 1, 4-alpha-D-glucan glucohydrolase 1, Salivary alpha-amylase, AMY1A, AMY1

Calculated MW

57768 MW KDa

Application Details

Immunohistochemistry(Paraffin-embedded Section), 0.5-1 µg/ml, Rat, Human, Mouse, By Heat
Western blot, 0.1-0.5 µg/ml, Human, Rat, Mouse

Subcellular Localization

Secreted.

Protein Name

Alpha-amylase 1

Contents

Each vial contains 5mg BSA, 0.9mg NaCl, 0.2mg Na₂HPO₄, 0.05mg Thimerosal, 0.05mg NaN₃.

Immunogen

A synthetic peptide corresponding to a sequence at the N-terminus of human Alpha Amylase 1(30-44aa HLFWRWVDIALECE), different from the related rat and mouse sequences by one amino acid.

Purification

Immunogen affinity purified.

Cross Reactivity

No cross reactivity with other proteins

Storage

At -20°C for one year. After r°Constitution, at 4°C for one month. It°Can also be aliquotted and stored frozen at -20°C for a longer time.Avoid repeated freezing and thawing.

Sequence Similarities

Belongs to the glycosyl hydrolase 13 family.

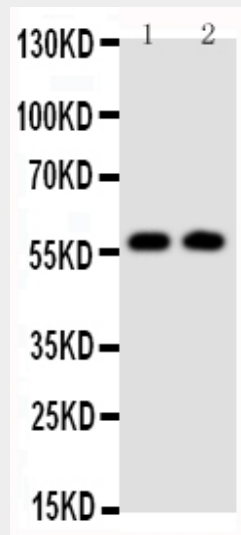
Anti-Alpha Amylase 1 Antibody - Protein Information

Anti-Alpha Amylase 1 Antibody - Protocols

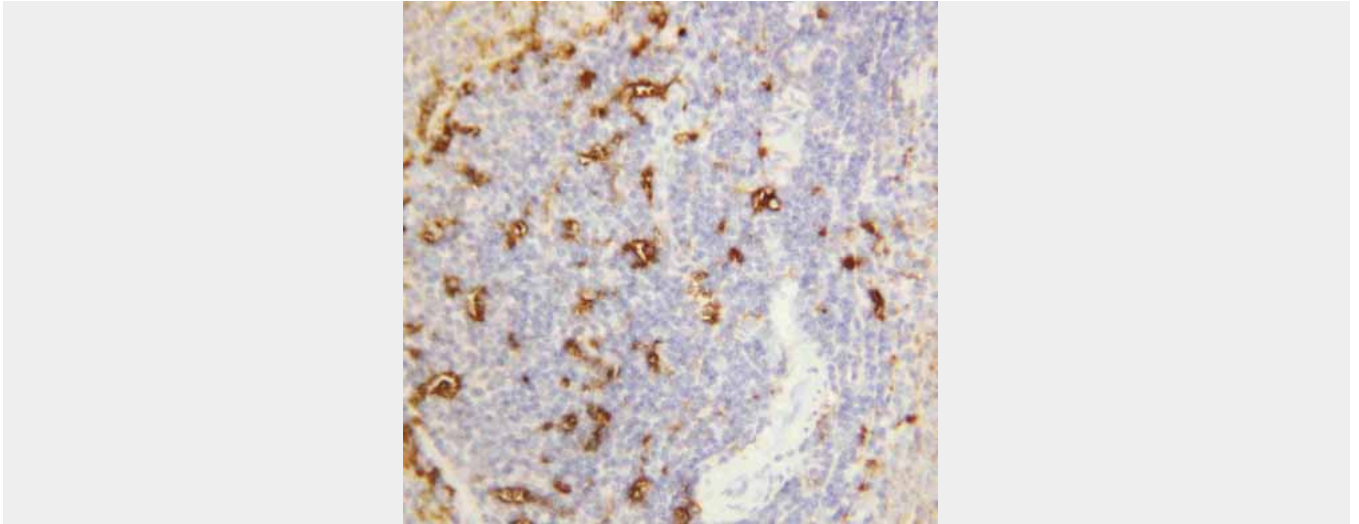
Provided below are standard protocols that you may find useful for product applications.

- [Western Blot](#)
- [Blocking Peptides](#)
- [Dot Blot](#)
- [Immunohistochemistry](#)
- [Immunofluorescence](#)
- [Immunoprecipitation](#)
- [Flow Cytometry](#)
- [Cell Culture](#)

Anti-Alpha Amylase 1 Antibody - Images



Anti-Alpha Amylase 1 antibody, ABO10805, Western blotting
Lane 1: Rat Liver Tissue Lysate
Lane 2: Rat Intestine Tissue Lysate



Anti-Alpha Amylase 1 antibody, ABO10805, IHC(P)IHC(P): Rat Spleen Tissue

Anti-Alpha Amylase 1 Antibody - Background

Amylase is an enzyme that catalyses the breakdown of starch into sugars. Amylase is present in human saliva, where it begins the chemical process of digestion. By in situ hybridization combined with high resolution cytogenetics, the amylase gene is mapped to 1p21. Amylase enzymes find use in bread making and to break down complex sugars such as starch(found in flour) into simple sugars. Yeast then feeds on these simple sugars and converts it into the waste products of alcohol and CO₂.