

Anti-IL-12(p40) Antibody
Catalog # ABO10787**Specification**

Anti-IL-12(p40) Antibody - Product Information

Application	WB
Primary Accession	P29460
Host	Rabbit
Reactivity	Human
Clonality	Polyclonal
Format	Lyophilized

Description

Rabbit IgG polyclonal antibody for Interleukin-12 subunit beta(IL12B) detection. Tested with WB in Human.

Reconstitution

Add 0.2ml of distilled water will yield a concentration of 500ug/ml.

Anti-IL-12(p40) Antibody - Additional Information

Gene ID 3593

Other Names

Interleukin-12 subunit beta, IL-12B, Cytotoxic lymphocyte maturation factor 40 kDa subunit, CLMF p40, IL-12 subunit p40, NK cell stimulatory factor chain 2, NKSF2, IL12B, NKSF2

Calculated MW

37169 MW KDa

Application Details

Western blot, 0.1-0.5 µg/ml, Human

Subcellular Localization

Secreted.

Protein Name

Interleukin-12 subunit beta(IL-12B)

Contents

Each vial contains 5mg BSA, 0.9mg NaCl, 0.2mg Na₂HPO₄, 0.05mg Thimerosal, 0.05mg NaN₃.

Immunogen

A synthetic peptide corresponding to a sequence at the N-terminus of human IL-12(p40)(23-40aa IWELKKDVYVVELDWYPD).

Purification

Immunogen affinity purified.

Cross Reactivity

No cross reactivity with other proteins

Storage

At -20°C for one year. After reconstitution, at 4°C for one month. It can also be aliquotted and stored frozen at -20°C for a longer time. Avoid repeated freezing and thawing.

Sequence Similarities

Belongs to the type I cytokine receptor family. Type 3 subfamily.

Anti-IL-12(p40) Antibody - Protein Information

Name IL12B

Synonyms NKSF2

Function

Cytokine that can act as a growth factor for activated T and NK cells, enhance the lytic activity of NK/lymphokine-activated killer cells, and stimulate the production of IFN-gamma by resting PBMC.

Cellular Location

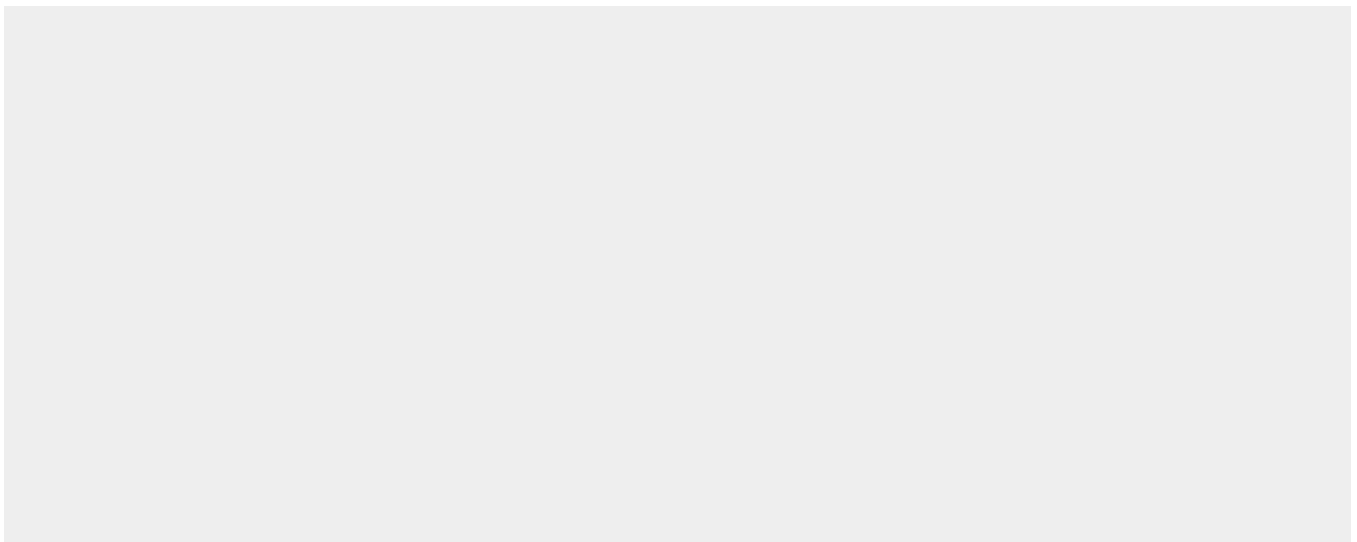
Secreted.

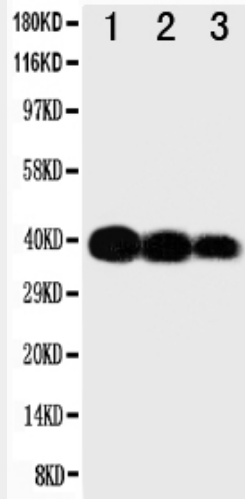
Anti-IL-12(p40) Antibody - Protocols

Provided below are standard protocols that you may find useful for product applications.

- [Western Blot](#)
- [Blocking Peptides](#)
- [Dot Blot](#)
- [Immunohistochemistry](#)
- [Immunofluorescence](#)
- [Immunoprecipitation](#)
- [Flow Cytometry](#)
- [Cell Culture](#)

Anti-IL-12(p40) Antibody - Images





Anti-IL-12(p40) antibody, ABO10787, Western blotting Lane 1: Recombinant Human IL-12 Protein 10ng Lane 2: Recombinant Human IL-12 Protein 5ng Lane 3: Recombinant Human IL-12 Protein 2.5ng

Anti-IL-12(p40) Antibody - Background

IL-12, Interleukin 12, heterodimerizes with the IL12 p35 subunit to form IL12 and with the IL23 p19 subunit to form IL23. IL12b p 40 exists as a monomer and as a homodimer. This gene encodes a subunit of Interleukin 12, a cytokine that acts on T and natural killer cells, and has a broad array of biological activities. The IL-12b gene contains 8 exons, the first and last of which are noncoding. By PCR analysis of DNA from rodent/human cell hybrids containing intact chromosomes or translocation chromosomes, the IL-12b gene is mapped to 5q31-q33. This cytokine has been found to be important for sustaining a sufficient number of memory/effector Th1 cells to mediate long-term protection to an intracellular pathogen.