

Anti-DKK-1 Antibody
Catalog # ABO10781**Specification**

Anti-DKK-1 Antibody - Product Information

Application	WB
Primary Accession	O94907
Host	Rabbit
Reactivity	Human, Mouse, Rat
Clonality	Polyclonal
Format	Lyophilized

Description

Rabbit IgG polyclonal antibody for Dickkopf-related protein 1(DKK1) detection. Tested with WB in Human;Mouse;Rat.

Reconstitution

Add 0.2ml of distilled water will yield a concentration of 500ug/ml.

Anti-DKK-1 Antibody - Additional Information

Gene ID 22943

Other Names

Dickkopf-related protein 1, Dickkopf-1, Dkk-1, hDkk-1, SK, DKK1

Calculated MW

28672 MW KDa

Application Details

Western blot, 0.1-0.5 µg/ml, Human, Mouse, Rat

Subcellular Localization

Secreted.

Tissue Specificity

Placenta.

Protein Name

Dickkopf-related protein 1(Dickkopf-1/Dkk-1/hDkk-1)

Contents

Each vial contains 5mg BSA, 0.9mg NaCl, 0.2mg Na₂HPO₄, 0.05mg Thimerosal, 0.05mg NaN₃.

Immunogen

A synthetic peptide corresponding to a sequence at the N-terminus of human DKK1(68-83aa YPGGNGKYQTIDNYQPY), different from the related mouse and rat sequences by two amino acids.

Purification

Immunogen affinity purified.

Cross Reactivity

No cross reactivity with other proteins

Storage

At -20°C for one year. After r°Constitution, at 4°C for one month. It°Can also be aliquotted and stored frozen at -20°C for a longer time.Avoid repeated freezing and thawing.

Sequence Similarities

Belongs to the dickkopf family.

Anti-DKK-1 Antibody - Protein Information

Name DKK1

Function

Antagonizes canonical Wnt signaling by inhibiting LRP5/6 interaction with Wnt and by forming a ternary complex with the transmembrane protein KREMEN that promotes internalization of LRP5/6 (PubMed:22000856). DKKs play an important role in vertebrate development, where they locally inhibit Wnt regulated processes such as antero-posterior axial patterning, limb development, somitogenesis and eye formation. In the adult, Dkks are implicated in bone formation and bone disease, cancer and Alzheimer disease (PubMed:17143291). Inhibits the pro-apoptotic function of KREMEN1 in a Wnt-independent manner, and has anti-apoptotic activity (By similarity).

Cellular Location

Secreted.

Tissue Location

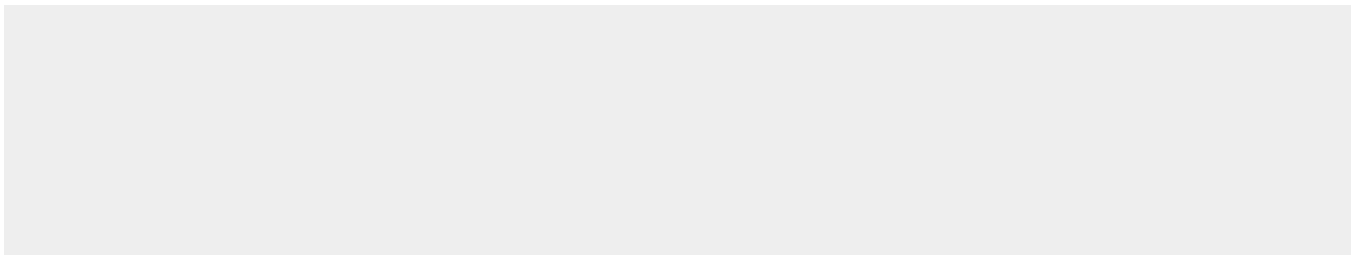
Placenta.

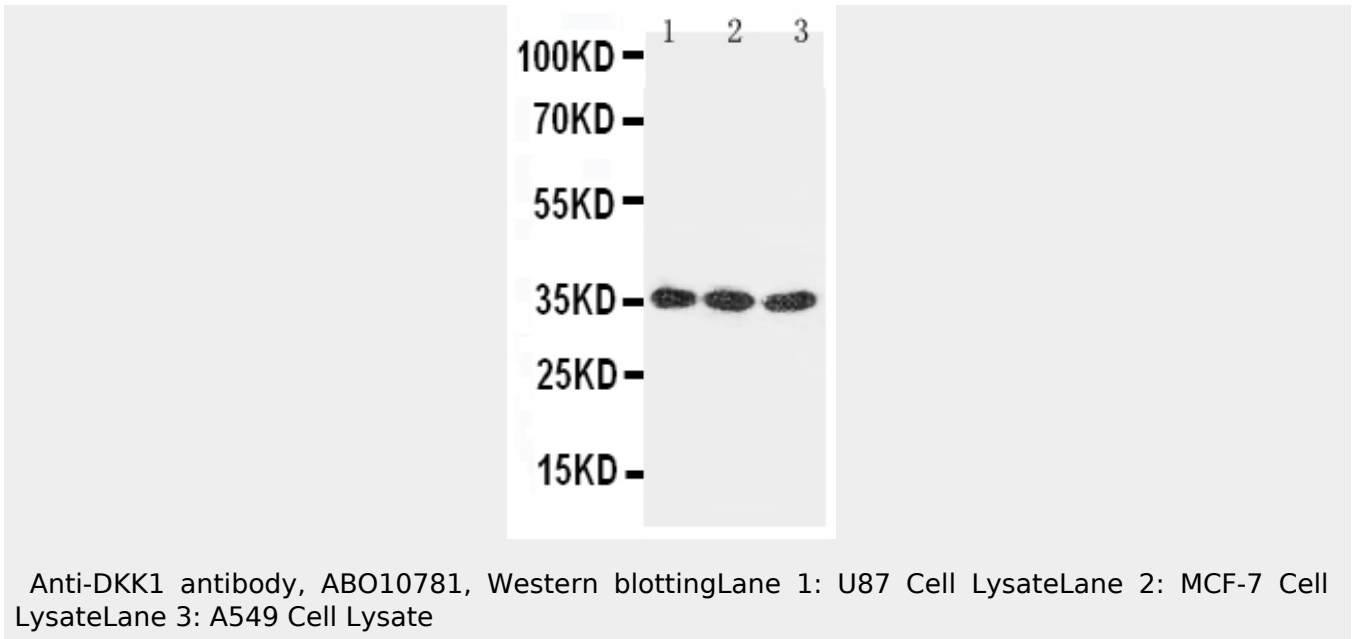
Anti-DKK-1 Antibody - Protocols

Provided below are standard protocols that you may find useful for product applications.

- [Western Blot](#)
- [Blocking Peptides](#)
- [Dot Blot](#)
- [Immunohistochemistry](#)
- [Immunofluorescence](#)
- [Immunoprecipitation](#)
- [Flow Cytometry](#)
- [Cell Culture](#)

Anti-DKK-1 Antibody - Images





Anti-DKK1 antibody, ABO10781, Western blotting Lane 1: U87 Cell Lysate Lane 2: MCF-7 Cell Lysate Lane 3: A549 Cell Lysate

Anti-DKK-1 Antibody - Background

DKK1, Dickkopf-related protein 1, is a protein that in humans is encoded by the DKK1 gene. This gene encodes a protein that is a member of the dickkopf family. By genomic sequence analysis, determined that the DKK1 gene contains 4 exons. The DKK1 gene is mapped to 10q11.2 using FISH. It is a secreted protein with two cysteine rich regions and is involved in embryonic development through its inhibition of the WNT signaling pathway. Elevated levels of DKK1 in bone marrow plasma and peripheral blood is associated with the presence of osteolytic bone lesions in patients with multiple myeloma.