

Anti-GM-CSF Antibody
Catalog # ABO10776**Specification**

Anti-GM-CSF Antibody - Product Information

Application	WB
Primary Accession	P04141
Host	Rabbit
Reactivity	Human
Clonality	Polyclonal
Format	Lyophilized

Description

Rabbit IgG polyclonal antibody for Granulocyte-macrophage colony-stimulating factor(CSF2) detection. Tested with WB in Human.

Reconstitution

Add 0.2ml of distilled water will yield a concentration of 500ug/ml.

Anti-GM-CSF Antibody - Additional Information

Gene ID 1437

Other Names

Granulocyte-macrophage colony-stimulating factor, GM-CSF, Colony-stimulating factor, CSF, Molgramostin, Sargramostim, CSF2, GMCSF

Calculated MW

16295 MW KDa

Application Details

Western blot, 0.1-0.5 µg/ml, Human

Subcellular Localization

Secreted.

Protein Name

Granulocyte-macrophage colony-stimulating factor(GM-CSF)

Contents

Each vial contains 5mg BSA, 0.9mg NaCl, 0.2mg Na₂HPO₄, 0.05mg Thimerosal, 0.05mg NaN₃.

Immunogen

A synthetic peptide corresponding to a sequence in the middle region of human GM-CSF(63-81aa MFDLQEPTCLQTRLELYKQ).

Purification

Immunogen affinity purified.

Cross Reactivity

No cross reactivity with other proteins

Storage

At -20°C for one year. After reconstitution, at 4°C for one month. It can also be aliquotted and stored frozen at -20°C for a longer time. Avoid repeated freezing and thawing.

Sequence Similarities

Belongs to the GM-CSF family.

Anti-GM-CSF Antibody - Protein Information

Name CSF2

Synonyms GMCSF

Function

Cytokine that stimulates the growth and differentiation of hematopoietic precursor cells from various lineages, including granulocytes, macrophages, eosinophils and erythrocytes.

Cellular Location

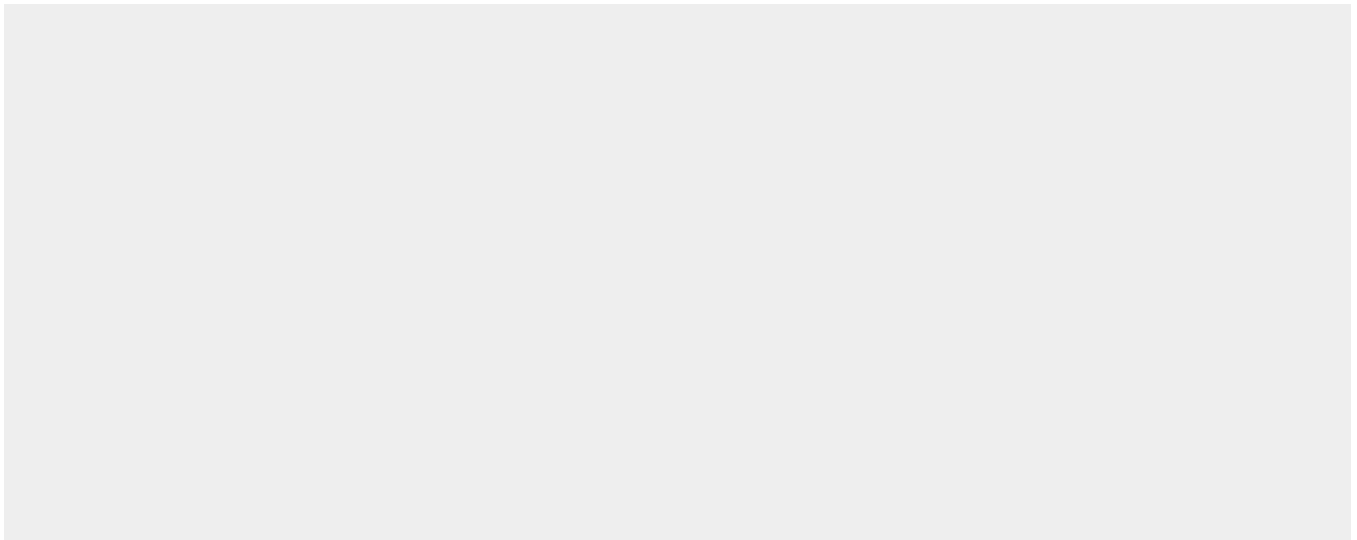
Secreted

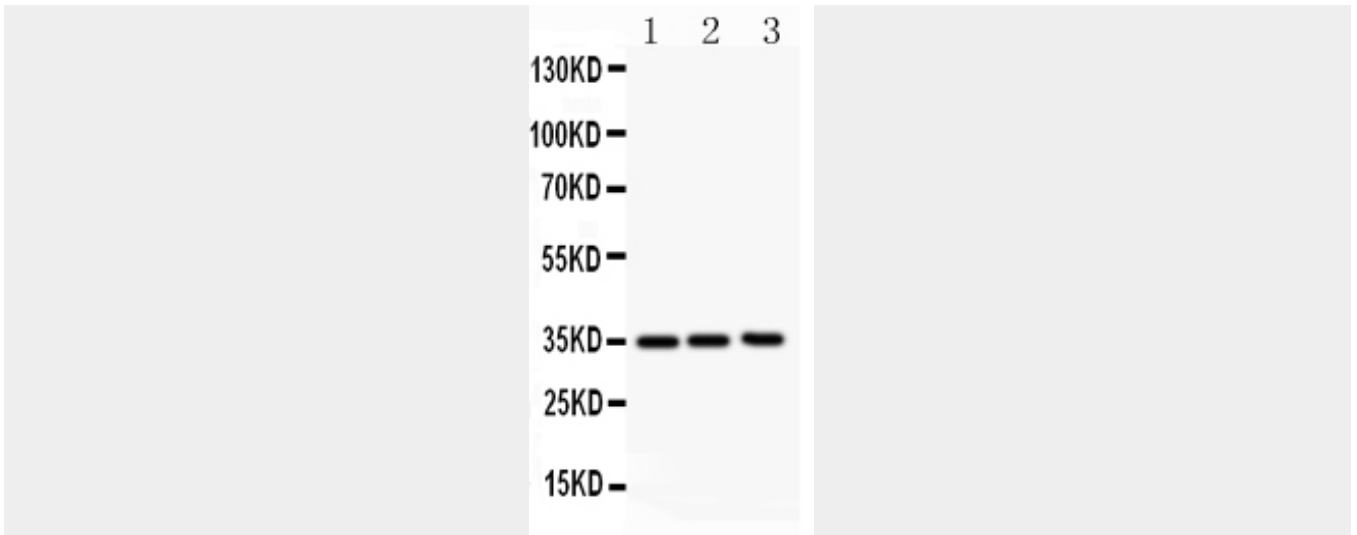
Anti-GM-CSF Antibody - Protocols

Provided below are standard protocols that you may find useful for product applications.

- [Western Blot](#)
- [Blocking Peptides](#)
- [Dot Blot](#)
- [Immunohistochemistry](#)
- [Immunofluorescence](#)
- [Immunoprecipitation](#)
- [Flow Cytometry](#)
- [Cell Culture](#)

Anti-GM-CSF Antibody - Images





Anti- GM-CSF antibody, ABO10776, Western blotting All lanes: Anti GM-CSF (ABO10776) at 0.5ug/ml Lane 1: JURKAT Whole Cell Lysate at 40ug Lane 2: HELA Whole Cell Lysate at 40ug Lane 3: HT1080 Whole Cell Lysate at 40ug Predicted bind size: 16KD Observed bind size: 35KD

Anti-GM-CSF Antibody - Background

GM-CSF, Granulocyte-macrophage colony-stimulating factor, is a protein secreted by macrophages, T cells, mast cells, endothelial cells, and fibroblasts. By fluorescence in situ hybridization, the GM-CSF gene is mapped to 5q31.1. GM-CSF is a cytokine that functions as a white blood cell growth factor. GM-CSF stimulates stem cells to produce granulocytes (neutrophils, eosinophils, and basophils) and monocytes. GM-CSF is an essential regulator of neutrophil function.