

Anti-Annexin VI Antibody
Catalog # ABO10756**Specification****Anti-Annexin VI Antibody - Product Information**

Application	WB, IHC
Primary Accession	P08133
Host	Rabbit
Reactivity	Human, Mouse, Rat
Clonality	Polyclonal
Format	Lyophilized

Description

Rabbit IgG polyclonal antibody for Annexin A6(ANXA6) detection. Tested with WB, IHC-P, IHC-F in Human;Mouse;Rat.

Reconstitution

Add 0.2ml of distilled water will yield a concentration of 500ug/ml.

Anti-Annexin VI Antibody - Additional Information

Gene ID 309

Other Names

Annexin A6, 67 kDa calelectrin, Annexin VI, Annexin-6, Calphobindin-II, CPB-II, Chromobindin-20, Lipocortin VI, Protein III, p68, p70, ANXA6, ANX6

Calculated MW

75873 MW KDa

Application Details

Immunohistochemistry(Frozen Section), 0.5-1 µg/ml, Rat, Human, Mouse
Immunohistochemistry(Paraffin-embedded Section), 0.5-1 µg/ml, Human, Rat, Mouse, By Heat
Western blot, 0.1-0.5 µg/ml, Human, Rat, Mouse

Subcellular Localization

Cytoplasm . Melanosome . Identified by mass spectrometry in melanosome fractions from stage I to stage IV.

Protein Name

Annexin A6

Contents

Each vial contains 5mg BSA, 0.9mg NaCl, 0.2mg Na₂HPO₄, 0.05mg Thimerosal, 0.05mg NaN₃.

Immunogen

A synthetic peptide corresponding to a sequence at the C-terminus of human Annexin VI(636-652aa NIRREFIEKYDKSLHQA), identical to the related mouse and rat sequences.

Purification

Immunogen affinity purified.

Cross Reactivity

No cross reactivity with other proteins

Storage

At -20°C for one year. After reconstitution, at 4°C for one month. It can also be aliquotted and stored frozen at -20°C for a longer time. Avoid repeated freezing and thawing.

Sequence Similarities

Belongs to the annexin family.

Anti-Annexin VI Antibody - Protein Information

Name ANXA6

Synonyms ANX6

Function

May associate with CD21. May regulate the release of Ca(2+) from intracellular stores.

Cellular Location

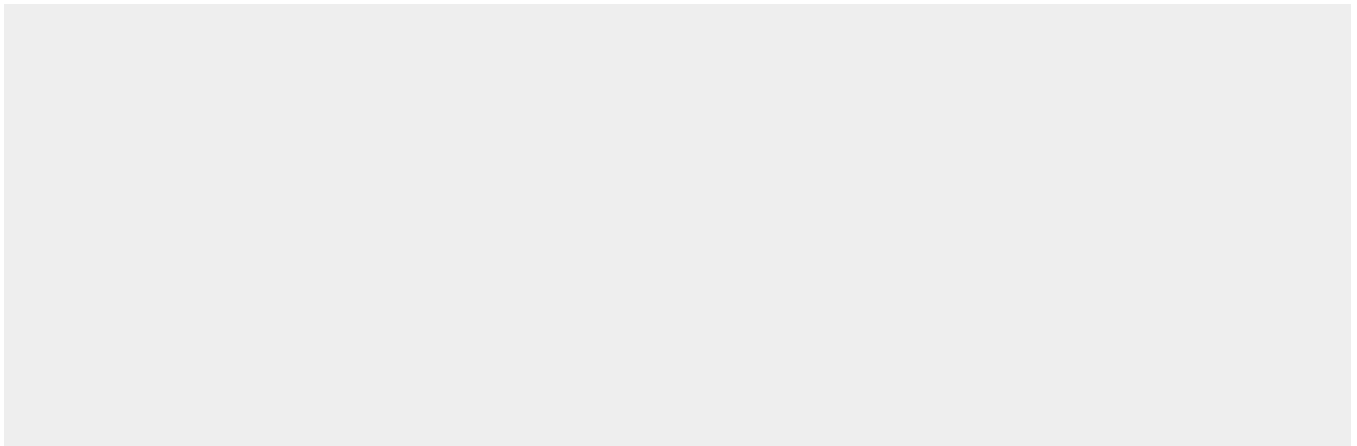
Cytoplasm. Melanosome. Note=Identified by mass spectrometry in melanosome fractions from stage I to stage IV

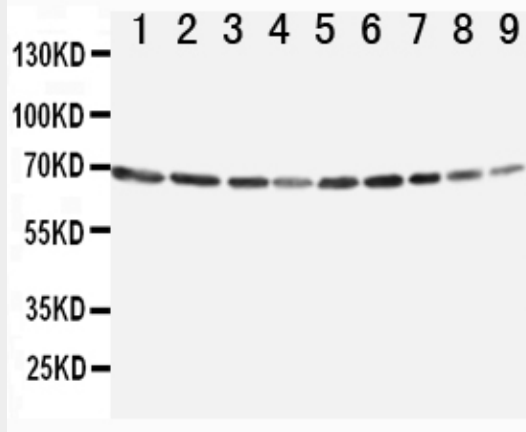
Anti-Annexin VI Antibody - Protocols

Provided below are standard protocols that you may find useful for product applications.

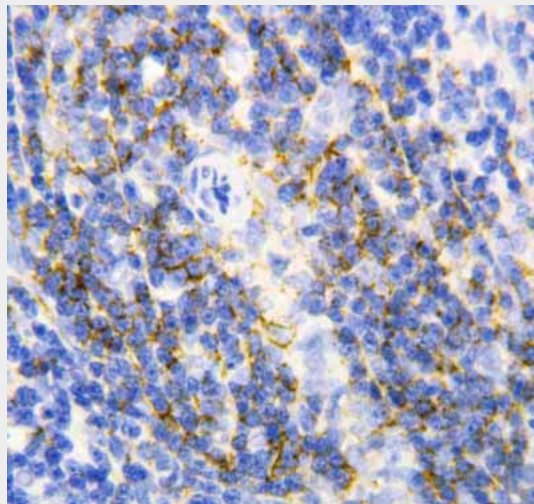
- [Western Blot](#)
- [Blocking Peptides](#)
- [Dot Blot](#)
- [Immunohistochemistry](#)
- [Immunofluorescence](#)
- [Immunoprecipitation](#)
- [Flow Cytometry](#)
- [Cell Culture](#)

Anti-Annexin VI Antibody - Images

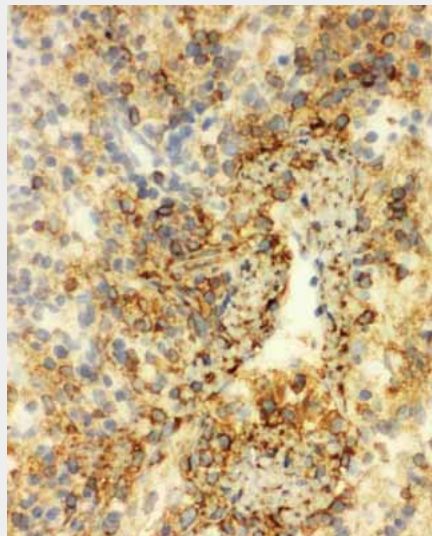




Anti-Annexin VI antibody, ABO10756, Western blotting
Lane 1: Rat Ovary Tissue Lysate
Lane 2: Rat Liver Tissue Lysate
Lane 3: Rat Intestinum Tenue Tissue Lysate
Lane 4: Rat Brain Tissue Lysate
Lane 5: A549 Cell Lysate
Lane 6: JURKAT Cell Lysate
Lane 7: RAJI Cell Lysate
Lane 8: CEM Cell Lysate
Lane 9: SMMC Cell Lysate



Anti-Annexin VI antibody, ABO10756, IHC(P)
IHC(P): Rat Spleen Tissue



Anti-Annexin VI antibody, ABO10756, IHC(F)
IHC(F): Rat Spleen Tissue

Anti-Annexin VI Antibody - Background

Annexin A6(ANXA6) is a member of a family of proteins that bind membrane or cytoskeleton in a Ca^{2+} -dependent manner. These proteins are characterized by homologous amino acid sequences that are present in multiple copies in each protein. ANXA6 gene is assigned to 5q32-q34 by use of a cDNA clone to probe genomic DNA from rodent-human somatic cell hybrids and for in situ hybridization. The ANX6 gene is approximately 60 kb long and contains 26 exons. The genomic sequence at the 3-prime end does not contain a canonical polyadenylation signal. Ca^{2+} -dependent binding between CRHSP28 and ANXA6 is required for acinar cell membrane trafficking events and digestive enzyme secretion