

**Anti-TNFRSF13C/BAFFR Antibody**  
Catalog # ABO10715

**Specification**

---

**Anti-TNFRSF13C/BAFFR Antibody - Product Information**

Application	WB
Primary Accession	<a href="#">O96RJ3</a>
Host	Rabbit
Reactivity	Human
Clonality	Polyclonal
Format	Lyophilized

**Description**

Rabbit IgG polyclonal antibody for Tumor necrosis factor receptor superfamily member 13C(TNFRSF13C) detection. Tested with WB in Human.

**Reconstitution**

Add 0.2ml of distilled water will yield a concentration of 500ug/ml.

**Anti-TNFRSF13C/BAFFR Antibody - Additional Information**

**Gene ID** 115650

**Other Names**

Tumor necrosis factor receptor superfamily member 13C, B-cell-activating factor receptor, BAFF receptor, BAFF-R, BLYS receptor 3, CD268, TNFRSF13C, BAFFR, BR3

**Calculated MW**

18864 MW KDa

**Application Details**

Western blot, 0.1-0.5 µg/ml, Human<br>

**Subcellular Localization**

Membrane ; Single-pass type III membrane protein .

**Tissue Specificity**

Highly expressed in spleen and lymph node, and in resting B-cells. Detected at lower levels in activated B-cells, resting CD4+ T-cells, in thymus and peripheral blood leukocytes.

**Protein Name**

Tumor necrosis factor receptor superfamily member 13C

**Contents**

Each vial contains 5mg BSA, 0.9mg NaCl, 0.2mg Na<sub>2</sub>HPO<sub>4</sub>, 0.05mg Thimerosal, 0.05mg NaN<sub>3</sub>.

**Immunogen**

A synthetic peptide corresponding to a sequence at the N-terminus of human BAFF Receptor(1-15aa MRRGPRSLRGRDAPA).

**Purification**

Immunogen affinity purified.

**Cross Reactivity**

No cross reactivity with other proteins

**Storage**

**At -20°C for one year. After r°Constitution, at 4°C for one month. It°Can also be aliquotted and stored frozen at -20°C for a longer time.Avoid repeated freezing and thawing.**

**Anti-TNFRSF13C/BAFFR Antibody - Protein Information**

**Name** TNFRSF13C

**Synonyms** BAFFR, BR3

**Function**

B-cell receptor specific for TNFSF13B/TALL1/BAFF/BLyS. Promotes the survival of mature B-cells and the B-cell response.

**Cellular Location**

Membrane; Single-pass type III membrane protein

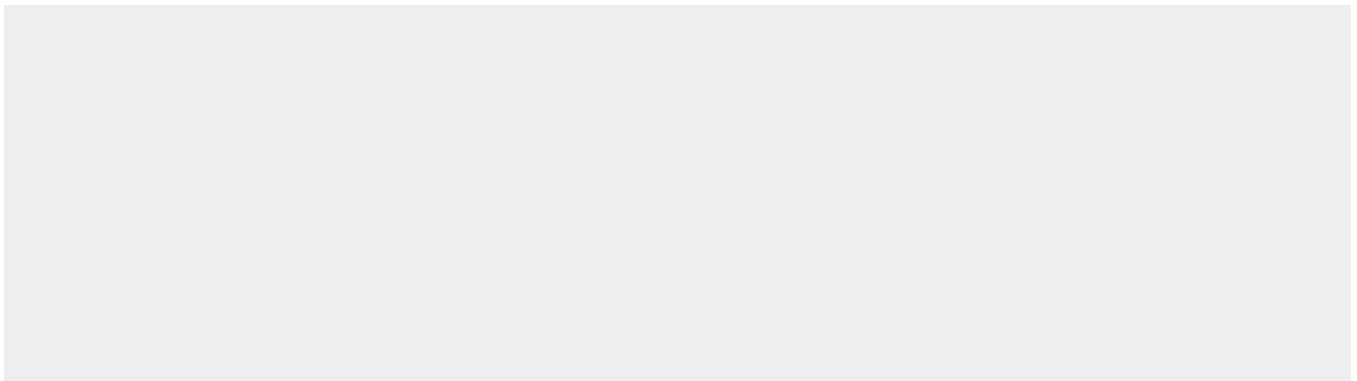
**Tissue Location**

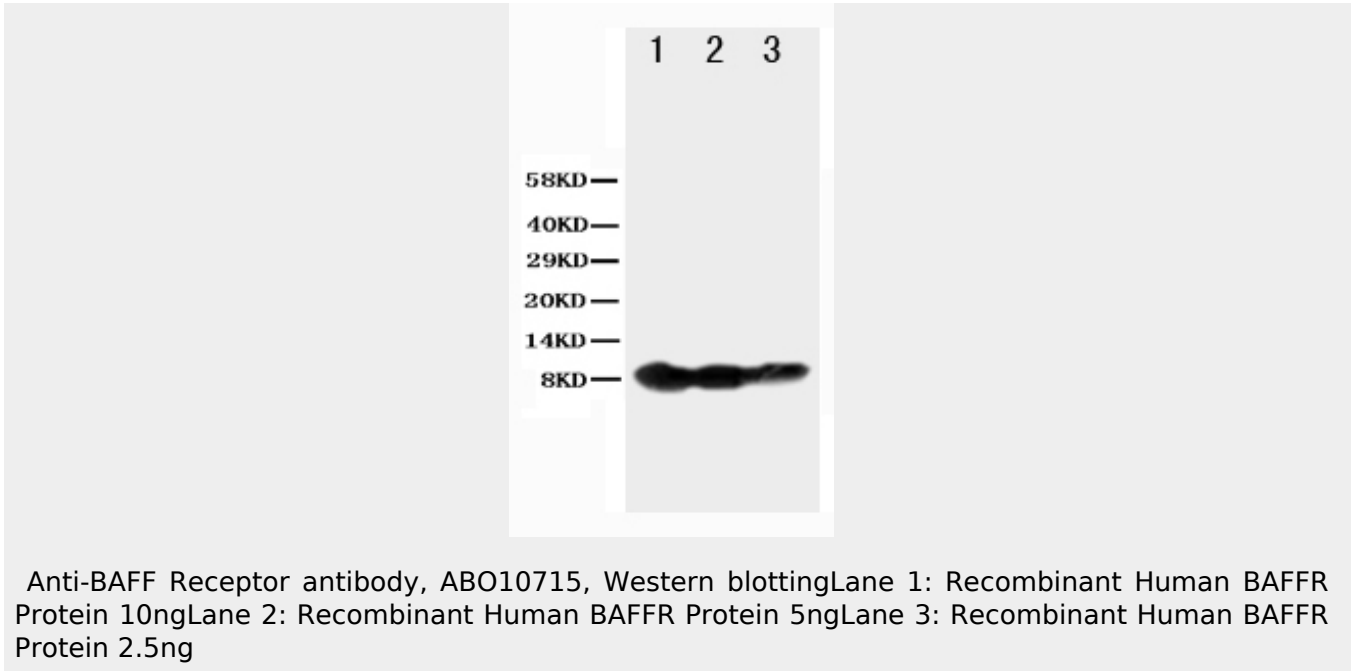
Highly expressed in spleen and lymph node, and in resting B-cells. Detected at lower levels in activated B-cells, resting CD4+ T-cells, in thymus and peripheral blood leukocytes

**Anti-TNFRSF13C/BAFFR Antibody - Protocols**

Provided below are standard protocols that you may find useful for product applications.

- [Western Blot](#)
- [Blocking Peptides](#)
- [Dot Blot](#)
- [Immunohistochemistry](#)
- [Immunofluorescence](#)
- [Immunoprecipitation](#)
- [Flow Cytometry](#)
- [Cell Culture](#)

**Anti-TNFRSF13C/BAFFR Antibody - Images**



#### **Anti-TNFRSF13C/BAFFR Antibody - Background**

Tumor necrosis factor receptor superfamily member 13C (TNFRSF13C), also known as BAFFR, is a protein in humans encoded by the TNFRSF13C gene. The BAFFR gene is mapped to chromosome 22q13.1-q13.31. It has got 184 amino acid transmembrane protein which is 56% identical to the mouse protein. B cell-activating factor (BAFF) enhances B-cell survival in vitro and is a regulator of the peripheral B-cell population. BAFF plays a crucial role in B cell development and can function through receptors other than BCMA.