

**Anti-ApolipoProtein D Antibody**  
Catalog # ABO10712**Specification**

---

**Anti-ApolipoProtein D Antibody - Product Information**

Application	<b>WB</b>
Primary Accession	<a href="#">P05090</a>
Host	<b>Rabbit</b>
Reactivity	<b>Human</b>
Clonality	<b>Polyclonal</b>
Format	<b>Lyophilized</b>

**Description**

Rabbit IgG polyclonal antibody for Apolipoprotein D(APOD) detection. Tested with WB in Human.

**Reconstitution**

Add 0.2ml of distilled water will yield a concentration of 500ug/ml.

**Anti-ApolipoProtein D Antibody - Additional Information**

**Gene ID** 347

**Other Names**

Apolipoprotein D, Apo-D, ApoD, APOD

**Calculated MW**

21276 MW KDa

**Application Details**

Western blot, 0.1-0.5 µg/ml, Human<br>

**Subcellular Localization**

Secreted.

**Tissue Specificity**

Expressed in liver, intestine, pancreas, kidney, placenta, adrenal, spleen, fetal brain tissue and tears.

**Protein Name**

Apolipoprotein D(Apo-D/ApoD)

**Contents**

Each vial contains 5mg BSA, 0.9mg NaCl, 0.2mg Na<sub>2</sub>HPO<sub>4</sub>, 0.05mg Thimerosal, 0.05mg NaN<sub>3</sub>.

**Immunogen**

A synthetic peptide corresponding to a sequence at the C-terminus of human Apolipoprotein D(172-189aa IDVKKMTVTDQVNCPLS).

**Purification**

Immunogen affinity purified.

### Cross Reactivity

No cross reactivity with other proteins

### Storage

**At -20°C for one year. After reconstitution, at 4°C for one month. It can also be aliquotted and stored frozen at -20°C for a longer time. Avoid repeated freezing and thawing.**

## Anti-Apolipoprotein D Antibody - Protein Information

**Name** APOD

### Function

APOD occurs in the macromolecular complex with lecithin- cholesterol acyltransferase. It is probably involved in the transport and binding of bilirubin. Appears to be able to transport a variety of ligands in a number of different contexts.

### Cellular Location

Secreted.

### Tissue Location

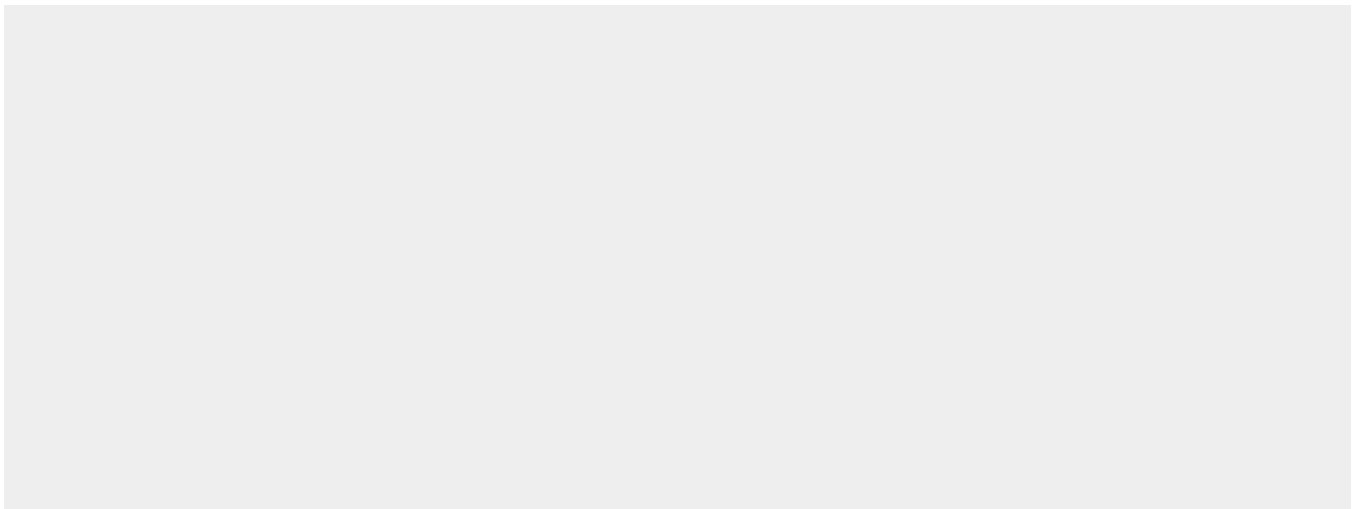
Expressed in liver, intestine, pancreas, kidney, placenta, adrenal, spleen, fetal brain tissue and tears

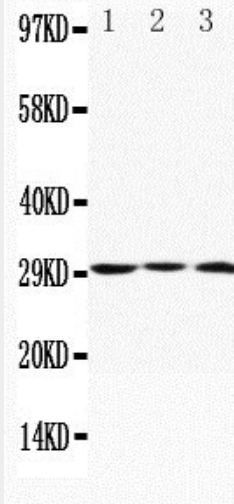
## Anti-Apolipoprotein D Antibody - Protocols

Provided below are standard protocols that you may find useful for product applications.

- [Western Blot](#)
- [Blocking Peptides](#)
- [Dot Blot](#)
- [Immunohistochemistry](#)
- [Immunofluorescence](#)
- [Immunoprecipitation](#)
- [Flow Cytometry](#)
- [Cell Culture](#)

## Anti-Apolipoprotein D Antibody - Images





Anti-Apolipoprotein D antibody, ABO10712, Western blotting Lane 1: MCF-7 Cell Lysate Lane 2: HELA Cell Lysate Lane 3: SMMC Cell Lysate

#### **Anti-ApolipoProtein D Antibody - Background**

Apolipoprotein D (Apo-D) is a protein that in humans, encoded by the APOD gene. Being a member of the alpha(2 mu)-microglobulin superfamily of carrier proteins, Apo-D is also known as lipocalin. The gene has been localized to the p14.2---qter region of human chromosome 3. It is a glycoprotein of estimated molecular weight 33,000 Da. The Apo-D encoded a protein of 169 amino acid residue. It has been detected in human liver, intestine, pancreas, kidney, placenta, adrenal, spleen, and fetal brain tissue. For its features, Apo-D has been a biomarker of androgen insensitivity syndrome (AIS).