

Anti-MMP10 Antibody
Catalog # ABO10706

Specification

Anti-MMP10 Antibody - Product Information

Application	WB
Primary Accession	P09238
Host	Rabbit
Reactivity	Human
Clonality	Polyclonal
Format	Lyophilized

Description

Rabbit IgG polyclonal antibody for Stromelysin-2(MMP10) detection. Tested with WB in Human.

Reconstitution

Add 0.2ml of distilled water will yield a concentration of 500ug/ml.

Anti-MMP10 Antibody - Additional Information

Gene ID 4319

Other Names

Stromelysin-2, SL-2, 3.4.24.22, Matrix metalloproteinase-10, MMP-10, Transin-2, MMP10, STMY2

Calculated MW

54151 MW KDa

Application Details

Western blot, 0.1-0.5 µg/ml, Human

Subcellular Localization

Secreted, extracellular space, extracellular matrix .

Protein Name

Stromelysin-2(SL-2)

Contents

Each vial contains 5mg BSA, 0.9mg NaCl, 0.2mg Na₂HPO₄, 0.05mg Thimerosal, 0.05mg NaN₃.

Immunogen

A synthetic peptide corresponding to a sequence at the C-terminus of human MMP10(410-422aa FDENSQSMEQGFP).

Purification

Immunogen affinity purified.

Cross Reactivity

No cross reactivity with other proteins

Storage

At -20°C for one year. After reconstitution, at 4°C for one month. It can also be aliquotted and stored frozen at -20°C for a longer time. Avoid repeated freezing and thawing.

Sequence Similarities

Belongs to the peptidase M10A family.

Anti-MMP10 Antibody - Protein Information

Name MMP10

Synonyms STMY2

Function

Can degrade fibronectin, gelatins of type I, III, IV, and V; weakly collagens III, IV, and V. Activates procollagenase.

Cellular Location

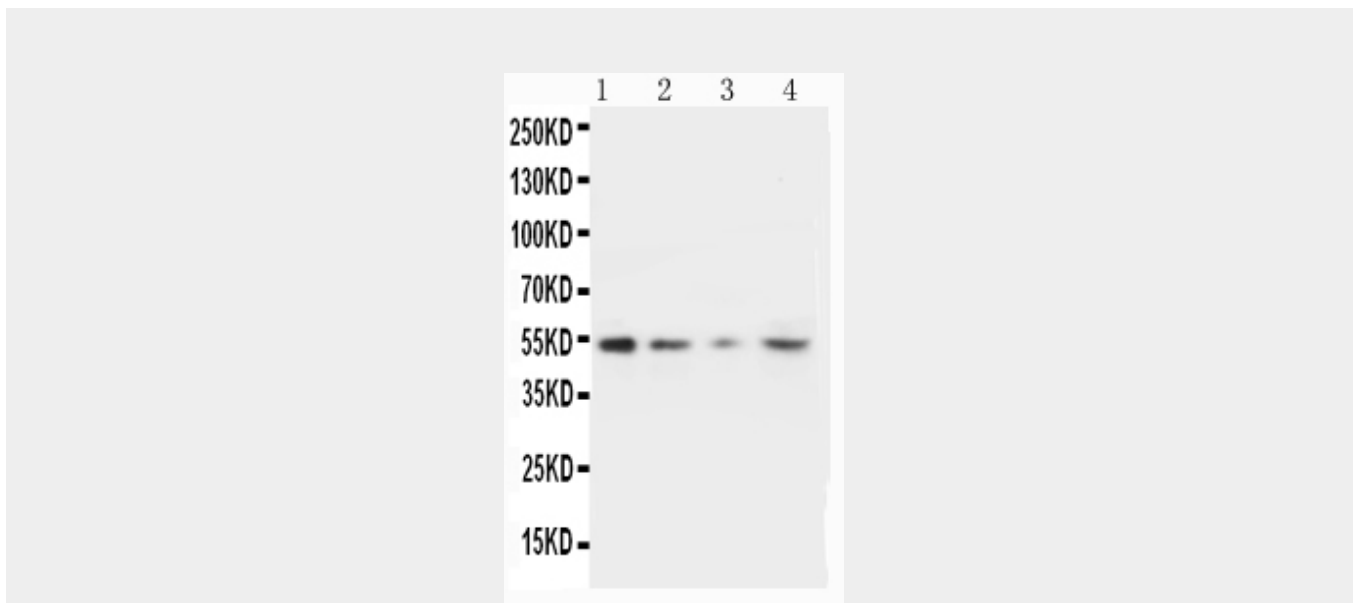
Secreted, extracellular space, extracellular matrix

Anti-MMP10 Antibody - Protocols

Provided below are standard protocols that you may find useful for product applications.

- [Western Blot](#)
- [Blocking Peptides](#)
- [Dot Blot](#)
- [Immunohistochemistry](#)
- [Immunofluorescence](#)
- [Immunoprecipitation](#)
- [Flow Cytometry](#)
- [Cell Culture](#)

Anti-MMP10 Antibody - Images



Anti-MMP10 antibody, ABO10706, Western blotting
Lane 1: Recombinant Human MMP-10 Protein 10ng
Lane 2: Recombinant Human MMP-10 Protein 5ng
Lane 3: Recombinant Human MMP-10 Protein 2.5ng
Lane 4: HELA Cell Lysate

Anti-MMP10 Antibody - Background

Stromelysin-2 also known as matrix metalloproteinase-10(MMP-10) or transin-2 is an enzyme that in humans is encoded by the MMP10 gene. Proteins of the matrix metalloproteinase(MMP) family are involved in the breakdown of extracellular matrix in normal physiological processes, such as embryonic development, reproduction, and tissue remodeling, as well as in disease processes, such as arthritis and metastasis. Most MMP's are secreted as inactive proproteins which are activated when cleaved by extracellular proteinases. The enzyme encoded by this gene degrades proteoglycans and fibronectin. The gene is part of a cluster of MMP genes which localize to chromosome 11q22.3.